



Government of the
Republic of Kosovo
Ministry of Environment and
Spatial Planning



Kosovo Environmental
Protection Agency

REPORT ON MUNICIPAL WASTE MANAGEMENT IN KOSOVO

REPORTING YEAR 2018



REPORT ON MUNICIPAL WASTE MANAGEMENT IN KOSOVO

REPORTING YEAR 2018

Report title: Report on Municipal Waste Management in Kosovo, Reporting Year 2018

Authors: Ministry of Environment and Spatial Planning - Kosovo Environmental Protection Agency, in cooperation with the Deutsche Gesellschaft für Internationale Zusammenarbeit (GIZ) GmbH on behalf of German Government.

Edition: Prishtinë/Pristina, August 2019

CONTENTS

CONTENTS.....	5
FIGURES AND TABLES.....	6
ABBREVIATIONS	7
1.0 INTRODUCTION	9
1.1 Purpose of the report.....	9
1.2 Data collection methodology	9
1.3 The scope of the report	10
2.0 WASTE MANAGEMENT SITUATION IN KOSOVO	11
2.1 Overview of current situation	11
2.2 Municipal waste disposal	11
2.3 Generation of municipal waste.....	12
3.0 STATUS OF MUNICIPAL SOLID WASTE MANAGEMENT	14
3.3.1 Waste service coverage rate	14
3.3.2 Fee collection	20
3.3.3 Illegal dumpsites	24
3.3.4 Recycling	28
3.3.5 Compliance with waste management legal and planning framework	28
3.3.6 Implementation of municipal waste management plans	30
3.3.7 Licensed waste management operators.....	30
3.3.8 Municipal waste management assets.....	32
4.0 FINDINGS.....	35
REFERENCES	36
ANNEXES	38

FIGURES AND TABLES

Table 1.	Quantity of collected and generated waste in Kosovo
Table 2.	Quantity of collected and generated waste in Kosovo
Table 3.	Overview of municipal waste collection and transportation service coverage in 2017 and 2018 in Kosovo
Table 4.	Overview of fee collection for waste collection and transportation service in 2017 and 2018
Table 5.	Illegal dumpsites by size in regions (2019)
Table 6.	Illegal dumpsites by type of waste in regions (2019)
Table 7.	Compliance with waste management legal and planning framework
Table 8.	Licensed waste management operators
Table 9.	Municipal waste management assets
Chart 1.	Municipal waste collection and transportation service coverage in regions (2017 and 2018)
Chart 2.	Illegal dumpsites by size (2019)
Chart 3.	Fee collection for municipal waste collection and transportation service in 2017 and 2018
Chart 4.	Fee collection for waste collection and transportation service in regions (2017 and 2018)
Chart 5.	Illegal dumpsites by size (2019)
Chart 6.	Illegal dumpsites by waste type (2019)
Map 1.	Municipal waste collection and transportation service coverage in Kosovo in 2017
Map 2.	Municipal waste collection and transportation service coverage in Kosovo in 2018
Map 3.	Illegal dumpsites - 2017 and 2019 data

ABBREVIATIONS

AI	Administrative Instruction
AKM	Association of Kosovo Municipalities
C&D	Construction and demolition
CW	Commercial Waste
GIZ	German Society for International Cooperation
KEPA	Kosovo Environmental Protection Agency
WL	Waste Law
LEP	Law on Environmental Protection
ME	Municipal Enterprise
MESP	Ministry of Environment and Spatial Planning
MWMP	Municipal Waste Management Plan
MW	Municipal waste
PAMKOS	Association of Kosovo Waste Enterprises
PRKWM	Plan of the Republic of Kosovo on Waste Management
RL	Regional landfill
RWC	Regional Waste Company
KAS	Kosovo Agency of Statistics
SRKWM	Strategy of the Republic of Kosovo on Waste Management
KLMC	Kosovo Landfill Management Company

1.0 INTRODUCTION

1.1 Purpose of the report

Law on Waste (2012) is the legal basis for waste management activities in Kosovo, and it also regulates the reporting and monitoring obligations of all the stakeholders in the sector. Kosovo Environmental Protection Agency – KEPA (Article 14, paragraph 1.8) is responsible for establishing waste management databases and information systems and is also responsible for drafting a national waste management report.

This report aims to provide comprehensive and reliable data on waste management as a summary of data received from the local level, providing for information required for policy development, monitoring the implementation of the national waste management strategy, evaluating municipal performance and promoting well-placed investments in improving the state of environment and health and economic benefits.

This report presents the current situation in terms of waste management, namely waste collection and transportation service coverage, fee collection, state of environmental pollution from illegal dumpsites, accumulated and generated amounts of waste, waste separation at source etc.

Finally, the report provides a summary of the findings for the reporting year of 2018, including the data obtained for 2017.

1.2 Data collection methodology

With the purpose of standardizing reporting by all the stakeholders, KEPA has developed waste management reporting forms for municipalities and companies licensed for waste collection and transportation and also provided support in the implementation through training within the legal timeline, by March 2019.

For the reporting year of 2019, KEPA intends to standardize reporting system for other stakeholders that are obliged to report on annual basis.

The report is based on the data reported by:

- Municipalities (submitted in digital form and hard copy, signed by the municipal officer responsible for reporting on waste management and the Mayor), and
- Waste collection and transportation operators (RWCS, MEs, etc.)
- Landfill management companies (KLMC, RWCs) etc.

The data on illegal landfills are based on a field research that was conducted by all the municipalities in the country in March 2019, and then these data were reported on KEPA standard forms.

The required documentation for data verification, collected from municipalities and their operators, in order to verify the reported figures on, inter alia, households served, fee collection, waste disposal,

access to infrastructure for separation at source etc. These documents are: financial statements, billing lists, reports on the amount of disposed waste etc.

The verification of reported data on illegal dumpsites was done through site visits in the selected locations.

The received data was reviewed by the MESP Working Group and, based on verification documents and reviews thereof, proposals were made for the KEPA waste management report. The findings were submitted to the municipalities for their final review, in order to avoid errors in the data reporting.

1.3 The scope of the report

The report covers non-hazardous solid waste produced in the Republic of Kosovo, including:

- Municipal waste (MW) from households;
- Commercial waste (CW) - that is waste from businesses, educational and governmental institutions;
- Construction and demolition waste (CDW), meaning waste from the activities of construction and demolition of residential, civil and commercial facilities;
- Bulky waste (MV), which means household and commercial waste.

The report excludes all hazardous waste including: fluids, medical waste and waste from primary production activities (agriculture, industry, mining and forestry).

2.0 WASTE MANAGEMENT SITUATION IN KOSOVO

2.1 Overview of current situation

Waste management in the Republic of Kosovo is regulated by Law No. 64/L-060 on Waste and other sublegal acts. Lack of a proper implementation of legal basis and lack of concrete steps towards integrated waste management taken by all the stakeholders involved in this area, the environmental situation in Kosovo will keep on aggravating and deteriorating.

The available data - which cover the entire waste lifecycle, from production to final treatment - indicate that there is little to no emphasis put on the treatment of the waste, therefore, to-date, most of the generated waste ends up in the landfill.

There are only very few initiatives at the local or regional level that show concrete action towards circular economy.

This reporting year has also been incomplete in terms of comprehensive data on all activities from all the stakeholders on waste generation, collection, treatment and disposal. Furthermore, the data shows that generation of municipal, medical and industrial waste has been increasing every year.

The situation of sanitary landfills in Kosovo continues to be dire because of many factors, mainly as a consequence of poor management. Also, the situation of industrial landfills inherited from mining and industrial activities, and active ones as well, is not good, and they are almost out of control.

2.2 Municipal waste disposal

The amount of waste disposed in sanitary landfills managed by the KLMC in 2018 is 299,960.04 tons/year (see table 1). The amount of waste disposed in other sanitary landfills managed by RWCs is about 117.357.22 tons/year. So, the amount of municipal waste disposed in sanitary landfills amounts to 417.317.26 tons/year.

With regard to the amount of waste disposed in other non-sanitary landfills, such as Istog/Istok (in Tuqep), 8287 tonnes of waste is disposed per year, whereas there is no available data for the other landfills in the northern part of Kosovo.

The available data indicate that the total amount of waste disposed in Kosovo is 425,589 tons/year.

Landfill/transfer station	Disposed waste (t/y)
Prishtinë/Pristina (Mirash) regional landfill	126,351.47
Gjilan/Gnjilane (Velekince) regional landfill	65,366.98
Podujeva/o municipal landfill	12,603.60
Prizren (Landovica) regional landfill	95,637.99
Transfer station in Ferizaj/Uroševac (included in report on Gjilan landfill)	
Subtotal in landfills managed by KLMC:	299,960.04
Mitrovicë/Mitrovica (Germova) regional landfill	62,109.22
Peja/Peć (Sferka) regional landfill	49,451.00
Podujeva/ Podujevo municipal landfill	5,797.00
Subtotal in landfills managed by KLMC:	117,357.22
Total amount of waste disposed in sanitary landfills:	417,317.26
Istog/Istok (Tuçep) landfill	8,272.00
Zveçan/Zvečan landfill*	
Zubin-Potok (Lluçkarekë/Lučka Reka) landfill*	
Leposaviq/Leposavić landfill*	
Total amount of waste disposed in non-sanitary landfills:	8,272.00
Total amount of waste disposed of:	425,589.26

* For this reporting year we do not have data on these landfills

Table 1. Amount of waste disposed in Kosovo in 2018

2.3 Generation of municipal waste

At the local level, no analysis has been conducted on the waste composition, which would provide data on the level of generated waste in different municipalities, enabling the segregation of differentiated data between rural and urban zones. The total amount of waste generated can only be calculated based on an average generation per capita.

Nonetheless, a calculation of the waste generation rate per capital (kg/day) can be conducted, based on the number of served households, which in the country level the average has been calculated to be 0.78 kg per capita/day.

Considering the number of 1,779,521 inhabitants in the country (as per 2011 census) and the annual amount of municipal waste per capita, which is approximately 0.78 kg/capita/day, the total amount of generated waste turns out to be approximately 506,629 tons/year.

	REGION	General and service data				Amount of collected waste (2018)		Waste generation (2018)	
		Number of inhabitants (KAS-2011)	Number of served inhabitants	Number of households (KAS-2011)	Number of served households (12/2018)	Collected mixed municipal waste (t/y)	out of which bulky (ton/year)	Waste generation per capita (kg/year)	Waste generation per capita (kg/day)
R1	PRISHTINË/ PRISTINA REGION	470.583	522.528	85.104	100.343	121,725.30	200.56	232.95	0.64
R2	MITROVICË/A REGION	200.118	172.744	34.616	30.380	58,446.73	202.00	338.34	0.93
R3	PEJA/PEĆ REGION	174.235	135.797	30.266	23.645	50,975.60		375.38	1.03
R4	PRIZREN REGION	387.828	323.439	60.651	50.499	93,469.50	5,214.64	288.99	0.79
R5	FERIZAJ/ UROŠEVAC REGION	178.746	103.927	29.516	17.213	28,540.00		274.62	0.75
R6	GJILAN/ GNJILANE REGION	185.632	114.066	33.877	21.321	33,909.69		297.28	0.81
R7	GJAKOVA/ ĐAKOVICA REGION	140.659	83.716	22.960	13.821	27,424.00		327.58	0.90
KOSOVO		1,737,801	1,456,217	296.990	257.222	414,490.82	5,617.20	284.64	0.78

Table 2. Quantity of collected and generated waste in Kosovo

3.0 STATUS OF MUNICIPAL SOLID WASTE MANAGEMENT

3.3.1 Waste service coverage rate

Overall service coverage rate by the end of 2018 in Kosovo is around 75.6%.

Seven municipalities have 100% coverage. The situation in the municipality of Prishtina is rather different and requires explanation. The number of households that are provided with the waste service (are billed) in the Municipality of Prishtinë/Prishtina is much higher than the existing number of households according to KAS census (2011). This is due to the fact that the municipality of Prishtina has taken over the fee collection from the operator and the service provision has been extended to the clients, for which the data has been taken from the property tax registry, but, nevertheless, presenting a big gap between these data and the 2011 census data.

The municipality of Fushë Kosovë/Kosovo Polje is another similar case, in which the KAS 2011 census does not reflect the real situation, given the significant increase in the number of population over the last decade. Hence, the number of households is much higher than in the 2011 census data.

It should also be made clear that in some municipalities (Suhareka/Suva Reka, Rahovec/Orahovac, Kaçanik/Kaçanik, Podujeva/ etc.) the service is provided by private companies that are licensed for waste collection, but are not contracted based on public procurement procedures, therefore, the (billing) data coming from these companies were not used for the calculation.

During this reporting year, municipalities have been requested to submit service coverage data for 2017. Based on the data received from 33 municipalities, the overall service coverage rate at the end of 2017 in Kosovo was around 70.9%. This shows that in comparison to 2018, there was an increase in the coverage rate by 5.3 (points) % at country level.

Municipalities have also reported on service coverage for other clients, businesses and institutions. It should also be emphasized that many municipalities have not yet been able to make a separation of data on active businesses from their overall database, so the current number of businesses is related to all businesses registered within the territory, meaning that service coverage rate might be much lower than reported. Service coverage rate for businesses at the end of 2018 was 64.2%, whereas for institutions was 100%. Detailed data is presented in the Annex, table 2.

The following definition of waste collection service coverage is used for the calculation:

$$CR = \frac{\text{N.o.s.h.}}{\text{N.o.s.h.}} \times 100 (\%)$$

* CR - Coverage rate

* N.o.s.h. – Number of served/billed households in
December 2017/2018

T.n.o.h. - Total number of households according to the KAS Census 2011

	REGION	General data				Waste collection service coverage			
		Number of inhabitants (KAS-2011)	Number of households (KAS-2011)	Number of active businesses in the municipality 2018	Number of institutions in the family 2018	Number of households receiving service (2017)	Number of households receiving service (2018)	Number of businesses receiving service (2018)	Number of institutions receiving service (2018)
R1	PRISHTINË/ PRISTINA REGION	470,583.00	85,104.00	21.592	453	75.406	100.343	14.547	395
R2	MITROVICË/A REGION	192,637.00	32,721.00	2.753	178	21.035	28.725	2.667	155
R3	PEJA/PEĆ REGION	174,235.00	30,266.00	5.328	264	23.569	23.645	3.563	258
R4	PRIZREN REGION	387,828.00	60,651.00	7.145	450	48.996	50.499	6.465	442
R5	FERIZAJ/ UROŠEVAC REGION	178,746.00	29,516.00	595	95	16.490	17.213	272	90
R6	GJILAN/ GNJILANE REGION	178,903.00	32,428.00	7.201	126	17.332	19.690	1.719	263
R7	GJAKOVA/ ĐAKOVICA REGION	140,659.00	22,960.00	1.455	41	12.967	13.821	350	41
KOSOVO		1,723,591.00	293,646.00	46.069	1.607	215.795	253.936	29.583	1.644

	REGION	Waste collection service coverage rate				
		Service coverage rate for households (2017)	Service coverage rate for households (2018)	Service coverage rate increase or decrease for households for 2017 - 2018 (% points)	Service coverage rate for businesses (2018)	Service coverage rate for institutions (2018)
R1	PRISHTINË/PRISTINA REGION	79.7%	80.4%	0.7%	67.4%	87.2%
R2	MITROVICË/A REGION	58.2%	82.7%	24.5%	96.9%	87.1%
R3	PEJA/PEĆ REGION	77.9%	78.1%	0.3%	66.9%	97.7%
R4	PRIZREN REGION	80.8%	83.3%	2.5%	90.5%	98.2%
R5	FERIZAJ/UROŠEVAC REGION	55.9%	58.3%	2.4%	45.7%	94.7%
R6	GJILAN/GNJILANE REGION	53.4%	60.7%	7.3%	23.9%	100.0%
R7	GJAKOVA/ĐAKOVICA REGION	56.5%	60.2%	3.7%	24.1%	100.0%
KOSOVO		70.9%	75.6%	5.4%	64.2%	100.0%

Table 3. Overview of municipal waste collection and transportation coverage in 2017 and 2018 in Kosovo

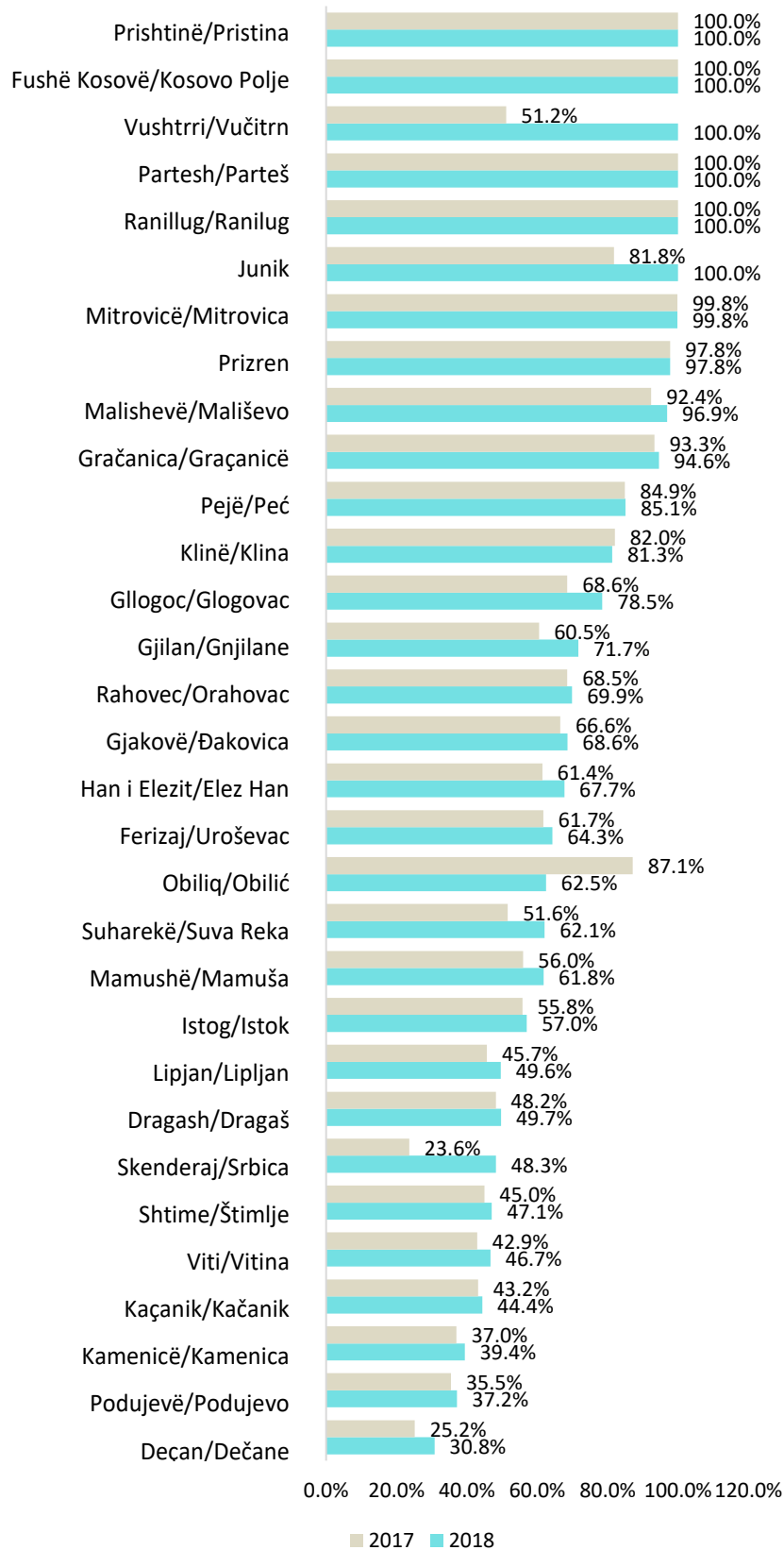
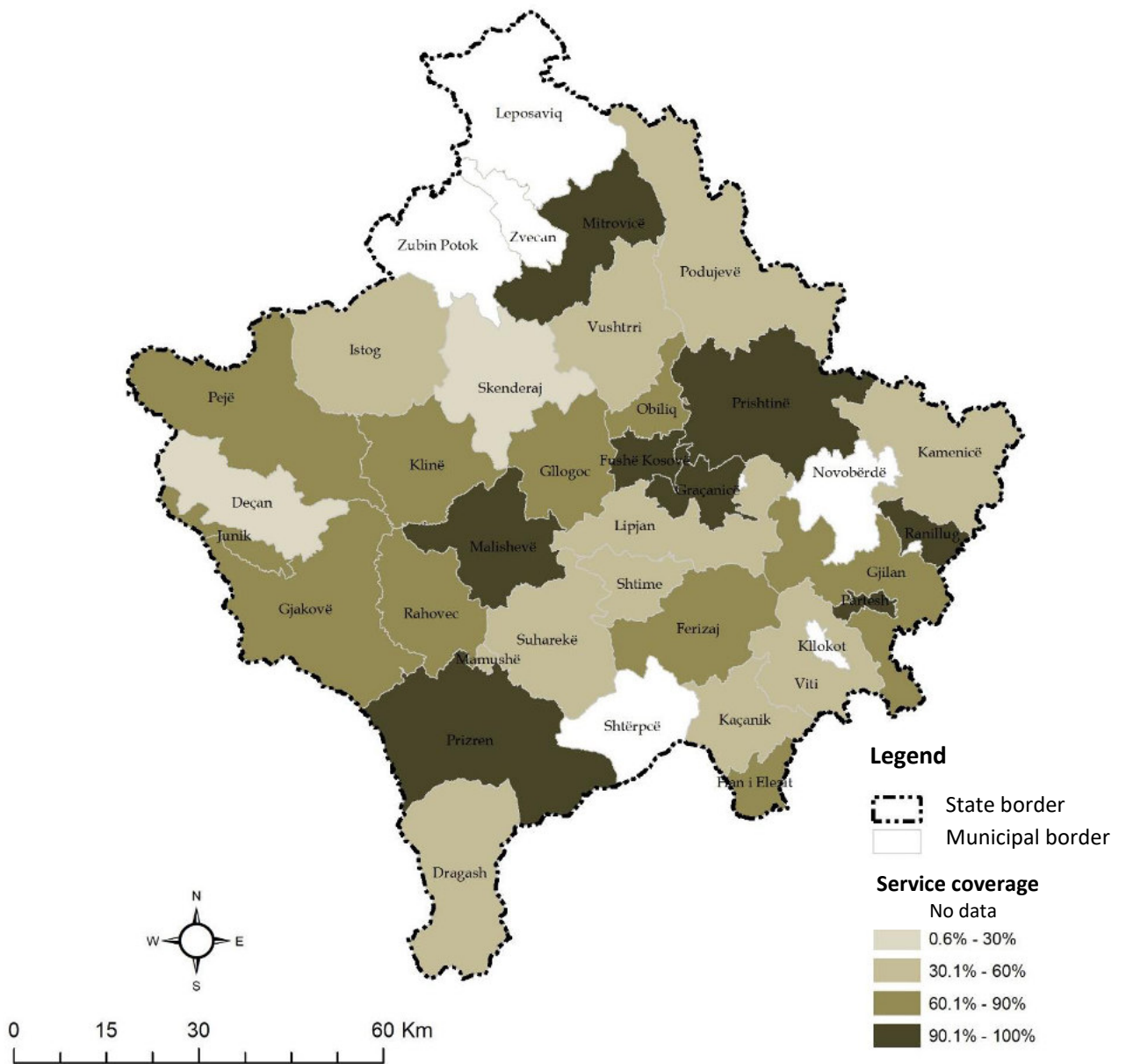
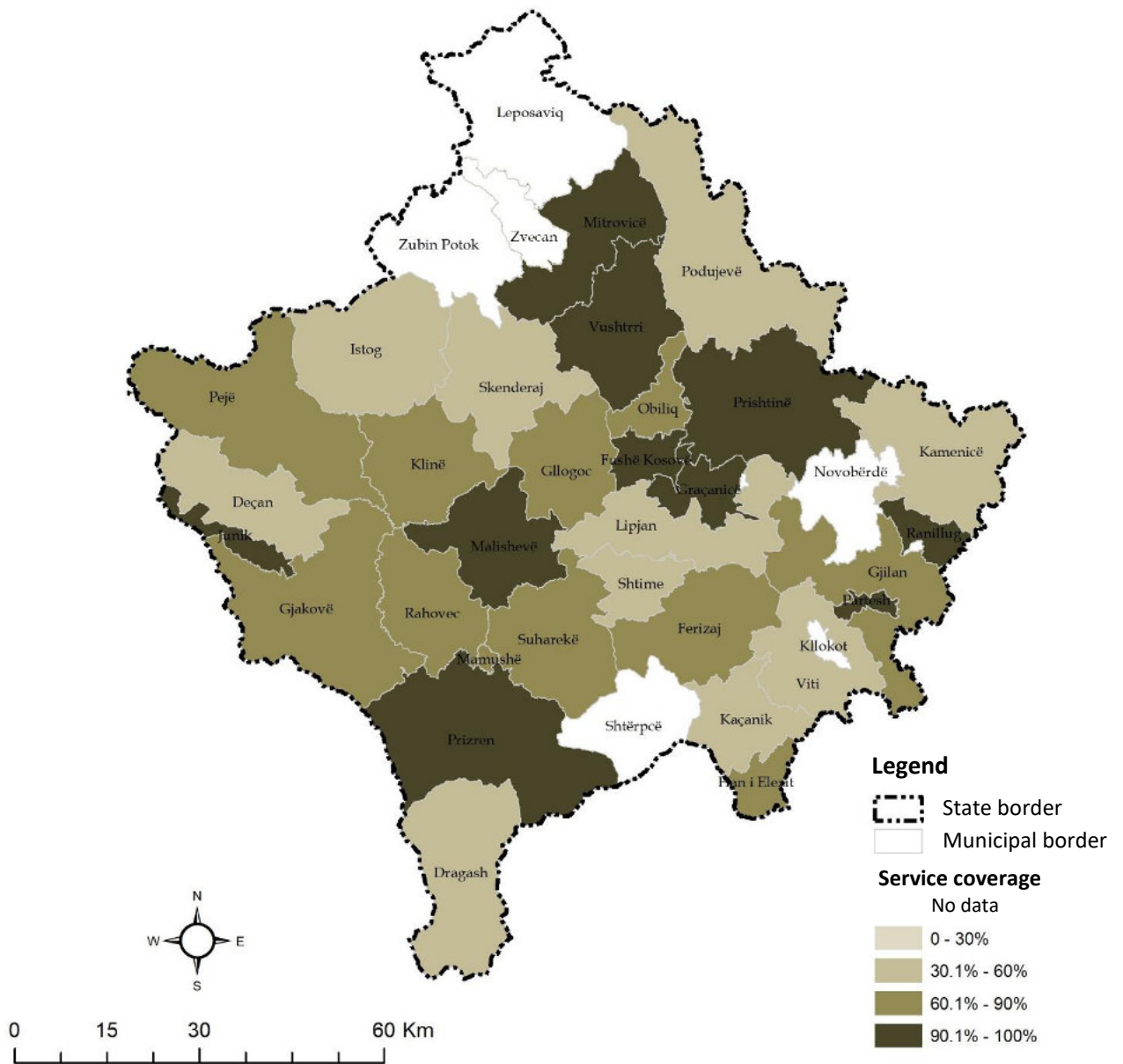


Chart 1. Municipal waste collection and transportation service coverage in municipalities (2017 and 2018)



Map 1. Municipal waste collection and transportation service coverage in Kosovo in 2017



Map 2. Municipal waste collection and transportation service coverage in Kosovo in 2018

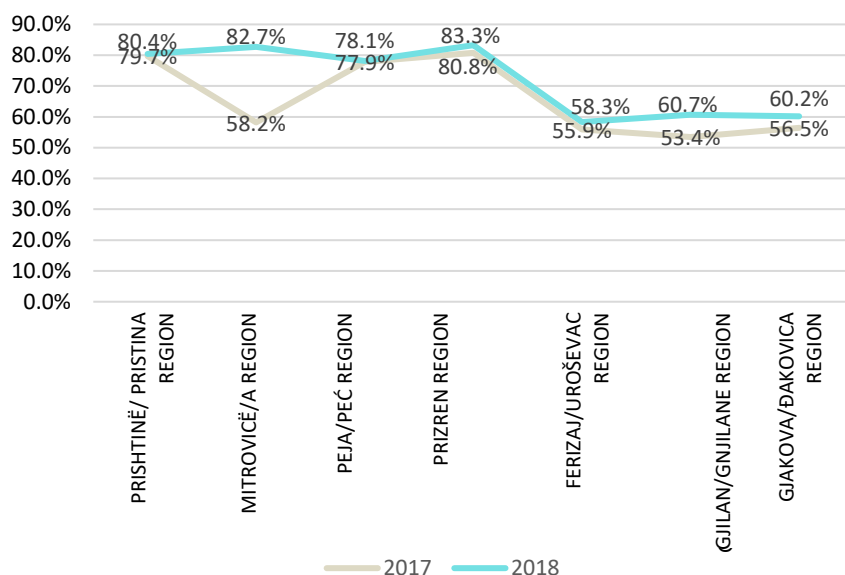


Chart 2. Municipal waste collection and transportation service coverage in regions (2017 and 2018)

3.3.2 Fee collection

The fee collection rate for waste collection and transportation service in Kosovo at the end of 2018 was 75.37%, whereas in the previous year it was 80.64%, which indicates a 5.27% decrease in fee collection. However, given that none of the operators can distinguish fees collected from the amount invoiced for the respective year and the fees collected from the amounts invoiced during previous years (old debts), it should be understood that the actual fee collection rate is lower than the one deriving from the formula and that the decline does not necessarily reflect a decrease in the collection of invoices for the given year.

It is ascertained that the current fee collection rate is 15-20% lower than the one derived from the formula.

Therefore, the actual fee collection rate in the country averages around 60%.

From the data reported in 2018, 11 municipalities have reached over 90% coverage rate.

Gjiilan/Gnjilane region has the highest fee collection rate (89.1%), whereas Peja/Peć region has the lowest (67.9%).

The data on fee collection rate were calculated using the following formula:

$$F_{cr} = \frac{a.i.i.y.}{a.i.c.} \times 100 (\%)$$

* F_{cr} - Fee collection rate

* $a.i.i.y.$ - Amount of invoices issued per year

* $a.i.c.$ - Amount of invoices collected in the respective year

It should be explained that in the municipalities that have taken over the fee collection and expanded the client lists, based on the property tax list, their situation with regard to fee collection might have changed due to the change in the operator model, in which case they have increased the number of issued invoices, results in the appearance that the fee collection has been decreased.

For detailed information see tables 3 and 4 in the Annex.

	REGION	Billing for waste collection service in 2018 (€)				
		Billing for household service (2018)	Billing for business service (2018)	Billing for institution service (2018)	Billing for contracted service (2018)	Billing for service for all categories (2018)
R1	PRISHTINË/PRISTINA REGION	€ 5,527,737.89	€ 734,513.00	€ 279,986.00	€ 1,348,983.83	€ 7,891,220.72
R2	MITROVICË/A REGION	€ 1,149,160.84	€ 319,168.00	€ 168,878.00	€ 376,734.75	€ 2,013,941.59
R3	PEJA/PEĆ REGION	€ 1,344,416.62	€ 443,938.00	€ 250,571.00	€ 41,326.00	€ 2,080,251.62
R4	PRIZREN REGION	€ 2,751,113.97	€ 672,817.00	€ 293,552.00	€ 415,702.11	€ 4,133,185.08
R5	FERIZAJ/UROŠEVAC REGION	€ 993,743.00	€ 360,886.00	€ 560,028.00	€ 223,883.65	€ 2,138,540.65
R6	GJILAN/GNJILANE REGION	€ 1,052,601.00	€ 235,475.00	€ 123,521.00	€ 0.00	€ 1,411,597.00
R7	GJAKOVA/ĐAKOVICA REGION	€ 661,373.00	€ 180,803.00	€ 163,726.00	€ 153,562.36	€ 1,159,464.36
KOSOVO		€ 13,480,146.32	€ 2,947,600.00	€ 1,840,262.00	€ 2,560,192.70	€ 20,828,201.02

	REGION	Fee collection for waste collection service in 2018 (€)				
		Fee collection for household service (2018)	Fee collection for business service (2018)	Fee collection for institution service (2018)	Fee collection for contracted service (2018)	Fee collection for all categories (2018)
R1	PRISHTINË/PRISTINA REGION	€ 2,922,645.50	€ 578,947.00	€ 212,072.00	€ 1,340,781.72	€ 5,054,446.22
R2	MITROVICË/A REGION	€ 708,200.00	€ 236,198.00	€ 151,168.00	€ 376,734.75	€ 1,472,300.75
R3	PEJA/PEĆ REGION	€ 1,081,538.05	€ 379,877.00	€ 243,047.00	€ 38,219.00	€ 1,742,681.05

R4	PRIZREN REGION	€ 2,043,556.74	€ 558,110.00	€ 281,707.00	€ 448,183.24	€ 3,331,556.98
R5	FERIZAJ/UROŠEVAC REGION	€ 837,604.00	€ 424,617.00	€ 566,936.00	€ 189,276.19	€ 2,018,433.19
R6	GJILAN/GNJILANE REGION	€ 922,397.00	€ 239,681.00	€ 120,350.00	€ 0.00	€ 1,282,428.00
R7	GJAKOVA/ĐAKOVICA REGION	€ 588,450.00	€ 165,179.00	€ 164,236.00	€ 162,900.27	€ 1,080,765.27
KOSOVO		€ 9,104,391.29	€ 2,582,609.00	€ 1,739,516.00	€ 2,556,095.17	€ 15,982,611.46

		Fee collection rate for waste collection service in 2018 (%)				
	REGION	Fee collection rate for household service (2018)	Fee collection rate for business service (2018)	Fee collection rate for institution service (2018)	Fee collection rate for contracted service (2018)	Fee collection rate for service for all categories (2018)
R1	PRISHTINĚ/PRISTINA REGION	52.87%	78.82%	75.74%	99.39%	64.05%
R2	MITROVICĚ/A REGION	61.63%	74.00%	89.51%	100.00%	73.11%
R3	PEJA/PEĆ REGION	80.45%	85.57%	97.00%	92.48%	83.77%
R4	PRIZREN REGION	74.28%	82.95%	95.96%	107.81%	80.61%
R5	FERIZAJ/UROŠEVAC REGION	84.29%	117.66%	101.23%	84.54%	94.38%
R6	GJILAN/GNJILANE REGION	87.63%	101.79%	97.43%		90.85%
R7	GJAKOVA/ĐAKOVICA REGION	88.97%	91.36%	100.31%	106.08%	93.21%
KOSOVO		67.54%	87.62%	94.53%	99.84%	76.74%

Table 4. Overview of fee collection for waste collection and transportation service in 2017 and 2018

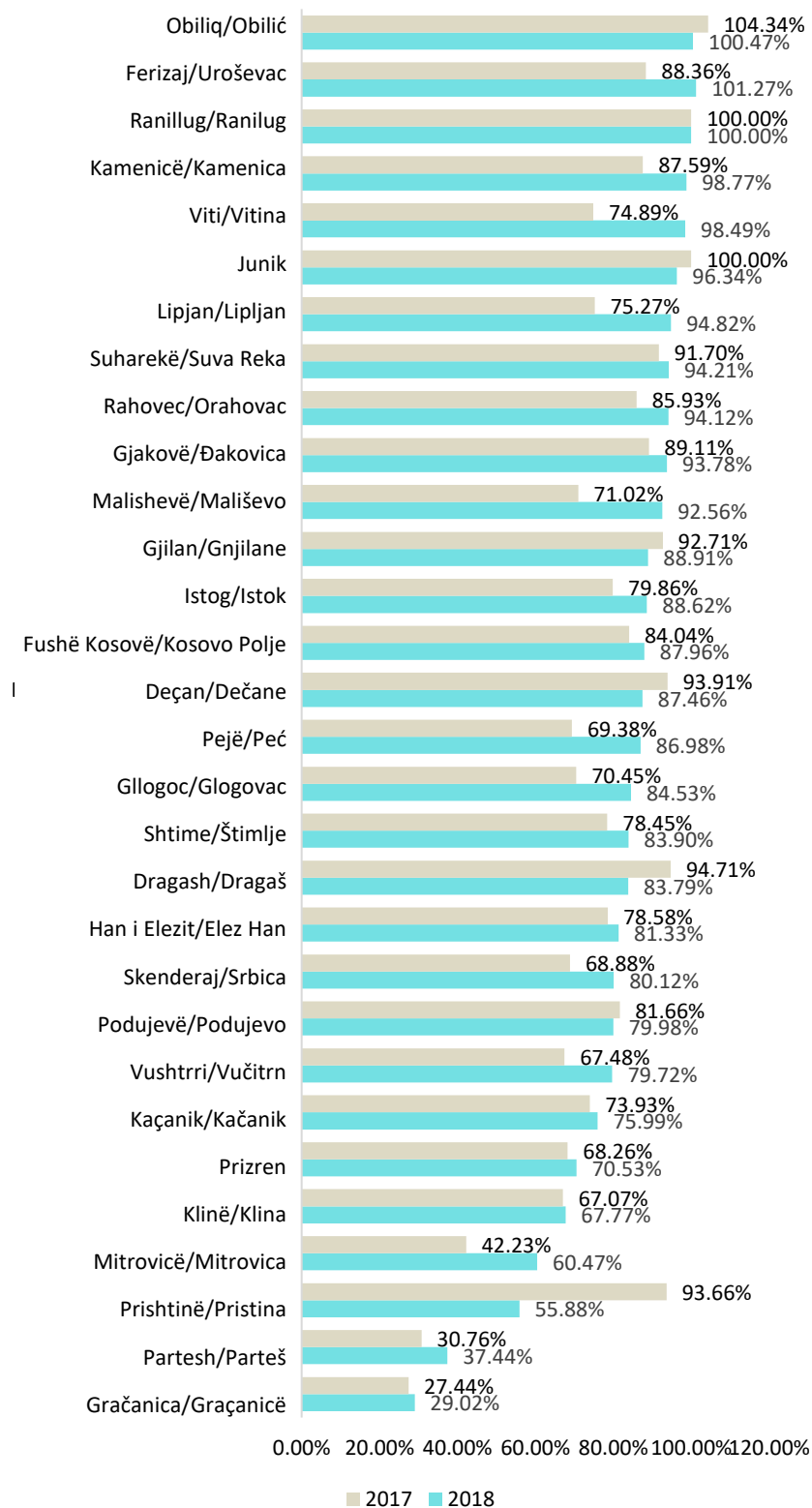


Chart 3. Fee collection for municipal waste collection and transportation service in 2017 and 2018

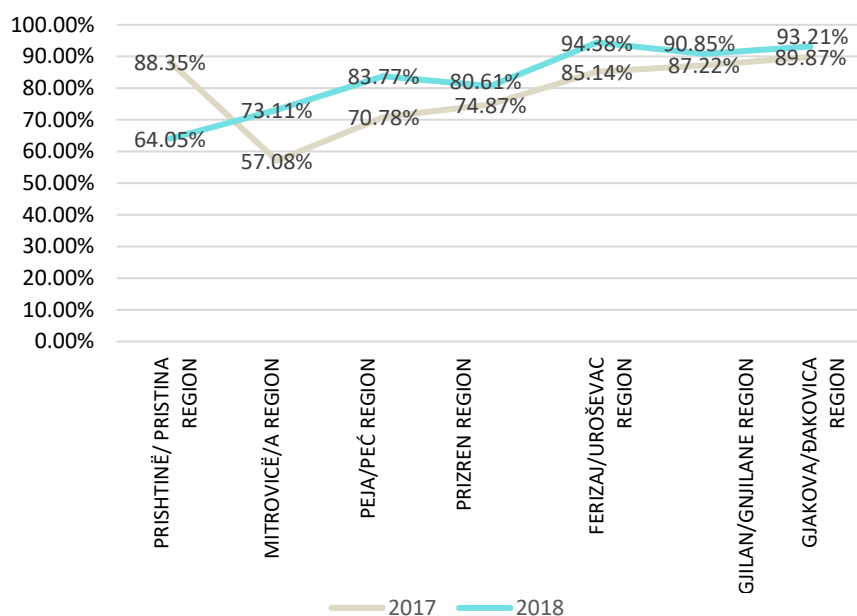


Chart 4. Fee collection for municipal waste collection and transportation service in regions (2017 and 2018)

3.3.3 Illegal dumpsites

In March 2019, all municipalities in Kosovo have conducted the activity of identifying illegal dumpsites in their territories. All the illegal dumpsites that were identified were classified by size and type of waste, into three categories: large, medium and small, based on their estimated volume. They were also categorized by type of waste, into: (a) household waste landfills; (b) construction and demolition waste landfills; (c) hazardous waste landfills; (d) bulky waste landfills; and (e) other waste landfills.

A total of 2529 illegal dumpsites of different sizes were identified in 38 municipalities, with construction and demolition waste landfills being the largest number. From this activity, it has been ascertained that there has been an increase in the illegal landfills (957) countrywide since 2017, when 1572 landfills had been identified. Based on data from all municipalities in Kosovo, majority of landfills are large landfills (39%) and the dominant type of waste in the landfills is municipal waste (46%) and construction and demolition waste.

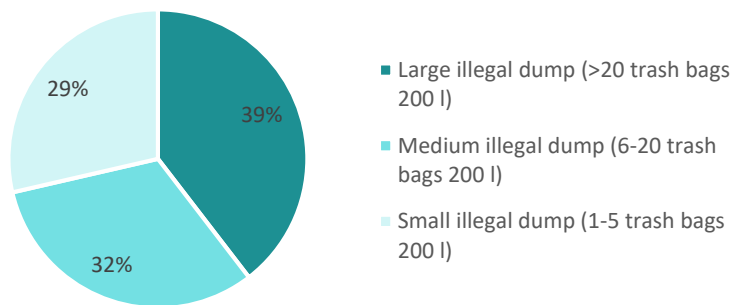


Chart 5. *Illegal dumpsites by size (2019)*

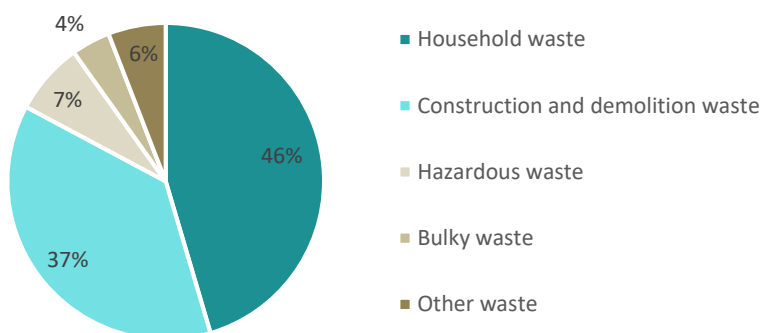


Chart 3. *Illegal dumpsites by type of waste (2019)*

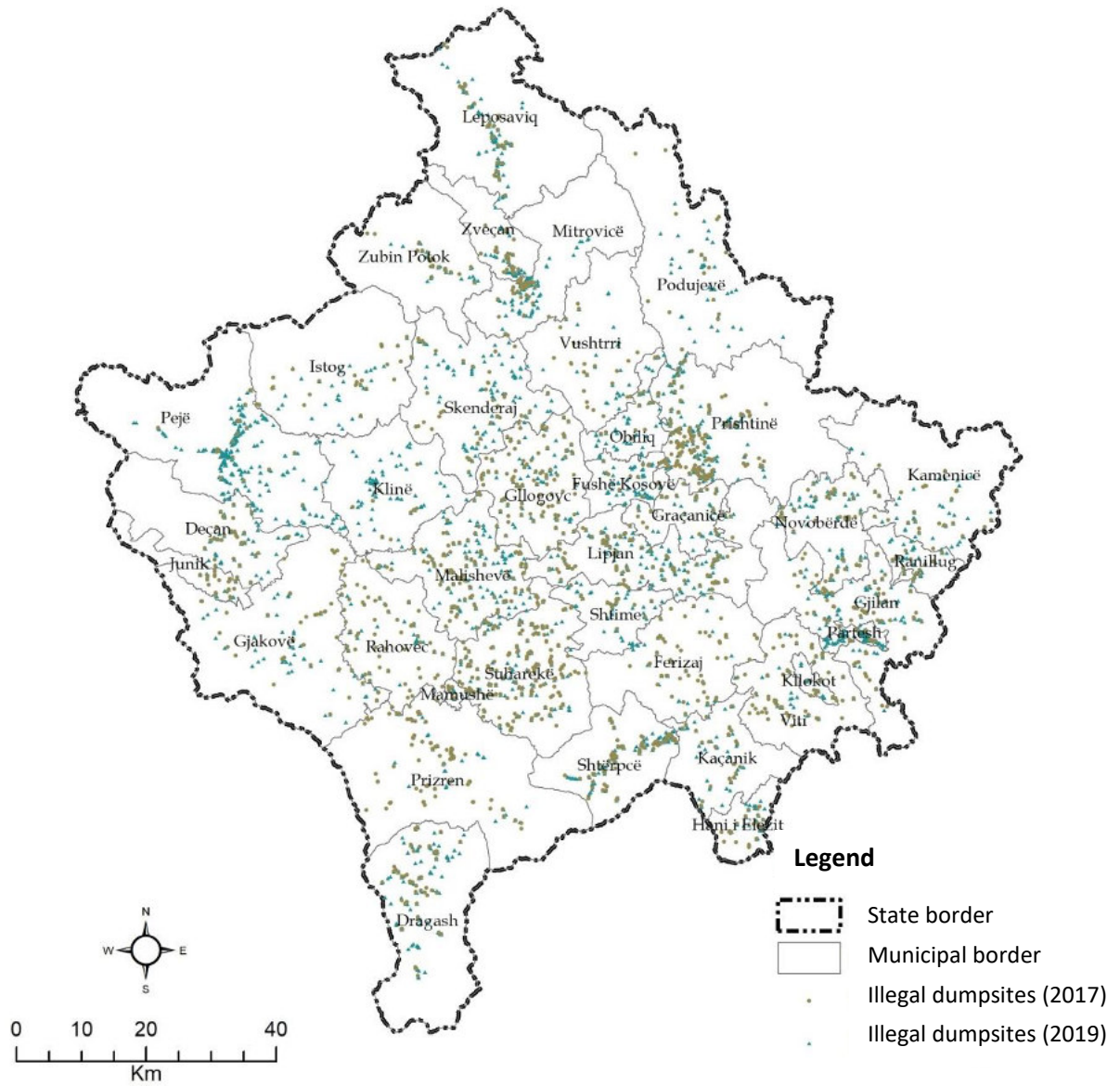
Based on the field verification process in the 33 municipalities that reported to KEPA, in June 2019, the total number of illegal dumpsites in these municipalities is 2246. If we compare the data on the number of landfills with the municipal territories, more landfills per km² have been identified in the municipalities of: Prishtinë/Pristina (0.27), Peja/Peć (0.25), Gjilan/Gnjilane (0.26) and Prizren (0.220), whereas municipalities with smaller number of landfills per km² in their territory are Mitrovica (0.10), Ferizaj/Uroševac (0.15) and Gjakova/Đakovica (0.12). For detailed information see the Annex, tables 5 and 6.

	REGION	Illegal dumpsites by size			Total illegal dumpsites
		Small dumpsites (1-5 bags of 200 l)	Medium dumpsites (6-20 lb 200 lb)	Large dumpsites (> 20 lb 200 lb)	
R1	PRISHTINË/PRISTINA REGION	173	206	203	582
R2	MITROVICË/A REGION	74	69	78	221
R3	PEJA/PEĆ REGION	149	108	85	342
R4	PRIZREN REGION	76	124	248	448
R5	FERIZAJ/UROŠEVAC REGION	21	33	104	158
R6	GJILAN/GNJILANE REGION	110	118	149	377
R7	GJAKOVA/ĐAKOVICA REGION	19	34	65	118
KOSOVO		622	692	932	2246

Table 5. Illegal dumpsites by size in regions (2019)

	REGION	Illegal dumpsites by fraction				
		Municipal waste	Construction and demolition waste	Industrial and hazardous waste	Bulky waste	Other waste
R1	PRISHTINË/PRISTINA REGION	53.1%	38.5%	6.1%	0.7%	1.6%
R2	MITROVICË/A REGION	52.7%	29.8%	6.7%	10.3%	0.6%
R3	PEJA/PEĆ REGION	39.1%	50.7%	3.6%	2.3%	4.2%
R4	PRIZREN REGION	26.7%	20.7%	12.5%	2.4%	37.7%
R5	FERIZAJ/UROŠEVAC REGION	45.8%	42.8%	6.6%	4.6%	0.2%
R6	GJILAN/GNJILANE REGION	50.3%	37.7%	4.9%	1.7%	5.5%
R7	GJAKOVA/ĐAKOVICA REGION	35.2%	52.3%	4.3%	7.9%	0.3%
KOSOVO		44.6%	38.5%	7.1%	3.7%	6.1%

Table 6. Illegal dumpsites by type of waste in regions (2019)



Map 3: Illegal dumpsites - 2017 and 2019 data

3.3.4 Recycling

In this reporting year, there has been no complete data submission with regard to waste separation at source and on-site recycling.

Municipalities were requested to report on the number of households with access to infrastructure for waste separation at source, including all households within 250 meters from a waste collection point offering separation of recyclable waste, households that were equipped with composters and households within a 5 km radius of a separated waste collection facility (if there are such facilities in the municipality).

Out of 33 municipalities that have reported on waste management in 2018, only 6 municipalities have reported to have access to infrastructure for separation at source. The municipalities have taken the following steps towards circular economy: Prizren, Prishtinë/Pristina, Fushë Kosovë/Kosovo Polje, Glllogoc/Glogovac, Mitrovica and Vushtrri/Vučitrn.

In all the municipalities, the data reported were supported with planning documents, and in the future, it is recommended that the verification documents be more related to implementation, clearly indicating the reported value, rather than planning documents;

It is also evident that that in Fushë Kosovë/ Kosovo Polje, most of the households have access to infrastructure for separation at source, however, due to the issues with current number of residents with the number registered in the 2011 census, in which case the current number is much higher, the real status is difficult to present.

Overall, based on reported data, it is ascertained that 6.8% of households have access to the infrastructure for separation at source at country level. Nonetheless, this percentage might not be realistic due to the reasons mentioned above. For detailed information see Annex, table 7.

3.3.5 Compliance with waste management legal and planning framework

Legal framework, including the Law on Waste and other sublegal acts, defines the duties and responsibilities of municipalities for waste management within their territory. Planning documents at the central level also provide a framework for development at local and regional levels and adopt measures aimed at accomplishing the set goals and objectives.

Some of these duties are of a crucial importance to enabling the municipalities to implement the law and the plans in the field of waste management, such as:

1. Drafting and adoption of Municipal Waste Management Plan (MWMP),
2. Drafting and adoption of Regulation on Waste Management,
3. Employment of a full time Waste Management Officer, whose job description ensures that at least 50% of his/her responsibilities cover waste management,
4. Employment of an environmental inspector whose job description provides responsibilities in the field of waste management,
5. Contracting licensed operators for the collection and transportation of municipal waste, by implementing procurement procedures,
6. Contracting licensed operators for the collection and transportation of waste from construction and demolition of construction sites, by implementing procurement procedures,
7. Setting service fees by going through the fee process for the collection, transportation and disposal of municipal waste, by calculating service costs, profiling customers and setting service fees, and

8. Designation of a facility for the collection, treatment and disposal of waste from the construction and demolition of buildings.

Municipalities have reported on these processes and their implementation (until March 2019) on a questionnaire that has also outlined the requirements for the relevant documentation for verification. Based on these reports and the verification of these data later on, we have a overall picture of the implementation of processes in accordance with waste management legal and planning frameworks.

At Kosovo level, the average process implementation rate is 57.6%.

REGION		1. Drafting and adoption of MWMP	2. Drafting and adoption of Municipal Regulation on Waste Management	3. WM Officer	4. Environmental Inspector	5. Contracting licensed operators for collection and transportation of municipal waste	6. Contracting licensed operators for collection and transportation of CDW	7. Setting service fees by undergoing the fee process	8. Designation of a facility for the collection, treatment and disposal of CDW	Percentage of implemented processes
R1	PRISHTINË/PRISTINA REGION	100%	86%	100%	71%	100%	0%	100%	57%	77%
R2	MITROVICË/A REGION	100%	50%	50%	50%	50%	0%	50%	50%	50%
R3	PEJA/PEĆ REGION	100%	100%	100%	100%	100%	0%	67%	0%	71%
R4	PRIZREN REGION	60%	60%	80%	150%	110%	0%	0%	80%	68%
R5	FERIZAJ/UROŠEVAC REGION	100%	50%	67%	83%	83%	0%	0%	50%	54%
R6	GJILAN/GNJILANE REGION	50%	8%	8%	50%	8%	0%	0%	58%	23%
R7	GJAKOVA/ĐAKOVICA REGION	67%	100%	100%	100%	67%	0%	33%	100%	71%
KOSOVO - no. of municipalities that have implemented the process		26	20	23	26	23	0	13	21	19
KOSOVO - average process implementation rate		78.8%	60.6%	69.7%	78.8%	69.7%	0.0%	39.4%	63.6%	57.6%

Table 7. Compliance with waste management legal and planning framework

At regional level, Prishtinë/Pristina region has implemented most processes, 77% of processes implemented, while Gjiilan/Gnjilane region has implemented approximately 23% of the processes. One process that has not been implemented by municipalities is number 6, this due to the inability of municipalities to contract licensed companies to collect and transport waste from the construction and demolition of buildings. At this stage, there is no company in Kosovo that is licensed for this type of activity. However, some municipalities have taken steps to manage this waste stream by

contracting public companies, private construction companies or other companies operating in their territories.

Process no. 1 is ascertained to have been fulfilled and implemented the most by the municipalities (26 out of 33):. Drafting and adoption of MWMP and 4. Environmental Inspector.
For detailed information see table 8 in the Annex.

3.3.6 Implementation of municipal waste management plans

Out of 33 municipalities that have reported on waste management for 2018, 26 municipalities have municipal waste management plans valid for the reporting year, approved by the municipal assembly. Of these municipalities, the majority have reported on the implementation of the MWMP, by fulfilling the legal requirement of the Law on Waste (Article 58/2).

Some municipalities have reported correctly referring to the Action Plan under the MWMP, related activities, the relevant activity-related objective, the percentage of performance achieved and also explaining the reasons for not completing the activity.

In many cases the activities described in the report do not correspond to the activities planned in the MWMP.

Taking into consideration that this is the first year that municipalities report on implementation of the MWMP and in many cases the report was not completed in the required standard form, it is not possible to generate average percentages of MWMP implementation or other MWMP implementation analysis.

It is, therefore, recommended that in the coming years municipalities initially develop a feasible MWMP, in which planning of activities and resources (both human and financial) are in compliance with real possibilities available to the municipality. Implementation of the waste plan should also be monitored regularly by the municipal waste management officers.

3.3.7 Licensed waste management operators

All municipalities have reported on licensed waste management operators in their territories. For the reporting year 2018, data received from the municipalities is for licensed waste collection and transportation operators.

7 regional waste companies (RWCs) provide services in 7 regions and 26 municipalities.

In some municipalities, there are municipal companies that operate, such as (Dečan/Dečani, Zvečan/Zvečan and Hani i Elezit/Elez Han), whilst in the municipalities of Ranilug/Ranilug and Partesh/Parteš the service is provided by the municipality. A number of municipalities have also hired private companies, nonetheless, only Prizren, Mamusha/Mamuša and Junik have contracted companies in accordance to the public procurement procedures. The municipality of Peja/Peć has also provided information on two licensed waste treatment companies operating in its the territory.

Eventually, these data will be part of the country-wide operator register, and this register will be updated annually with new data from respective municipalities.

	Municipalities	Licensed waste collection and transportation operators operating in the municipality		Licensed private waste treatment operators operating in the municipality
		Public operators	Private operators	
1	Prishtinë/Pristina	RWC Pastrimi		
2	Glllogoc/Glogovac			
3	Fushë Kosovë/Kosovo Polje			
4	Graçanicë/Gračanica			
5	Lipjan/Lipljan			
6	Obiliq/Obilić			
7	Podujevë/Podujevo			Nature LLC*
8	Mitrovicë/Mitrovica	RWC Uniteti		
9	Skenderaj/Srbica			
10	Vushtrri/Vučitrn			
11	North Mitrovica/Mitrovicë			
12	Zvečan/Zveqan	KPK Zvecan		
13	Zubin Potok			
14	Leposavić/Leposaviq			
15	Peja/Peć	RWC Ambienti		Sh.PK "Eurosteel Reciklimi-Ed" LLC
16	Istog/Istok			
17	Klinë/Klina			
18	Prizren	RWC Ekoregjioni	Is Company LLC NSH Shërbimi	
19	Suharekë/Suva Reka ¹		Is Company LLC*	
20	Malishevë/Mališevo			
21	Rahovec/Orahovac		Eco-Drinia' LLC*	
22	Dragash/Dragaš			
23	Mamushë/Mamuša		I&S Company LLC	
24	Ferizaj/Uroševac	RWC Pastrimi		
25	Kaçanik/Kaçanik		NTSH Krasniqi*	
26	Shtime/Štimlje			
27	Han i Elezit/Elez Han	NPL Pastrimi JSC		
28	Shtërpcë/Štrpce			
29	Gjilan/Gnjilane	RWC Ekohigjiena		
30	Kamenicë/Kamenica			
31	Viti/Vitina			
32	Novobërdë/Novo Brdo			
33	Partesh/Parteš	Partesh/Parteš Municipality		
34	Kllokot/Klokot			
35	Ranillug/Ranilug	Ranillug/Ranilug Municipality		

36	Gjakova/Đakovica	RWC CABRATI		
37	Deçan/Dečani	NSHP Ujësjiellësi - Higjiëna		
38	Junik		VB. TOFAJ LLC	

- The municipality has not submitted the report to KEPA for the reporting year 2017/2018;
- * Private operators do not have a contract for the provision of waste collection and transportation services with the municipality in which provide the service.
- ¹ The Municipality of Suhareka/Suva Reka has also contracted OK Group Ltd Company for treatment of illegal dumpsites in the territory of the municipality.

Table 8. Licensed waste management operators

3.3.8 Municipal waste management assets

All the municipalities that have reported, have also registered their data on municipal assets for waste management. However, there has not been an entry on all the requested data nor the registry in the requested form. These data were requested from the local level in order to have a general overview on the number, distribution and production year of municipal waste management assets. Municipal assets are all equipment owned by the municipality or owned by a publicly owned enterprise (in which the municipality has ownership).

According to the reported data, 33 municipalities in Kosovo own 223 trucks for waste collection and transportation. Prizren Municipality has the largest number of collection and transportation machinery - a total of 25 trucks (in "Eco-Region" POE) are municipal assets, while a total of 37 trucks and 3 tractors (some of the trucks and tractors owned by private companies) provide the service of municipal waste collection and transportation. Municipalities: Gjakova/Đakovica, Peja/Peć, Rahovec/Orahovac, Suhareka/Suva Reka, Ferizaj/Uroševac, Prishtinë/Pristina, Lipjan/Lipljan, Podujeva/o, Vushtrri/Vučitrn and Mitrovica have 10-15 trucks, while the municipalities of: Junik, Mamusha/Mamuša, Novobërdë/Novo Brdo, Partesh/Parteš, Ranillug/Ranilug, Graçanica/Graçanica have one truck each as a municipal asset to provide the service.

The average production year of trucks is 13.6 years. Only municipalities: Malisheva/Mališevo, Mamusha/Mamuša, Prizren, Ferizaj/Uroševac, Partesh/Parteš, Ranillug/Ranilug, Obiliq/Obilić and Fushë Kosovë/Kosovo Polje have trucks with an average production year of under 10 years, while the municipalities of: Deçan/Dečani, Junik and Kamenica have trucks with an average production year of 20 years or more.

In 15 municipalities, a part of municipal assets used to provide waste collection and transportation services are tractors too, 31 in total. The average production year of these tractor is 18.5 years.

Other equipment that are municipal assets, such as containers, and their quantities and age, were also reported as per their capacity. 25 out of 33 municipalities have reported having 35695 containers of 120l, 13 out of 33 municipalities have reported having 15741 containers of 240l, 30 out of 33 municipalities have reported having 8044 containers of 1.1 m³, 17 out of 33 municipalities have reported having 349 containers of 7.1 m³, and 6 of 33 municipalities have reported having 21 transfer

containers for 15 m³, out of which only Prizren Municipality has 10. It is not possible to calculate the average age because of the way in which container age was reported.

	Municipalities	Municipal waste collection and transportation assets			
		Truck		Tractor	
		Number of trucks	Average age	Number of tractors	Average age
1	Prishtinë/Pristina	11	11.8	2	18.0
2	Glllogoc/Glogovac	9	10.8	2	17.0
3	Fushë Kosovë/Kosovo Polje	7	9.3		
4	Gračanicë/Gračanica	1	13.0		
5	Lipjan/Lipljan	10	16.1		
6	Obiliq/Obilić	3	8.7	1	18.0
7	Podujevë/Podujevo	15	15.3	2	13.5
8	Mitrovicë/Mitrovica	12	13.1		
9	Skenderaj/Srbica	7	14.6	2	18.0
10	Vushtrri/Vučitrn	12	18.8		
11	North Mitrovica/Mitrovicë				
12	Zvečan/Zveqan	2	11.0		
13	Zubin Potok				
14	Leposavić/Leposaviq				
15	Peja/Peć	12	18.7	2	19.0
16	Istog/Istok	4	16.2		
17	Klinë/Klina	4	17.3		
18	Prizren	25	6.0		
19	Suharekë/Suva Reka ¹	11	17.7	3	23.0
20	Malishevë/Mališevo	6	9.7	2	17.0
21	Rahovec/Orahovac	11	16.4	2	20.0
22	Dragash/Dragaš	6	14.0	3	
23	Mamushë/Mamuša	1	8.0	1	2.0
24	Ferizaj/Uroševac	10	8.2	1	14.0
25	Kaçanik/Kaçanik	2	12.0	3	28.0
26	Shtime/Štimlje	3	16.7		
27	Han i Elezit/Elez Han	2			
28	Shtërpcë/Štrpce				
29	Gjilan/Gnjilane	9	13.0	1	
30	Kamenicë/Kamenica	3	22.0	1	13.0
31	Viti/Vitina	3	16.3		
32	Novobërdë/Novo Brdo	1	12.0		
33	Partesh/Parteš	1	7.0		
34	Kllokot/Klokot				

35	Ranillug/Ranilug	1	9.0		
36	Gjakova/Đakovica	13	13.9	2	39.0
37	Deçan/Dečani	5	20.8	1	18.0
38	Junik	1	20.0		
KOSOVO total / average age:		223	13.7	31	18.5

The municipality has not submitted the report to KEPA for the reporting year of 2017/2018;

Table 9. Municipal waste management assets

4.0 FINDINGS

The main findings, summarized in the report, are as follows:

- Waste collection and transportation coverage has increased year by year, from 57.7% in 2016, to 70.9% in 2017 and 75.6% in 2018;
- The fee collection rate in Kosovo is difficult to estimate, given the inclusion of old debts in the value collected, but it is ascertained to be still low, around 60% and little improvement during the years. The total collected amount has increased by 14,649,334.05 € in 2017. € 15067.252.48 in 2018, but there has been a decrease in fee collection from households. Financial sustainability in the sector is still challenging;
- Illegal waste dumping and, consequently, environmental pollution is increasing every year, despite ongoing cleaning actions. The problem is multidimensional and a consequence of failure to cover the whole territory of the country with the service, low awareness of citizens, poor communication with citizens and no strategies regarding the legal obligations of these polluters, principles established by law and environmental pollution and long-term consequences of these actions in particular;
- The technical capacities of municipalities/their public operators are still insufficient. Waste collection and transportation equipment is outdated (~ 14 years) and, given its production year, is in need of constant repairs;
- There are initiatives in some municipalities to provide access to the separation at source of recyclable waste, mainly plastic, paper, cardboard and aluminum and organic waste as well, but we cannot still calculate the recycling rate in the country. Yet, based on the information available and given the quantities of waste that end up in the landfill every year, we can assume that the rate is very low;
- Municipalities have made concrete steps in implementing important processes that derive from the laws and planning documents on the field of waste management. However, some municipalities have not implemented basic processes, such as drafting a municipal waste management plan, municipal regulation on waste management and appointment of a municipal waste management officer;
- Progress in the field of waste management is unbalanced. Some regions and municipalities are more advanced and have significantly better technical capacities than other regions or municipalities. Central policies and donor support should be directed towards ensuring a balanced development in the sector.

REFERENCES

Kosovo Statistical Agency (2011) "Census Atlas - Kosovo 2011".

Kosovo Agency of Statistics (2016) "Kosovo Population, Households and Housing Census 2011-Final Results, Population by Gender, Ethnicity and Settlement"

Law on Waste (No. 02/L-30)

Annual Report on Waste Management, Reporting Year 2017/2018-Municipality of Prishtinë/Prishtina

Annual Report on Waste Management, Reporting Year 2017/2018-Municipality of Glogoc/Glogovac

Annual Report on Waste Management, Reporting Year 2017/2018-Municipality of Fushë

Kosovë/Kosovo Polje

Annual Report on Waste Management, Reporting Year 2017/2018-Municipality of

Gračanica/Gračanica

Annual Report on Waste Management, Reporting Year 2017/2018-Municipality of Lipjan/Lipljan

Annual Report on Waste Management, Reporting Year 2017/2018-Municipality of Obiliq/Obilić

Annual Report on Waste Management, Reporting Year 2017/2018-Municipality of Podujeva/o

Annual Report on Waste Management, Reporting Year 2017/2018-Municipality of Mitrovica

Annual Report on Waste Management, Reporting Year 2017/2018-Municipality of Skenderaj/Srbica

Annual Report on Waste Management, Reporting Year 2017/2018-Municipality of Vushtrri/Vučitrn

Annual Report on Waste Management, Reporting Year 2017/2018-Municipality of Zvečan/Zvečan

Annual Report on Waste Management, Reporting Year 2017/2018-Municipality of Peja/Peć

Annual Report on Waste Management, Reporting Year 2017/2018-Municipality of Istog/Istok

Annual Report on Waste Management, Reporting Year 2017/2018-Municipality of Klina

Annual Report on Waste Management, Reporting Year 2017/2018-Municipality of Prizren

Annual Report on Waste Management, Reporting Year 2017/2018-Municipality of Suhareka/Suva Reka

Annual Report on Waste Management, Reporting Year 2017/2018-Municipality of

Malisheva/Mališevo

Annual Report on Waste Management, Reporting Year 2017/2018-Municipality of

Rahovec/Orahovac

Annual Report on Waste Management, Reporting Year 2017/2018-Municipality of Dragash/Dragaš

Annual Report on Waste Management, Reporting Year 2017/2018-Municipality of

Mamusha/Mamuša

Annual Report on Waste Management, Reporting Year 2017/2018-Municipality of Ferizaj/Uroševac

Annual Report on Waste Management, Reporting Year 2017/2018-Municipality of Kaçanik/Kaçanik

Annual Report on Waste Management, Reporting Year 2017/2018-Municipality of Shtime/Štimlje

Annual Report on Waste Management, Reporting Year 2017/2018-Municipality of Hani i Elezit/Elez Han

Annual Report on Waste Management, Reporting Year 2017/2018-Municipality of Gjilan/Gnjilane

Annual Report on Waste Management, Reporting Year 2017/2018-Municipality of Kamenica

Annual Report on Waste Management, Reporting Year 2017/2018-Municipality of Viti/Vitina
Annual Report on Waste Management, Reporting Year 2017/2018-Municipality of Novobërdë/Novo
Brdo
Annual Report on Waste Management, Reporting Year 2017/2018-Municipality of Partesh/Parteš
Annual Report on Waste Management, Reporting Year 2017/2018-Municipality of Ranillug/Ranilug
Annual Report on Waste Management, Reporting Year 2017/2018-Municipality of Gjakova/Đakovica
Annual Report on Waste Management, Reporting Year 2017/2018-Municipality of Deçan/Deçani
Annual Report on Waste Management, Reporting Year 2017/2018-Municipality of Junik

ANNEXES

Annex 1 Quantity of collected and generated waste in Kosovo

	Municipalities / RWC Region / REGION	General and service data				Collected waste amount (2018)			Waste generation (2018)	
		Number of inhabitants (ASK-2011)	Number of inhabitants served	Number of households (ASK-2011)	Number of households served (12/2018)	Collected mixed municipal waste (ton/year)	of which bulky (ton/year)	Collected mixed municipal waste (kg /year)	Waste generation per capita (kg/year)	Waste generation per capita (kg/day)
1	Prishtinë/Prishtina	198,897	341,508	40,528	69,587	72,458.00	200.56	72,458,000.00	212.17	0.58
2	Glogoc/Glogovac	58,531	45,933	8,786	6,895	6,021.30		6,021,300.00	131.09	0.36
3	Fushë Kosovë/Kosovo Polje	34,827	50,060	6,580	9,458	13,500.00		13,500,000.00	269.68	0.74
4	Graçanicë/Gračanica	10,675	10,102	2,421	2,291	3,706.00		3,706,000.00	366.87	1.01
5	Lipjan/Lipljan	57,605	28,587	9,497	4,713	7,709.00		7,709,000.00	269.67	0.74
6	Obiliq/Obilić	21,549	13,460	3,852	2,406	7,238.00		7,238,000.00	537.75	1.47
7	Podujevë/Podujevo ⁴	88,499	32,878	13,440	4,993	11,093.00		11,093,000.00	337.40	0.92
	RWC "Pastrimi"	470,583	522,528	85,104	100,343	121,725.30	200.56	121,725,300.00	232.95	0.64
R1	PRISHTINË/PRISTINA REGION	470,583	522,528	85,104	100,343	121,725.30	200.56	121,725,300.00	232.95	0.64
8	Mitrovicë/Mitrovica	71,909	71,773	13,173	13,148	23,652.00		23,652,000.00	329.54	0.90
9	Skenderaj/Srbica	50,858	24,568	7,682	3,711	6,284.73		6,284,730.00	255.81	0.70
10	Vushtrri/Vučitrn ⁵	69,870	69,870	11,866	11,866	24,692.00	202.00	24,692,000.00	353.40	0.97
	RWC Uniteti	192,637	166,211	32,721	28,725	54,628.73	202.00	54,628,730.00	328.67	0.90
11	North Mitrovica/Mitrovicë									
12	Zvečan/Zvečan	7,481	6,534	1,895	1,655	3,818.00		3,818,000.00	584.37	1.60
13	Zubin Potok									
14	Leposaviq/Leposavić									
R2	MITROVICË/MITROVICA REGION	200,118	172,744	34,616	30,380	58,446.73	202.00	58,446,730.00	338.34	0.93
15	Peja/Peć	96,450	82,110	17,682	15,053	34,965.00		34,965,000.00	425.83	1.17
16	Istog/Istok ²	39,289	22,393	6,741	3,842	5,943.00		5,943,000.00	265.40	0.73
17	Klinë/Klina	38,496	31,295	5,843	4,750	10,067.60		10,067,600.00	321.70	0.88
	RWC Ambienti	174,235	135,797	30,266	23,645	50,975.60		50,975,600.00	375.38	1.03
R3	PEJA/PEĆ REGION	174,235	135,797	30,266	23,645	50,975.60		50,975,600.00	375.38	1.03
18	Prizren	177,781	173,862	29,625	28,972	51,180.00	5,214.64	51,180,000.00	294.37	0.81
19	Suharekë/Suva Reka	59,722	37,067	9,145	5,676	13,591.00		13,591,000.00	366.66	1.00
20	Malishevë/Mališevo ³	54,613	52,898	6,879	6,663	9,002.00		9,002,000.00	170.18	0.47
21	Rahovec/Orahovac	56,208	39,313	8,221	5,750	12,279.50		12,279,500.00	312.35	0.86
22	Dragash/Dragaš	33,997	16,892	6,215	3,088	6,277.00		6,277,000.00	371.60	1.02
	RWC Ekoregjioni	382,321	320,033	60,085	50,149	92,329.50	5,214.64	92,329,500.00	288.50	0.79
23	Mamushë/Mamuša	5,507	3,405	566	350	1,140.00		1,140,000.00	334.76	0.92
R4	PRIZREN REGION	387,828	323,439	60,651	50,499	93,469.50	5,214.64	93,469,500.00	288.99	0.79

	Municipalities / RWC Region / REGION	General and service data				Collected waste amount (2018)			Waste generation (2018)	
		Number of inhabitants (ASK-2011)	Number of inhabitants served	Number of households (ASK-2011)	Number of households served (12/2018)	Collected mixed municipal waste (ton/year)	of which bulky (ton/year)	Collected mixed municipal waste (kg /year)	Waste generation per capita (kg/year)	Waste generation per capita (kg/day)
24	Ferizaj/Uroševac	108,610	69,879	18,359	11,812	21,045.00		21,045,000.00	301.17	0.83
25	Kaçanik/Kaçanik	33,409	14,822	5,547	2,461	3,010.00		3,010,000.00	203.07	0.56
26	Shtime/Štimlje	27,324	12,860	4,158	1,957	3,093.00		3,093,000.00	240.51	0.66
	RWC Pastrimi	169,343	97,561	28,064	16,230	27,148.00		27,148,000.00	278.27	0.76
27	Hani i Elezit/Elez Han ³	9,403	6,366	1,452	983	1,392.00		1,392,000.00	218.67	0.60
28	Shtërpce/Štrpce									
R5	FERIZAJ/UROŠEVAC REGION	178,746	103,927	29,516	17,213	28,540.00		28,540,000.00	274.62	0.75
29	Gjilan/Gnjilane	90,178	64,676	17,115	12,275	21,420.69		21,420,690.00	331.20	0.91
30	Kamenicë/Kamenica	36,085	14,206	6,419	2,527	3,764.00		3,764,000.00	264.96	0.73
31	Viti/Vitina	46,987	21,956	7,520	3,514	5,106.00		5,106,000.00	232.55	0.64
32	Novobërdë/Novo Brdo ³	6,729	7,574	1,449	1,631	1,842.00		1,842,000.00	243.19	0.67
	RWC Ekohigjiena	179,979	108,413	32,503	19,947	32,132.69		32,132,690.00	296.39	0.81
33	Partesh/Parteš	1,787	1,787	418	418	602.00		602,000.00	336.88	0.92
34	Kllokot/Klokot									
35	Ranillug/Ranilug	3,866	3,866	956	956	1,175.00		1,175,000.00	303.93	0.83
R6	GJILAN/GNJILANE REGION	185,632	114,066	33,877	21,321	33,909.69		33,909,690.00	297.28	0.81
36	Gjakova/Đakovica ¹	94,556	64,820	16,303	11,176	23,988.00		23,988,000.00	370.07	1.01
	RWC CABRATI	94,556	64,820	16,303	11,176	23,988.00		23,988,000.00	370.07	1.01
37	Deçan/Deçane	40,019	12,338	5,887	1,815	2,913.00		2,913,000.00	236.10	0.65
38	Junik	6,084	6,558	770	830	523.00		523,000.00	79.75	0.22
R7	GJAKOVA/ĐAKOVICA REGION	140,659	83,716	22,960	13,821	27,424.00		27,424,000.00	327.58	0.90
	KOSOVO	1,737,801	1,456,217	296,990	257,222	414,490.82	5,617.20	414,490,820.00	284.64	0.78

□ The Municipality has not submitted the report to KEPA for the reporting year 2017/2018;

* In some municipalities, the data reported by some municipalities have been changed, because they have relied on the data provided by the operator and submitted with verification documents by the operator;

¹ In the municipality of Gjakova/Đakovica, the operator reports on the disposal of 13,917 tonnes of waste per year, but the amount reported by the municipality has been taken as a reference, because the transfer station in Gjakova/Đakovica was used for disposal in the past;

² In Istog/Istok municipality, although the amount of waste collected/disposed was provided as an estimate, because waste is not measured, the amount provided in operator's annual report was taken as a reference;

³ In the municipalities of Malisheva/Mališevo, Hani i Elezit/Elez Han, and Novobërdë/Novo Brdo, though the Municipality has not reported the data in the report submitted to KEPA, operator reports were received in the course of verification process, and those values have been presented on the table;

⁴ In Podujevë/o municipality, the data reflect public operator's data, since no evidence of deposition by the private operator has been submitted;

⁵ In Vushtrri/Vucitrn Municipality evidence for disposal of 20,200 tonnes of demolition waste have also been submitted, but not included in the table, as municipal waste generation rate is calculated based on quantities of municipal waste;

Annex 2 Overview of overall municipal waste collection and transportation service coverage in 2017 and 2018


		General information			Coverage with waste collection services				
Municipalities/ RWC Region / REGION	Number of inhabitants (ASK-2011)	Number of households (ASK-2011)	Number of active businesses in the municipality 2018	Number of institutions in the municipality 2018	Number of households receiving service (2017)	Number of households receiving service (2018)	Number of businesses receiving service (2018)	Number of institutions receiving service (2018)	
1 Prishtinë/Pristina	198,897.00	40,528.00	11,855	91	46,711	69,587	11,855	91	
2 Glogoc/Glogovac	58,531.00	8,786.00	2,157	71	6,023	6,895	457	69	
3 Fushë Kosovë/Kosovo Polje	34,827.00	6,580.00	720	53	7,951	9,458	540	44	
4 Graçanicë/Gračanica	10,675.00	2,421.00	783	19	2,259	2,291	192	19	
5 Lipjan/Lipljan	57,605.00	9,497.00	2,800	93	4,336	4,713	500	46	
6 Obiliq/Obiliç ⁴	21,549.00	3,852.00		29	3,357	2,406	154	29	
7 Podujevë/Podujevo ⁴	88,499.00	13,440.00	3,277	97	4,769	4,993	849	97	
RWC "Pastrimi"	470,583.00	85,104.00	21,592	453	75,406	100,343	14,547	395	
R1 PRISHTINË/PRISTINA REGION	470,583.00	85,104.00	21,592	453	75,406	100,343	14,547	395	
8 Mitrovicë/Mitrovica	71,909.00	13,173.00	1,200	53	13,148	13,148	1,200	53	
9 Skenderaj/Srbica	50,858.00	7,682.00	499	78	1,815	3,711	413	55	
10 Vushtrri/Vučitrn	69,870.00	11,866.00	1,054	47	6,072	11,866	1,054	47	
RWC Uniteti	192,637.00	32,721.00	2,753	178	21,035	28,725	2,667	155	
11 North Mitrovica/Mitrovicë									
## Zveçan/Zvečan ¹									
13 Zubin Potok									
14 Leposaviq/Leposaviç									
R2 MITROVICË/A REGION	192,637.00	32,721.00	2,753	178	21,035	28,725	2,667	155	
15 Peja/Peç	96,450.00	17,682.00	2,534	169	15,015	15,053	2,465	169	
16 Istog/Istok	39,289.00	6,741.00	594	34	3,760	3,842	594	34	
17 Klinë/Klina	38,496.00	5,843.00	2,200	61	4,794	4,750	504	55	
RWC Ambienti	174,235.00	30,266.00	5,328	264	23,569	23,645	3,563	258	
R3 PEJA/PEÇ REGION	174,235.00	30,266.00	5,328	264	23,569	23,645	3,563	258	
18 Prizren	177,781.00	29,625.00	4,567	252	28,972	28,972	4,567	252	
19 Suharekë/Suva Reka	59,722.00	9,145.00	1,414	39	4,722	5,676	362	38	
20 Malishevë/Mališevo	54,613.00	6,879.00		64	6,355	6,663	625	64	
21 Rahovec/Orahovac	56,208.00	8,221.00	996	72	5,633	5,750	850	70	
22 Dragash/Dragaš	33,997.00	6,215.00	92	18	2,997	3,088	20	13	
RWC Ekoregjioni	382,321.00	60,085.00	7,069	445	48,679	50,149	6,424	437	
23 Mamushë/Mamuša	5,507.00	566.00	76	5	317	350	41	5	
R4 PRIZREN REGION	387,828.00	60,651.00	7,145	450	48,996	50,499	6,465	442	
24 Ferizaj/Uroševac ⁶	108,610.00	18,359.00			11,331	11,812			
25 Kaçanik/Kaçanik ⁷	33,409.00	5,547.00		40	2,395	2,461		35	
26 Shtime/Štimlje	27,324.00	4,158.00	350	32	1,872	1,957	27	32	
RWC Pastrimi	169,343.00	28,064.00	350	72	15,598	16,230	27	67	

		General information				Coverage with waste collection services			
	Municipalities/ RWC Region / REGION	Number of inhabitants (ASK-2011)	Number of households (ASK-2011)	Number of active businesses in the municipality 2018	Number of institutions in the municipality 2018	Number of households receiving service (2017)	Number of households receiving service (2018)	Number of businesses receiving service (2018)	Number of institutions receiving service (2018)
27	Han i Elezit/Elez Han	9,403.00	1,452.00	245	23	892	983	245	23
28	Shtërpçë/Štrpçe								
R5	FERIZAJ/UROŠEVAC REGION	178,746.00	29,516.00	595	95	16,490	17,213	272	90
29	Gjilan/Gnjilane ³	90,178.00	17,115.00	4,823	105	10,355	12,275	1,084	129
30	Kamenicë/Kamenica ³	36,085.00	6,419.00	2,318		2,374	2,527	261	62
31	Viti/Vitina ³	46,987.00	7,520.00			3,229	3,514	314	50
32	Novobërdë/Novo Brdo ³								
	RWC Ekohigjiena	173,250.00	31,054.00	7,141	105	15,958	18,316	1,659	241
33	Partesh/Parteš	1,787.00	418.00	30		418	418	30	
34	Kllokot/Klokot								
35	Ranillug/Ranilug	3,866.00	956.00	30	21	956	956	30	22
R6	GJILAN/GNJILANE REGION	178,903.00	32,428.00	7,201	126	17,332	19,690	1,719	263
36	Gjakova/Đakovica ⁸	94,556.00	16,303.00			10,853	11,176		
	RWC CABRATI	94,556.00	16,303.00			10,853	11,176		
37	Deçan/Dečani	40,019.00	5,887.00	1,353	33	1,484	1,815	251	33
38	Junik	6,084.00	770.00	102	8	630	830	99	8
R7	GJAKOVA/ĐAKOVICA REGION	140,659.00	22,960.00	1,455	41	12,967	13,821	350	41
	KOSOVO	1,723,591.00	293,646.00	46,069	1,607	215,795	253,936	29,583	1,644

		Waste collection service coverage rate				
Municipalities/ RWC Region / REGION	Household service coverage rate (2017)	Household service coverage rate (2018)	Household service coverage rate increase or decrease 2017 -2018 (% points)	Service coverage rate for businesses - 2018 points	Service coverage rate for institutions (2018)	
1 Prishtinë/Pristina	100.0%	100.0%	0%	100.0%	100.0%	
2 Glogoc/Glogovac	68.6%	78.5%	10%	21.2%	97.2%	
3 Fushë Kosovë/Kosovo Polje	100.0%	100.0%	0%	75.0%	83.0%	
4 Graçanicë/Gračanica	93.3%	94.6%	1%	24.5%	100.0%	
5 Lipjan/Lipljan	45.7%	49.6%	4%	17.9%	49.5%	
6 Obiliq/Obilić ⁴	87.1%	62.5%	-25%		100.0%	
7 Podujevë/Podujevo ⁴	35.5%	37.2%	2%	25.9%	100.0%	
RWC "Pastrimi"	79.7%	80.4%	0.7%	67.4%	87.2%	
R1 PRISHTINË/PRISTINA REGION	79.7%	80.4%	0.7%	67.4%	87.2%	
8 Mitrovicë/Mitrovica	99.8%	99.8%	0%	100.0%	100.0%	
9 Skenderaj/Srbica	23.6%	48.3%	25%	82.8%	70.5%	
10 Vushtrri/Vučitrn	51.2%	100.0%	49%	100.0%	100.0%	
RWC Uniteti	58.2%	82.7%	24.5%	96.9%	87.1%	
11 North Mitrovica/Mitrovicë						
## Zvečan/Zvečan ¹						
13 Zubin Potok						
14 Leposaviq/Leposavić						
R2 MITROVICË/A REGION	58.2%	82.7%	24.5%	96.9%	87.1%	
15 Peja/Peć	84.9%	85.1%	0%	97.3%	100.0%	
16 Istog/Istok	55.8%	57.0%	1%	100.0%	100.0%	
17 Klinë/Klina	82.0%	81.3%	-1%	22.9%	90.2%	
RWC Ambienti	77.9%	78.1%	0.3%	66.9%	97.7%	
R3 PEJA/PEĆ REGION	77.9%	78.1%	0.3%	66.9%	97.7%	
18 Prizren	97.8%	97.8%	0%	100.0%	100.0%	
19 Suharekë/Suva Reka	51.6%	62.1%	10%	25.6%	97.4%	
20 Malishevë/Mališevo	92.4%	96.9%	4%		100.0%	
21 Rahovec/Orahovac	68.5%	69.9%	1%	85.3%	97.2%	
22 Dragash/Dragaš	48.2%	49.7%	1%	21.7%	72.2%	
RWC Ekoregjioni	81.0%	83.5%	2.4%	90.9%	98.2%	
23 Mamushë/Mamuša	56.0%	61.8%	6%	53.9%	100.0%	
R4 PRIZREN REGION	80.8%	83.3%	2.5%	90.5%	98.2%	
24 Ferizaj/Uroševac ⁶	61.7%	64.3%	3%			
25 Kaçanik/Kaçanik ⁷	43.2%	44.4%	1%		87.5%	
26 Shtime/Štimlje	45.0%	47.1%	2%	7.7%	100.0%	
RWC Pastrimi	55.6%	57.8%	2.3%	7.7%	93.1%	

		Waste collection service coverage rate				
Municipalities/ RWC Region / REGION	Household service coverage rate (2017)	Household service coverage rate (2018)	Household service coverage rate increase or decrease from 2017 to 2018	Service coverage rate for businesses - 2018 points	Service coverage rate for institutions (2018)	
27 Han i Elezit/Elez Han	61.4%	67.7%	6%	100.0%	100.0%	
28 Shtërpçë/Štrpce						
R5 FERIZAJ/UROŠEVAC REGION	55.9%	58.3%	2.4%	45.7%	94.7%	
29 Gjilan/Gnjilane ³	60.5%	71.7%	11%	22.5%	100.0%	
30 Kamenicë/Kamenica ³	37.0%	39.4%	2%	11.3%		
31 Viti/Vitina ³	42.9%	46.7%	4%			
32 Novobërdë/Novo Brdo ³						
RWC Ekohigjiena	51.4%	59.0%	7.6%	23.2%	100.0%	
33 Partesh/Parteš	100.0%	100.0%	0%	100.0%		
34 Kllokot/Klokot						
35 Ranillug/Ranilug	100.0%	100.0%	0%	100.0%	100.0%	
R6 GJILAN/GNJILANE REGION	53.4%	60.7%	7.3%	23.9%	100.0%	
36 Gjakova/Đakovica ⁸	66.6%	68.6%	2%			
RWC CABRATI	66.6%	68.6%	2.0%			
37 Deçan/Dečani	25.2%	30.8%	6%	18.6%	100.0%	
38 Junik	81.8%	100.0%	18%	97.1%	100.0%	
R7 GJAKOVA/ĐAKOVICA REGION	56.5%	60.2%	3.7%	24.1%	100.0%	
KOSOVO	70.9%	75.6%	5.4%	64.2%	100.0%	

 The Municipality has not submitted the report to KEPA for the reporting year 2017/2018;

 The data reported by the municipality were not verified by the operator and were therefore not included in the calculation;

* In general, all data reported by municipalities have changed, based on the findings of the verification process. We recommend that the data is based on operator's reports in the coming years;

* In some cases, the coverage rate is above 100% and is limited to 100%, as this results for several reasons, such as: the number of households in the municipality is significantly higher than in the 2011 census, or because the municipality has updated the list of clients, using the property tax registry, which may be more extensive than the real one;

* In calculating the coverage rate in the Pristina region, in order not to distort the formula (for the reasons given above), the number of households served in caseshen it is greater than the existing number of households (Pristina and Fushë Kosovë/Kosovo Polje), the existing number of households was read;

¹ The data for the Municipality of Zvečan were not supported by a source document from the operator, so they were are not included in the calculation;

² The data for the municipality of Novobërdë/Novo Brdo were not supported by a source document from the operator, so they were not included in the calculation;

³ The municipalities of Gjilan/Gnjilane, Viti/Vitina and Kamenica have not submitted verification documents for the data. The operator has supported the reported data and was therefore included in the calculation. We recommend that the data is based on operator's reports in the coming years;

⁴ There has been a drop in billing (service coverage) in the municipality of Obiliq/Obilic, because a number of households in the Municipality of Pristina have been billed as households belonging to Obiliq/Obilić municipality;

⁵ Only the data from the public operator have been calculated in the municipality of Podujeva/o, as the private operator does not appear to be contracted by the municipality;

⁶ 1581 businesses and 70 institutions served in the municipality of Ferizaj/Uroševac were calculated, as data on the number of existing businesses and institutions were not recorded;

⁷ 221 businesses served in the municipality of Kaçanik/Kaçanik have not been calculated, as the data on the number of existing businesses were not recorded;

⁸ 4300 businesses and 241 institutions served were not calculated in the municipality of Gjakova/Đakovica, as the data on the number of existing businesses were not registered;

Annex 3 Overview of fee collection for overall municipal waste collection and transportation service in 2017

		Billing for waste collection service in 2017 (€)					Fee collection for waste collection service in 2017 (€)				
Municipalities/ RWC Region / REGION	Billing for household service (2017)	Billing for business service (2017)	Billing for institution service (2017)	Billing for contracted service (2017)	Billing for services for all categories (2017)	Fee collection for household service (2017)	Fee collection for business service (2017)	Fee collection for institution service (2017)	Fee collection for contracted service (2017)	Fee collection for services for all categories (2017)	
1 Prishtinë/Pristina	€ 2,676,142.00	€ 423,736.31	€ 166,884.12	€ 1,076,900.20	€ 4,343,662.63	€ 2,568,178.00	€ 323,677.50	€ 119,867.63	€ 1,056,405.86	€ 4,068,128.99	
2 Glogoc/Glogovac	€ 328,572.30	€ 32,135.93	€ 11,032.00	€ 43,855.04	€ 415,595.27	€ 220,855.51	€ 21,803.25	€ 38,678.88	€ 11,453.63	€ 292,791.27	
3 Fushë Kosovë/Kosovo Polje	€ 451,976.00	€ 37,576.26	€ 11,259.67	€ 85,641.67	€ 586,453.60	€ 387,089.00	€ 27,603.01	€ 13,350.30	€ 64,822.73	€ 492,865.04	
4 Graçanicë/Gračanica	€ 126,218.00	€ 21,909.98	€ 590.26	€ 694.32	€ 149,412.56	€ 28,894.00	€ 5,170.34	€ 320.63	€ 6,609.38	€ 40,994.35	
5 Lipjan/Lipljan	€ 223,805.00	€ 16,228.12	€ 2,109.48	€ 111,046.95	€ 353,189.55	€ 178,811.00	€ 7,549.69	€ 1,058.28	€ 78,414.70	€ 265,833.67	
6 Obiliq/Obilić	€ 154,033.00	€ 11,617.10	€ 7,785.32	€ 54,005.36	€ 227,440.78	€ 154,731.00	€ 11,741.27	€ 7,146.48	€ 63,689.36	€ 237,308.11	
7 Podujevë/Podujevo	€ 258,843.00	€ 71,303.16	€ 37,373.46	€ 78,964.09	€ 446,483.71	€ 203,808.00	€ 45,656.66	€ 44,372.62	€ 70,745.99	€ 364,583.27	
RWC "Pastrimi"	€ 4,219,589.30	€ 614,506.86	€ 237,034.31	€ 1,451,107.63	€ 6,522,238.10	€ 3,742,366.51	€ 443,201.72	€ 224,794.82	€ 1,352,141.65	€ 5,762,504.70	
R1 PRISHTINË/PRISTINA REGION	€ 4,219,589.30	€ 614,506.86	€ 237,034.31	€ 1,451,107.63	€ 6,522,238.10	€ 3,742,366.51	€ 443,201.72	€ 224,794.82	€ 1,352,141.65	€ 5,762,504.70	
8 Mitrovicë/Mitrovica	€ 632,800.00				€ 632,800.00	€ 267,238.00				€ 267,238.00	
9 Skenderaj/Srbica	€ 86,204.00	€ 63,161.41	€ 72,997.33		€ 222,362.74	€ 58,662.00	€ 39,413.75	€ 55,079.39		€ 153,155.14	
10 Vushtrri/Vučitrn	€ 324,984.00	€ 109,643.04	€ 148,516.56	€ 67,734.75	€ 650,878.35	€ 185,199.00	€ 74,100.72	€ 112,192.56	€ 67,734.75	€ 439,227.03	
RWC Uniteti	€ 1,043,988.00	€ 172,804.45	€ 221,513.89	€ 67,734.75	€ 1,506,041.09	€ 511,099.00	€ 113,514.47	€ 167,271.95	€ 67,734.75	€ 859,620.17	
11 North Mitrovica/Mitrovicë											
12 Zvečan/Zvečan ¹											
13 Zubin Potok											
14 Leposaviq/Leposavić											
R2 MITROVICË/MITROVICA REGION	€ 1,043,988.00	€ 172,804.45	€ 221,513.89	€ 67,734.75	€ 1,506,041.09	€ 511,099.00	€ 113,514.47	€ 167,271.95	€ 67,734.75	€ 859,620.17	
15 Peja/Peć	€ 838,719.00	€ 310,857.00	€ 131,351.00	€ 9,172.00	€ 1,290,099.00	€ 505,645.00	€ 264,615.00	€ 115,606.00	€ 9,172.00	€ 895,038.00	
16 Istog/Istok	€ 195,774.00	€ 54,424.00	€ 63,847.00	€ 31,876.00	€ 345,921.00	€ 138,816.00	€ 44,656.00	€ 60,788.00	€ 31,976.00	€ 276,236.00	
17 Klinë/Klina	€ 284,043.51	€ 48,455.76	€ 27,803.75		€ 360,303.02	€ 152,159.70	€ 36,080.05	€ 53,419.26		€ 241,659.01	
RWC Ambienti	€ 1,318,536.51	€ 413,736.76	€ 223,001.75	€ 41,048.00	€ 1,996,323.02	€ 796,620.70	€ 345,351.05	€ 229,813.26	€ 41,148.00	€ 1,412,933.01	
R3 PEJA/PEĆ REGION	€ 1,318,536.51	€ 413,736.76	€ 223,001.75	€ 41,048.00	€ 1,996,323.02	€ 796,620.70	€ 345,351.05	€ 229,813.26	€ 41,148.00	€ 1,412,933.01	
18 Prizren	€ 1,681,715.00	€ 393,408.00	€ 93,348.00		€ 2,168,471.00	€ 1,103,756.00	€ 292,194.00	€ 84,341.00		€ 1,480,291.00	
19 Suharekë/Suva Reka	€ 224,526.00	€ 49,116.93	€ 31,780.72	€ 120,091.86	€ 425,515.51	€ 191,810.00	€ 43,520.27	€ 27,591.74	€ 127,282.38	€ 390,204.39	
20 Malishevë/Mališevo	€ 315,532.00	€ 71,995.50	€ 52,057.52	€ 150,798.87	€ 590,383.89	€ 243,595.00	€ 58,671.96	€ 42,753.91	€ 74,247.33	€ 419,268.20	
21 Rahovec/Orahovac	€ 244,857.00	€ 82,028.00	€ 19,821.00	€ 91,088.00	€ 437,794.00	€ 200,126.00	€ 65,681.00	€ 19,351.00	€ 91,045.00	€ 376,203.00	
22 Dragash/Dragaš	€ 180,324.82	€ 20,880.38	€ 30,900.24		€ 232,105.44	€ 168,847.76	€ 17,628.57	€ 33,347.59		€ 219,823.92	
RWC Ekoregjioni	€ 2,646,954.82	€ 617,428.81	€ 227,907.48	€ 361,978.73	€ 3,854,269.84	€ 1,908,134.76	€ 477,695.80	€ 207,385.24	€ 292,574.71	€ 2,885,790.51	
23 Mamushë/Mamuša ²											
R4 PRIZREN REGION	€ 2,646,954.82	€ 617,428.81	€ 227,907.48	€ 361,978.73	€ 3,854,269.84	€ 1,908,134.76	€ 477,695.80	€ 207,385.24	€ 292,574.71	€ 2,885,790.51	
24 Ferizaj/Uroševac	€ 618,779.00	€ 251,860.04	€ 454,277.18		€ 1,324,916.22	€ 557,108.00	€ 195,898.24	€ 417,680.31		€ 1,170,686.55	
25 Kaçanik/Kaçanik	€ 133,936.00	€ 29,991.43	€ 30,478.34		€ 194,405.77	€ 91,777.00	€ 25,975.20	€ 25,975.20		€ 143,727.40	
26 Shtime/Štimlje	€ 133,936.00	€ 41,066.72	€ 68,448.26		€ 243,450.98	€ 91,777.00	€ 34,674.39	€ 64,528.26		€ 190,979.65	
RWC Pastrimi	€ 886,651.00	€ 322,918.19	€ 553,203.78		€ 1,762,772.97	€ 740,662.00	€ 85,515.94	€ 169,394.59		€ 1,505,393.60	

		Billing for waste collection service in 2017 (€)					Fee collection for waste collection service in 2017 (€)				
	Municipalities/ RWC Region / REGION	Billing for household service (2017)	Billing for business service (2017)	Billing for institution service (2017)	Billing for contracted service (2017)	Billing for services for all categories (2017)	Fee collection for household service (2017)	Fee collection for business service (2017)	Fee collection for institution service (2017)	Fee collection for contracted service (2017)	Fee collection for services for all categories (2017)
27	Han i Elezit/Elez Han	€ 50,460.00	€ 11,168.20	€ 8,381.00		€ 70,009.20	€ 37,250.00	€ 9,546.20	€ 8,216.00		€ 55,012.20
28	Shtërpçë/Štrpçe										
R5	FERIZAJ/UROŠEVAC REGION	€ 937,111.00	€ 334,086.39	€ 561,584.78		€ 1,832,782.17	€ 777,912.00	€ 95,062.14	€ 177,610.59		€ 1,560,405.80
29	Gjilan/Gnjilane ⁴	€ 649,422.00	€ 150,020.36	€ 87,355.67		€ 886,798.03	€ 589,107.00	€ 153,233.12	€ 79,793.00		€ 822,133.12
30	Kamenicë/Kamenica ⁴	€ 138,445.00	€ 32,144.02	€ 20,078.19		€ 190,667.21	€ 117,157.00	€ 27,767.35	€ 22,072.33		€ 166,996.68
31	Viti/Vitina ⁴	€ 190,680.00	€ 32,013.03	€ 35,315.54		€ 258,008.57	€ 144,849.00	€ 24,191.03	€ 24,191.03		€ 193,231.06
32	Novobërdë/Novo Brdo ³										
	RWC Ekohigjiena	€ 978,547.00	€ 214,177.41	€ 142,749.40		€ 1,335,473.81	€ 851,113.00	€ 205,191.50	€ 126,056.36		€ 1,182,360.86
33	Partesh/Parteš	€ 35,424.00	€ 637.20	€ 0.00		€ 36,061.20	€ 10,903.00	€ 189.00	€ 0.00		€ 11,092.00
34	Kllokot/Klokot										
35	Ranillug/Ranilug	€ 18,900.00	€ 2,523.05	€ 0.00		€ 21,423.05	€ 18,900.00	€ 2,523.05	€ 0.00		€ 21,423.05
R6	GJILAN/GNJILANE REGION	€ 1,032,871.00	€ 217,337.66	€ 142,749.40		€ 1,392,958.06	€ 880,916.00	€ 207,903.55	€ 126,056.36		€ 1,214,875.91
36	Gjakova/Đakovica	€ 555,331.00	€ 125,922.23	€ 76,738.00	€ 160,739.00	€ 918,730.23	€ 469,614.00	€ 101,080.05	€ 82,663.00	€ 165,338.00	€ 818,695.05
	RWC CABRATI	€ 555,331.00	€ 125,922.23	€ 76,738.00	€ 160,739.00	€ 918,730.23	€ 469,614.00	€ 101,080.05	€ 82,663.00	€ 165,338.00	€ 818,695.05
37	Dečan/Dečani	€ 55,264.00	€ 33,875.87	€ 17,866.21	€ 15,459.84	€ 122,465.92	€ 44,628.15	€ 27,738.62	€ 41,824.47	€ 814.81	€ 115,006.05
38	Junik	€ 8,715.00	€ 3,564.00	€ 7,224.00		€ 19,503.00	€ 8,715.00	€ 3,564.00	€ 7,224.00		€ 19,503.00
R7	GJAKOVA/ĐAKOVICA REGION	€ 619,310.00	€ 163,362.10	€ 101,828.21	€ 176,198.84	€ 1,060,699.15	€ 522,957.15	€ 132,382.67	€ 131,711.47	€ 166,152.81	€ 953,204.10
KOSOVO		€ 11,818,360.63	€ 2,533,263.03	€ 1,715,619.82	€ 2,098,067.95	€ 18,165,311.43	€ 9,140,006.12	€ 1,815,111.40	€ 1,264,643.69	€ 1,919,751.92	€ 14,649,334.20

		Collection rate for waste collection service in 2017 (%)				
	Municipalities/RWC Region / REGION	Household service fee collection rate (2017)	Business service fee collection rate (2017)	Institution service fee collection rate (2017)	Contracted service fee collection rate (2017)	Service fee collection rate for all categories (2017)
1	Prishtinë/Pristina	95.97%	76.39%	71.83%	98.10%	93.66%
2	Glogoc/Glogovac	67.22%	67.85%	350.61%	26.12%	70.45%
3	Fushë Kosovë/Kosovo Polje	85.64%	73.46%	118.57%	75.69%	84.04%
4	Graçanicë/Gračanica	22.89%	23.60%	54.32%	951.92%	27.44%
5	Lipjan/Lipljan	79.90%	46.52%	50.17%	70.61%	75.27%
6	Obiliq/Obilić	100.45%	101.07%	91.79%	117.93%	104.34%
7	Podujevë/Podujevo	78.74%	64.03%	118.73%	89.59%	81.66%
	RWC "Pastrimi"	88.69%	72.12%	94.84%	93.18%	88.35%
R1	PRISHTINË/PRISTINA REGION	88.69%	72.12%	94.84%	93.18%	88.35%
8	Mitrovicë/Mitrovica	42.23%				42.23%
9	Skenderaj/Srbica	68.05%	62.40%	75.45%		68.88%
10	Vushtrri/Vučitrn	56.99%	67.58%	75.54%	100.00%	67.48%
	RWC Uniteti	48.96%	65.69%	75.51%	100.00%	57.08%
11	North Mitrovica/Mitrovicë					
12	Zvečan/Zvečan ¹					
13	Zubin Potok					
14	Leposaviq/Leposavić					
R2	MITROVICË/MITROVICA REGION	48.96%	65.69%	75.51%	100.00%	57.08%
15	Peja/Peć	60.29%	85.12%	88.01%	100.00%	69.38%
16	Istog/Istok	70.91%	82.05%	95.21%	100.31%	79.86%
17	Klinë/Klina	53.57%	74.46%	192.13%		67.07%
	RWC Ambienti	60.42%	83.47%	103.05%	100.24%	70.78%
R3	PEJA/PEĆ REGION	60.42%	83.47%	103.05%	100.24%	70.78%
18	Prizren	65.63%	74.27%	90.35%		68.26%
19	Suharekë/Suva Reka	85.43%	88.61%	86.82%	105.99%	91.70%
20	Malishevë/Mališevo	77.20%	81.49%	82.13%	49.24%	71.02%
21	Rahovec/Orahovac	81.73%	80.07%	97.63%	99.95%	85.93%
22	Dragash/Dragaš	93.64%	84.43%	107.92%		94.71%
	RWC Ekoregjioni	72.09%	77.37%	91.00%	80.83%	74.87%
23	Mamushë/Mamuša ²					
R4	PRIZREN REGION	72.09%	77.37%	91.00%	80.83%	74.87%
24	Ferizaj/Uroševac	90.03%	77.78%	91.94%		88.36%
25	Kaçanik/Kaçanik	68.52%	86.61%	85.23%		73.93%
26	Shtime/Štimlje	68.52%	84.43%	94.27%		78.45%
	RWC Pastrimi	83.53%	26.48%	30.62%		85.40%

		Collection rate for waste collection service in 2017 (%)				
Municipalities/ RWC Region / REGION	Household service fee collection rate (2017)	Business service fee collection rate (2017)	Institution service fee collection rate (2017)	Contracted service fee collection rate (2017)	Service fee collection rate for all categories (2017)	
27 Han i Elezit/Elez Han	73.82%	85.48%	98.03%		78.58%	
28 Shtërpce/Štrpce						
R5 FERIZAJ/UROŠEVAC REGION	83.01%	28.45%	31.63%		85.14%	
29 Gjilan/Gnjilane ⁴	90.71%	102.14%	91.34%		92.71%	
30 Kamenicë/Kamenica ⁴	84.62%	86.38%	109.93%		87.59%	
31 Viti/Vitina ⁴	75.96%	75.57%	68.50%		74.89%	
32 Novobërdë/Novo Brdo ³						
RWC Ekohigjiena	86.98%	95.80%	88.31%		88.53%	
33 Partesh/Parteš	30.78%	29.66%			30.76%	
34 Kllokot/Klokot						
35 Ranillug/Ranilug	100.00%	100.00%			100.00%	
R6 GJILAN/GNJILANE REGION	85.29%	95.66%	88.31%		87.22%	
36 Gjakova/Đakovica	84.56%	80.27%	107.72%	102.86%	89.11%	
RWC CABRATI	84.56%	80.27%	107.72%	102.86%	89.11%	
37 Deçan/Dečani	80.75%	81.88%	234.10%	5.27%	93.91%	
38 Junik	100.00%	100.00%	100.00%		100.00%	
R7 GJAKOVA/ĐAKOVICA REGION	84.44%	81.04%	129.35%	94.30%	89.87%	
KOSOVO	77.34%	71.65%	73.71%	91.50%	80.64%	

□ The Municipality has not submitted the report to KEPA for the reporting year 2017/2018;

□ The data reported by the municipality were not verified by the operator and were therefore not included in the calculation;

* In many cases, fee collection rate for waste management services is over 100%. Yet, it is not limited to 100%, since the calculation of the collected amounts includes old customer debts;

In general, all data reported by municipalities have changed, based on the findings of the verification process. We recommend that the data is based on

* operator's reports in the coming years;

¹ The data for the Municipality of Zvečan/Zvečan were not supported by a source document from the operator, so they were not included in the calculation;

² The data for the municipality of Mamushë/Mamuša were not supported by a source document from the operator, so they were not included in the calculation;

³ The data for the municipality of Novobërdë/Novo Brdo were not reported in full and were not supported by a source document from the operator, so they were not included in the calculation;

The municipalities of Gjilan/Gnjilane, Viti/Vitina and Kamenica have not submitted verification documents for the data. The operator has supported the

⁴ reported data and was therefore included in the calculation. We recommend that the data is based on operator's reports in the coming years;

Annex 4 Overview of fee collection for overall municipal waste collection and transportation service in 2018

		Billing for waste collection service in 2018 (€)					Fee collection for waste collection service in 2018 (€)				
	Municipalities/RWC Region / REGION	Billing for household service (2018)	Billing for business service (2018)	Billing for institution service (2018)	Billing for contracted service (2018)	Billing for the service for all categories (2018)	Fee collection for household service (2018)	Fee collection for business service (2018)	Fee collection for institution service (2018)	Fee collection for contracted service (2018)	Billing for the service for all categories (2018)
1	Prishtinë/Prishtina	€ 3,901,639.00	€ 518,204.00	€ 166,091.00	€ 1,010,210.85	€ 5,596,144.85	€ 1,586,773.00	€ 429,645.00	€ 126,736.00	€ 984,070.13	€ 3,127,224.13
2	Glogoc/Glogovac	€ 350,182.09	€ 43,236.00	€ 7,889.00	€ 44,286.88	€ 445,593.97	€ 297,589.50	€ 26,822.00	€ 5,781.00	€ 46,458.17	€ 376,650.67
3	Fushë Kosovë/Kosovo Polje	€ 514,312.00	€ 42,372.00	€ 14,667.00	€ 85,037.65	€ 656,388.65	€ 463,584.00	€ 34,823.00	€ 7,451.00	€ 71,507.61	€ 577,365.61
4	Graçanicë/Gračanica	€ 128,733.00	€ 12,860.33	€ 9,691.00	€ 9,690.68	€ 160,975.01	€ 27,510.00	€ 5,169.00	€ 7,017.00	€ 7,017.30	€ 46,713.30
5	Lipjan/Lipljan	€ 253,964.00	€ 21,761.00	€ 2,047.00	€ 91,993.01	€ 369,765.01	€ 219,386.00	€ 8,249.00	€ 385.00	€ 122,591.84	€ 350,611.84
6	Obiliq/Obilić	€ 129,367.00	€ 11,298.00	€ 42,298.00	€ 42,298.18	€ 225,261.18	€ 137,297.00	€ 11,257.00	€ 38,881.00	€ 38,880.90	€ 226,315.90
7	Podujevë/Podujevo	€ 249,540.80	€ 84,782.00	€ 37,303.00	€ 65,466.58	€ 437,092.38	€ 190,506.00	€ 62,982.00	€ 25,821.00	€ 70,255.77	€ 349,564.77
	RWC Pastrimi	€ 5,527,737.89	€ 734,513.33	€ 279,986.00	€ 1,348,983.83	€ 7,891,221.05	€ 2,922,645.50	€ 578,947.00	€ 212,072.00	€ 1,340,781.72	€ 5,054,446.22
R1	PRISHTINË/PRISTINA REGION	€ 5,527,737.89	€ 734,513.33	€ 279,986.00	€ 1,348,983.83	€ 7,891,221.05	€ 2,922,645.50	€ 578,947.00	€ 212,072.00	€ 1,340,781.72	€ 5,054,446.22
8	Mitrovicë/Mitrovica	€ 562,214.00	€ 135,544.00		€ 0.00	€ 697,758.00	€ 338,050.00	€ 83,875.00		€ 0.00	€ 421,925.00
9	Skenderaj/Srbica	€ 155,523.00	€ 66,777.00	€ 56,824.00	€ 0.00	€ 279,124.00	€ 82,285.00	€ 60,142.00	€ 81,211.00	€ 0.00	€ 223,638.00
10	Vushtrri/Vučitrn	€ 431,423.84	€ 116,847.00	€ 112,054.00	€ 376,734.75	€ 1,037,059.59	€ 287,865.00	€ 92,181.00	€ 69,957.00	€ 376,734.75	€ 826,737.75
	RWC Uniteti	€ 1,149,160.84	€ 319,168.00	€ 168,878.00	€ 376,734.75	€ 2,013,941.59	€ 708,200.00	€ 236,198.00	€ 151,168.00	€ 376,734.75	€ 1,472,300.75
11	North Mitrovica/Mitrovicë										
12	Zvečan/Zvečan ¹										
13	Zubin Potok										
14	Leposaviq/Leposavić										
R2	MITROVICË/A REGION	€ 1,149,160.84	€ 319,168.00	€ 168,878.00	€ 376,734.75	€ 2,013,941.59	€ 708,200.00	€ 236,198.00	€ 151,168.00	€ 376,734.75	€ 1,472,300.75
15	Peja/Peć	€ 832,687.70	€ 333,693.00	€ 151,643.00	€ 10,252.00	€ 1,328,275.70	€ 721,199.00	€ 262,813.00	€ 161,190.00	€ 10,081.00	€ 1,155,283.00
16	Istog/Istok	€ 221,027.00	€ 57,494.00	€ 63,406.00	€ 31,074.00	€ 373,001.00	€ 188,857.90	€ 64,391.00	€ 49,185.00	€ 28,138.00	€ 330,571.90
17	Klinë/Klina	€ 290,701.92	€ 52,751.00	€ 35,522.00	€ 0.00	€ 378,974.92	€ 171,481.15	€ 52,673.00	€ 32,672.00	€ 0.00	€ 256,826.15
	RWC Ambienti	€ 1,344,416.62	€ 443,938.00	€ 250,571.00	€ 41,326.00	€ 2,080,251.62	€ 1,081,538.05	€ 379,877.00	€ 243,047.00	€ 38,219.00	€ 1,742,681.05
R3	PEJA/PEĆ REGION	€ 1,344,416.62	€ 443,938.00	€ 250,571.00	€ 41,326.00	€ 2,080,251.62	€ 1,081,538.05	€ 379,877.00	€ 243,047.00	€ 38,219.00	€ 1,742,681.05
18	Prizren	€ 1,739,421.00	€ 406,187.00	€ 78,645.00	€ 0.00	€ 2,224,253.00	€ 1,169,998.00	€ 326,001.00	€ 72,825.00	€ 0.00	€ 1,568,824.00
19	Suharekë/Suva Reka	€ 255,113.00	€ 56,982.00	€ 30,941.00	€ 135,984.03	€ 479,020.03	€ 226,883.00	€ 53,513.00	€ 26,264.00	€ 144,610.25	€ 451,270.25
20	Malishevë/Mališevo	€ 326,183.00	€ 72,912.00	€ 51,160.00	€ 184,271.08	€ 634,526.08	€ 260,118.00	€ 58,972.00	€ 55,067.00	€ 213,149.99	€ 587,306.99
21	Rahovec/Orahovac	€ 246,423.00	€ 115,322.00	€ 101,258.00	€ 95,447.00	€ 558,450.00	€ 237,430.00	€ 101,551.00	€ 96,234.00	€ 90,423.00	€ 525,638.00
22	Dragash/Dragaš	€ 183,973.97	€ 21,414.00	€ 31,548.00	€ 0.00	€ 236,935.97	€ 149,127.74	€ 18,073.00	€ 31,317.00	€ 0.00	€ 198,517.74
	RWC Ekoregjioni	€ 2,751,113.97	€ 672,817.00	€ 293,552.00	€ 415,702.11	€ 4,133,185.08	€ 2,043,556.74	€ 558,110.00	€ 281,707.00	€ 448,183.24	€ 3,331,556.98
23	Mamushë/Mamuša ²										
R4	PRIZREN REGION	€ 2,751,113.97	€ 672,817.00	€ 293,552.00	€ 415,702.11	€ 4,133,185.08	€ 2,043,556.74	€ 558,110.00	€ 281,707.00	€ 448,183.24	€ 3,331,556.98
24	Ferizaj/Uroševac	€ 663,115.00	€ 273,661.00	€ 456,324.00	€ 0.00	€ 1,393,100.00	€ 581,505.00	€ 365,050.00	€ 464,198.00	€ 0.00	€ 1,410,753.00
25	Kaçanik/Kaçanik	€ 135,824.00	€ 30,684.00	€ 30,720.00	€ 0.00	€ 197,228.00	€ 104,722.00	€ 22,186.00	€ 22,965.00	€ 0.00	€ 149,873.00
26	Shtime/Štimlje	€ 135,824.00	€ 43,063.00	€ 67,120.00	€ 218,019.25	€ 464,026.25	€ 104,722.00	€ 26,494.00	€ 74,309.00	€ 183,811.79	€ 389,336.79
	RWC Pastrimi	€ 934,763.00	€ 347,408.00	€ 554,164.00	€ 218,019.25	€ 2,054,354.25	€ 790,949.00	€ 413,730.00	€ 561,472.00	€ 183,811.79	€ 1,949,962.79
27	Han i Elezit/Elez Han	€ 58,980.00	€ 13,478.00	€ 5,864.00	€ 5,864.40	€ 84,186.40	€ 46,655.00	€ 10,887.00	€ 5,464.00	€ 5,464.40	€ 68,470.40
28	Shtërpcë/Štrpce										
R5	FERIZAJ/UROŠEVAC REGION	€ 993,743.00	€ 360,886.00	€ 560,028.00	€ 223,883.65	€ 2,138,540.65	€ 837,604.00	€ 424,617.00	€ 566,936.00	€ 189,276.19	€ 2,018,433.19

		Billing for waste collection service in 2018 (€)					Fee collection for waste collection service in 2018 (€)				
	Municipalities/RWC Region / REGION	Billing for household service (2018)	Billing for business service (2018)	Billing for institution service (2018)	Billing for contracted service (2018)	Billing for the service for all categories (2018)	Fee collection for household service (2018)	Fee collection for business service (2018)	Fee collection for institution service (2018)	Fee collection for contracted service (2018)	Fee collection for services for all categories (2018)
29	Gjilan/Gnjilane ⁴	€ 659,884.00	€ 165,915.00	€ 78,301.00		€ 904,100.00	€ 563,633.00	€ 162,498.00	€ 77,665.00	€ 0.00	€ 803,796.00
30	Kamenicë/Kamenica ⁴	€ 147,960.00	€ 30,839.00	€ 19,606.00		€ 198,405.00	€ 140,445.00	€ 34,016.00	€ 21,501.00	€ 0.00	€ 195,962.00
31	Viti/Vitina ⁴	€ 192,856.00	€ 35,865.00	€ 25,614.00		€ 254,335.00	€ 188,597.00	€ 40,705.00	€ 21,184.00	€ 0.00	€ 250,486.00
32	Novobërdë/Novo Brdo ³										
	RWC Ekohigjiena	€ 1,000,700.00	€ 232,619.00	€ 123,521.00		€ 1,356,840.00	€ 892,675.00	€ 237,219.00	€ 120,350.00	€ 0.00	€ 1,250,244.00
33	Partesh/Parteš	€ 35,432.00	€ 648.00			€ 36,080.00	€ 13,253.00	€ 254.00			€ 13,507.00
34	Kllokot/Klokot										
35	Ranilug/Ranilug	€ 16,469.00	€ 2,208.00			€ 18,677.00	€ 16,469.00	€ 2,208.00			€ 18,677.00
R6	GJILAN/GNJILANE REGION	€ 1,052,601.00	€ 235,475.00	€ 123,521.00	€ 0.00	€ 1,411,597.00	€ 922,397.00	€ 239,681.00	€ 120,350.00	€ 0.00	€ 1,282,428.00
36	Gjakova/Đakovica	€ 570,482.00	€ 131,347.00	€ 135,145.00	€ 139,085.00	€ 976,059.00	€ 505,808.00	€ 122,041.00	€ 137,903.00	€ 149,608.00	€ 915,360.00
	RWC CABRATI	€ 570,482.00	€ 131,347.00	€ 135,145.00	€ 139,085.00	€ 976,059.00	€ 505,808.00	€ 122,041.00	€ 137,903.00	€ 149,608.00	€ 915,360.00
37	Deçan/Dečani	€ 56,031.00	€ 35,200.00	€ 21,357.00	€ 14,477.36	€ 127,065.36	€ 49,842.00	€ 28,882.00	€ 19,109.00	€ 13,292.27	€ 111,125.27
38	Junik	€ 34,860.00	€ 14,256.00	€ 7,224.00		€ 56,340.00	€ 32,800.00	€ 14,256.00	€ 7,224.00	€ 0.00	€ 54,280.00
R7	GJAKOVA/ĐAKOVICA REGION	€ 661,373.00	€ 180,803.00	€ 163,726.00	€ 153,562.36	€ 1,159,464.36	€ 588,450.00	€ 165,179.00	€ 164,236.00	€ 162,900.27	€ 1,080,765.27
	KOSOVO	€ 13,480,146.32	€ 2,947,600.33	€ 1,840,262.00	€ 2,560,192.70	€ 20,828,201.35	€ 9,104,391.29	€ 2,582,609.00	€ 1,739,516.00	€ 2,556,095.17	€ 15,982,611.46

Collection rate for waste collection service in 2018 (%)						
	Municipalities/RWC Region / REGION	Household service fee collection rate (2018)	Business service fee collection rate (2018)	Institution service fee collection rate (2018)	Contracted service fee collection rate (2018)	Service fee collection rate for all categories (2018)
1	Prishtinë/Pristina	40.67%	82.91%	76.31%	97.41%	55.88%
2	Glogoc/Glogovac	84.98%	62.04%	73.28%	104.90%	84.53%
3	Fushë Kosovë/Kosovo Polje	90.14%	82.18%	50.80%	84.09%	87.96%
4	Graçanicë/Gračanica	21.37%	40.19%	72.41%	72.41%	29.02%
5	Lipjan/Lipljan	86.38%	37.91%	18.81%	133.26%	94.82%
6	Obiliq/Obilić	106.13%	99.64%	91.92%	91.92%	100.47%
7	Podujevë/Podujevo	76.34%	74.29%	69.22%	107.32%	79.98%
	RWC Pastrimi	52.87%	78.82%	75.74%	99.39%	64.05%
R1	PRISHTINË/PRISTINA REGION	52.87%	78.82%	75.74%	99.39%	64.05%
8	Mitrovicë/Mitrovica	60.13%	61.88%			60.47%
9	Skenderaj/Srbica	52.91%	90.06%	142.92%		80.12%
10	Vushtrri/Vučitrn	66.72%	78.89%	62.43%	100.00%	79.72%
	RWC Uniteti	61.63%	74.00%	89.51%	100.00%	73.11%
11	North Mitrovica/Mitrovicë					
12	Zvečan/Zvečan ¹					
13	Zubin Potok					
14	Leposaviq/Leposavić					
R2	MITROVICË/A REGION	61.63%	74.00%	89.51%	100.00%	73.11%
15	Peja/Peć	86.61%	78.76%	106.30%	98.33%	86.98%
16	Istog/Istok	85.45%	112.00%	77.57%	90.55%	88.62%
17	Klinë/Klina	58.99%	99.85%	91.98%		67.77%
	RWC Ambienti	80.45%	85.57%	97.00%	92.48%	83.77%
R3	PEJA/PEĆ REGION	80.45%	85.57%	97.00%	92.48%	83.77%
18	Prizren	67.26%	80.26%	92.60%		70.53%
19	Suharekë/Suva Reka	88.93%	93.91%	84.88%	106.34%	94.21%
20	Malishevë/Mališevo	79.75%	80.88%	107.64%	115.67%	92.56%
21	Rahovec/Orahovac	96.35%	88.06%	95.04%	94.74%	94.12%
22	Dragash/Dragaš	81.06%	84.40%	99.27%		83.79%
	RWC Ekoregjioni	74.28%	82.95%	95.96%	107.81%	80.61%
23	Mamushë/Mamuša ²					
R4	PRIZREN REGION	74.28%	82.95%	95.96%	107.81%	80.61%
24	Ferizaj/Uroševac	87.69%	133.39%	101.73%		101.27%
25	Kaçanik/Kaçanik	77.10%	72.30%	74.76%		75.99%
26	Shtime/Štimlje	77.10%	61.52%	110.71%	84.31%	83.90%
	RWC Pastrimi	84.61%	119.09%	101.32%	84.31%	94.92%
27	Han i Elezit/Elez Han	79.10%	80.78%	93.18%	93.18%	81.33%
28	Shtërpcë/Štrpce					
R5	FERIZAJ/UROŠEVAC REGION	84.29%	117.66%	101.23%	84.54%	94.38%

Collection rate for waste collection service in 2018 (%)					
Municipalities/RWC Region / REGION	Household service fee collection rate (2018)	Business service fee collection rate (2018)	Institution service fee collection rate (2018)	Contracted service fee collection rate (2018)	Service fee collection rate for all categories (2018)
29 Gjilan/Gnjilane ⁴	85.41%	97.94%	99.19%		88.91%
30 Kamenicë/Kamenica ⁴	94.92%	110.30%	109.67%		98.77%
31 Viti/Vitina ⁴	97.79%	113.50%	82.70%		98.49%
32 Novobërdë/Novo Brdo ³					
RWC Ekohigjiena	89.21%	101.98%	97.43%		92.14%
33 Partesh/Parteš	37.40%	39.20%			37.44%
34 Kllokot/Klokot					
35 Ranillug/Ranilug	100.00%	100.00%			100.00%
R6 GJILAN/GNJILANE REGION	87.63%	101.79%	97.43%		90.85%
36 Gjakova/Đakovica	88.66%	92.91%	102.04%	107.57%	93.78%
RWC CABRATI	88.66%	92.91%	102.04%	107.57%	93.78%
37 Deçan/Dečani	88.95%	82.05%	89.47%	91.81%	87.46%
38 Junik	94.09%	100.00%	100.00%		96.34%
R7 GJAKOVA/ĐAKOVICA REGION	88.97%	91.36%	100.31%	106.08%	93.21%
KOSOVO	67.54%	87.62%	94.53%	99.84%	76.74%

□ The Municipality has not submitted the report to KEPA for the reporting year 2017/2018;

□ The data reported by the municipality were not verified by the operator and were therefore not included in the calculation;

* In many cases, fee collection rate for waste management services is over 100%. Yet, it is not limited to 100%, since the calculation of the collected amounts includes old customer debts;

In general, all data reported by municipalities have changed, based on the findings of the verification process. We recommend that the data is based on operator's reports in the coming years;

¹ The data for the Municipality of Zvečan/Zvečan were not supported by a source document from the operator, so they were are not included in the calculation;

² The data for the municipality of Mamushë/Mamuša were not supported by a source document from the operator, so they were are not included in the calculation;

³ The data for the municipality of Novobërdë/Novo Brdo were not reported in full and were not supported by a source document from the operator, so they were not included in the calculation;

⁴ The municipalities of Gjilan/Gnjilane, Viti/Vitina and Kamenica have not submitted verification documents for the data. The operator has supported the reported data and was therefore

Annex 5 Illegal dumpsites in 2017

	Municipalities/RWC Region/ REGION	Illegal dumpsites by size			Number of illegal dumpsites in total (2,017)
		Small dumpsites (1-5 litter bags 200 l)	Medium dumpsites (6- 20 garbage bags 200 l)	Large dumpsites (> 20 litter bags 200 l)	
1	Prishtinë/Pristina	27	52	84	163
2	Glogoc/Glogovac	24	33	33	90
3	Fushë Kosovë/Kosovo Polje	4	6	0	10
4	Graçanicë/Gračanica	1	9	11	21
5	Lipjan/Lipljan	17	47	33	97
6	Obiliq/Obilić	2	8	1	11
7	Podujevë/Podujevo	11	4	1	16
	RWC Pastrimi	86	159	163	408
R1	PRISHTINË/PRISTINA REGION	86	159	163	408
8	Mitrovicë/Mitrovica	4	6	3	13
9	Skenderaj/Srbica	7	16	12	35
10	Vushtrri/Vučitrn	7	10	6	23
	RWC Uniteti	18	32	21	71
11	North Mitrovica/Mitrovicë	5	11	4	20
12	Zveçan/Zvečan	5	13	15	33
13	Zubin Potok	14	16	4	34
14	Leposaviq/Leposavić	7	4	11	22
R2	MITROVICË/A REGION	49	76	55	180
15	Peja/Peć	4	9	6	19
16	Istog/Istok	12	6	4	22
17	Klinë/Klina	0	5	4	9
	RWC Ambienti	16	20	14	50
R3	PEJA/PEĆ REGION	16	20	14	50
18	Prizren	1	1	96	98
19	Suharekë/Suva Reka	4	20	146	170
20	Malishevë/Mališevo	5	16	81	102
21	Rahovec/Orahovac	48	9	2	59
22	Dragash/Dragaš	1	1	60	62
	RWC Ekoregjioni	59	47	385	491
23	Mamushë/Mamuša	1	4	2	7
R4	PRIZREN REGION	60	51	387	498
24	Ferizaj/Uroševac	1	18	32	51
25	Kaçanik/Kaçanik	4	10	9	23
26	Shtime/Štimlje	1	9	4	14
	RWC Pastrimi	6	37	45	88
27	Han i Elezit/Elez Han	4	9	8	21
28	Shtërpçë/Štrpce	6	10	59	75
R5	FERIZAJ/UROŠEVAC REGION	16	56	112	184
29	Gjilan/Gnjilane	4	51	13	68

	Municipalities/RWC Region/ REGION	Illegal dumpsites by size			Number of illegal dumpsites in total (2,017)
		Small dumpsites (1-5 litter bags 200 l)	Medium dumpsites (6- 20 garbage bags 200 l)	Large dumpsites (> 20 litter bags 200 l)	
30	Kamenicë/Kamenica	0	18	7	25
31	Viti/Vitina	8	26	26	60
32	Novobërdë/Novo Brdo	11	17	20	48
	RWC Ekohigjiëna	23	112	66	201
33	Partesh/Parteš	1	6	1	8
34	Klllokot/Klokot	0	0	4	4
35	Ranillug/Ranilug	4	4	7	15
R6	GJILAN/GNJILANE REGION	28	122	78	228
36	Gjakova/Đakovica	3	11	28	42
	RWC CABRATI				42
37	Dečan/Dečani	2	7	22	31
38	Junik	1	9	12	22
R7	GJAKOVA/ĐAKOVICA REGION	3	16	34	95
KOSOVO		261	511	871	1,643

* The presented data are based on the field research report that was drafted by KEPA and respective municipal officials and supported by GIZ in 2017;

Annex 6. Illegal dumpsites in 2019

	Municipalities / RWC Region / REGION	Illegal dumpsites by size			Illegal dumpsites by fraction					Total Illegal dumpsites
		Small dumpsites (1-5 litter bags 200 l)	Medium dumpsites (6-20 garbage bags 200 l)	Large dumpsites (> 20 litter bags 200 l)	Municipal waste	Construction and demolition waste	Indust. and hazardous waste	Bulky waste	Other waste	
1	Prishtinë/Pristina	91	31	25	40.50%	45.70%	7.40%	0.70%	5.60%	147
2	Glogoc/Glogovac	23	36	31	51.10%	43.00%	1.50%	4.40%	0.00%	90
3	Fushë Kosovë/Kosovo Polje	18	20	18	28.10%	71.90%	0.00%	0.00%	0.00%	56
4	Graçanicë/Gračanica	9	12	13	56.50%	13.00%	30.40%	0.00%	0.00%	34
5	Lipjan/Lipljan	15	46	85	56.10%	38.10%	2.50%	0.00%	3.30%	146
6	Obiliq/Obilić	10	37	22	59.70%	39.50%	0.80%	0.00%	0.00%	69
7	Podujevë/Podujevo	7	24	9	79.60%	18.40%	0.00%	0.00%	2.00%	40
	RWC Pastrimi	173	206	203	53.1%	38.5%	6.1%	0.7%	1.6%	582
R1	PRISHTINË/PRISTINA REGION	173	206	203	53.1%	38.5%	6.1%	0.7%	1.6%	582
8	Mitrovicë/Mitrovica	10	23	21	41.70%	14.60%	27.10%	15.60%	1.00%	54
9	Skenderaj/Srbica	24	23	47	70.80%	29.20%	0.00%	0.00%	0.00%	94
10	Vushtrri/Vučitrn	11	11	4	42.10%	55.30%	0.00%	2.60%	0.00%	26
	RWC Uniteti	45	57	72	51.5%	33.0%	9.0%	6.1%	0.3%	174
11	North Mitrovica/Mitrovicë									
12	Zvečan/Zvečan	29	12	6	53.80%	26.50%	4.30%	14.50%	0.90%	47
13	Zubin Potok									
14	Leposaviq/Leposavić									
R2	MITROVICË/A REGION	74	69	78	52.7%	29.8%	6.7%	10.3%	0.6%	221
15	Peja/Peć	128	69	40	46.30%	48.80%	1.30%	3.20%	0.40%	237
16	Istog/Istok	4	12	18	52.00%	46.00%	0.00%	2.00%	0.00%	34
17	Klinë/Klina	17	27	27	19.10%	57.40%	9.60%	1.70%	12.20%	71
	RWC Ambienti	149	108	85	39.1%	50.7%	3.6%	2.3%	4.2%	342
R3	PEJA/PEĆ REGION	149	108	85	39.1%	50.7%	3.6%	2.3%	4.2%	342
18	Prizren	1	9	32	0.00%	0.00%	5.30%	0.00%	94.70%	42
19	Suharekë/Suva Reka	32	53	44	40.70%	48.00%	4.90%	5.40%	1.00%	129
20	Malishevë/Mališevo	5	6	119	39.20%	44.10%	0.00%	16.80%	0.00%	130
21	Rahovec/Orahovac	11	11	14	37.90%	41.40%	13.80%	1.70%	5.20%	36
22	Dragash/Dragaš	27	39	33	49.60%	48.80%	0.80%	0.00%	0.80%	99
	RWC Ekoregjioni	76	118	242	33.5%	36.5%	5.0%	4.8%	20.3%	436
23	Mamushë/Mamuša	0	6	6	20.00%	5.00%	20.00%	0.00%	55.00%	12
R4	PRIZREN REGION	76	124	248	26.7%	20.7%	12.5%	2.4%	37.7%	448
24	Ferizaj/Uroševac	3	7	34	32.80%	65.60%	1.60%	0.00%	0.00%	44
25	Kaçanik/Kaçanik	5	6	35	41.40%	43.40%	7.10%	7.10%	1.00%	46
26	Shtime/Štimlje	7	15	21	36.90%	18.40%	31.10%	13.60%	0.00%	43
	RWC Pastrimi	15	28	90	37.0%	42.5%	13.3%	6.9%	0.3%	133
27	Han i Elezit/Elez Han	6	5	14	54.50%	43.20%	0.00%	2.30%	0.00%	25
28	Shtërpçë/Štrpce									
R5	FERIZAJ/UROŠEVAC REGION	21	33	104	45.8%	42.8%	6.6%	4.6%	0.2%	158

	Municipalities / RWC Region / REGION	Illegal dumpsites by size			Illegal dumpsites by fraction					Total Illegal dumpsites
		Small dumpsites (1-5 litter bags 200 l)	Medium dumpsites (6-20 garbage bags 200 l)	Large dumpsites (> 20 litter bags 200 l)	Municipal waste	Construction and demolition waste	Indust. and hazardous waste	Bulky waste	Other waste	
29	Gjilan/Gnjilane	41	27	11	51.00%	49.00%	0.00%	0.00%	0.00%	79
30	Kamenicë/Kamenica	9	21	20	69.00%	31.00%	0.00%	0.00%	0.00%	50
31	Viti/Vitina	18	15	5	54.50%	45.50%	0.00%	0.00%	0.00%	38
32	Novobërdë/Novo Brdo	5	17	61	46.60%	3.70%	49.10%	0.60%	0.00%	83
	RWC Ekohigjiena	73	80	97	55.3%	32.3%	12.3%	0.2%	0.0%	250
33	Partesh/Parteš	14	23	43	50.30%	27.90%	0.60%	4.80%	16.40%	80
34	Klllokot/Klokot									
35	Ranillug/Ranilug	23	15	9	45.40%	52.80%	1.90%	0.00%	0.00%	47
R6	GJILAN/GNJILANE REGION	110	118	149	50.3%	37.7%	4.9%	1.7%	5.5%	377
36	Gjakova/Đakovica	2	10	35	34.60%	36.20%	4.70%	23.60%	0.80%	47
	RWC CABRATI	2	10	35	34.6%	36.2%	4.7%	23.6%	0.8%	47
37	Deçan/Dečani	12	20	27	21.00%	79.00%	0.00%	0.00%	0.00%	59
38	Junik	5	4	3	50.00%	41.70%	8.30%	0.00%	0.00%	12
R7	GJAKOVA/ĐAKOVICA REGION	19	34	65	35.2%	52.3%	4.3%	7.9%	0.3%	118
	KOSOVO	622	692	932	44.6%	38.5%	7.1%	3.7%	6.1%	2246

The Municipality has not submitted the report to KEPA for the reporting year 2017/2018;

* The data presented were reported by municipalities based on field research in March 2019;

* Data is being verified and may undergo changes;

Shtojca7. Access to infrastructure for waste separation at source in 2018

	Municipalities/ RWC Region/ REGION	General information		Access to infrastructure for waste separation at source	
		Number of inhabitants (ASK-2011)	Number of households (ASK-2011)	Number of households with access to infrastructure for separation at source (2018)	Percentage of households have access to with access to infrastructure for separation at sour (2018)
1	Prishtinë/Pristina ¹	198,897.00	40,528.00	5,000	12.3%
2	Glogoc/Glogovac	58,531.00	8,786.00	127	1.4%
3	Fushë Kosovë/Kosovo Polje ²	34,827.00	6,580.00	5,842	88.8%
4	Graçanicë/Gračanica	10,675.00	2,421.00		
5	Lipjan/Lipljan	57,605.00	9,497.00		
6	Obiliq/Obilić	21,549.00	3,852.00		
7	Podujevë/Podujevo	88,499.00	13,440.00		
	RWC Pastrimi	470,583.00	85,104.00	10,969	12.9%
R1	PRISHTINË/PRISTINA REGION	470,583.00	85,104.00	10,969	12.9%
8	Mitrovicë/Mitrovica	71,909.00	13,173.00	7,418	56.3%
9	Skenderaj/Srbica	50,858.00	7,682.00		
10	Vushtrri/Vučitrn	69,870.00	11,866.00	650	5.5%
	RWC Uniteti	192,637.00	32,721.00	8,068	24.7%
11	North Mitrovica/Mitrovicë				
12	Zveçan/Zvečan	7,481.00	1,895.00		
13	Zubin Potok				
14	Leposaviq/Leposavić				
R2	MITROVICË/A REGION	200,118.00	34,616.00	8,068	23.3%
15	Peja/Peć	96,450.00	17,682.00		
16	Istog/Istok	39,289.00	6,741.00		
17	Klinë/Klina	38,496.00	5,843.00		
	RWC Ambienti	174,235.00	30,266.00	0	0.0%
R3	PEJA/PEĆ REGION	174,235.00	30,266.00	0	0.0%
18	Prizren	177,781.00	29,625.00	1,099	3.7%
19	Suharekë/Suva Reka ³	59,722.00	9,145.00		
20	Malishevë/Mališevo	54,613.00	6,879.00		
21	Rahovec/Orahovac	56,208.00	8,221.00		
22	Dragash/Dragaš	33,997.00	6,215.00		
	RWC Ekoregjioni	382,321.00	60,085.00	1,099	3.7%
R4	PRIZREN REGION	387,828.00	60,651.00	1,099	3.7%
23	Mamushë/Mamuša	5,507.00	566.00		
24	Ferizaj/Uroševac	108,610.00	18,359.00		
25	Kaçanik/Kaçanik	33,409.00	5,547.00		
26	Shtime/Štimlje	27,324.00	4,158.00		
	RWC Pastrimi	169,343.00	28,064.00	0	0.0%

Municipalities/ RWC Region/ REGION	General information		Access to infrastructure for waste separation at source	
	Number of inhabitants (ASK-2011)	Number of households (ASK-2011)	Number of households with access to infrastructure for separation at source (2018)	Percentage of households have access to with access to infrastructure for separation at sour (2018)
27 Han i Elezit/Elez Han	9,403.00	1,452.00		
28 Shtërpçë/Štrpce				
R5 FERIZAJ/UROŠEVAC REGION	178,746.00	29,516.00	0	0.0%
29 Gjilan/Gnjilane	90,178.00	17,115.00		
30 Kamenicë/Kamenica	36,085.00	6,419.00		
31 Viti/Vitina	46,987.00	7,520.00		
32 Novobërdë/Novo Brdo	6,729.00	1,449.00		
RWC Ekohigjiena	179,979.00	32,503.00	0	0.0%
33 Partesh/Parteš	1,787.00	418.00		
34 Kllokot/Klokot				
35 Ranillug/Ranilug	3,866.00	956.00		
R6 GJILAN/GNJILANE REGION	185,632.00	33,877.00	0	0.0%
36 Gjakova/Đakovica	94,556.00	16,303.00		
RWC CABRATI	94,556.00	16,303.00	0	0.0%
37 Deçan/Deçani	40,019.00	5,887.00		
38 Junik	6,084.00	770.00		
R7 GJAKOVA/ĐAKOVICA REGION	140,659.00	22,960.00	0	0.0%
KOSOVO	1,737,801.00	296,990.00	20,136.00	6.8%

The Municipality has not submitted the report to KEPA for the reporting year 2017/2018;

- ¹ The data for the Municipality of Pristina were not supported by any verification document, so they were are not included in the calculation;
- ² The data from the Municipality of Suhareka/Suva Reka were not supported by any verification document, so they were are not included in the calculation;
- ³ Data from the municipalities of Mitrovica, Vushtrri/Vučitrn, Fushë Kosovë/Kosovo Polje and Prizren are supported with verification documents, but it is recommended that these documents are not planning, but documents proving implementation and clearly indicating the reported value in the years to come;

Annex 8. Compliance with the legal and planning framework for waste management

	Municipalities/ RWC Region/ REGION	1.Drafting and adoption of MWMP	2.Drafting and adoption of Municipal Regulation on Waste Management ¹	3.WM Officer	4.Environmental Inspector	5.Contracting licensed operators for collection and transportation of municipal waste	6.6.Contracting licensed operators for collection and transportation of CDW ²	7.Setting service fees by undergoing the fee process	8.8. Designation of a facility for the collection, treatment and disposal of CDW ³	Number of implemented processes
1	Prishtinë/Pristina	1	1	1	0	1	0	1	0	5
2	Glogoc/Glogovac	1	1	1	1	1	0	1	1	7
3	Glogoc/Glogovac ⁶	1	1	1	0	1	0	1	0	5
4	Gračanicë/Gračanica	1	0	1	1	1	0	1	1	6
5	Lipjan/Lipljan	1	1	1	1	1	0	1	1	7
6	Obiliq/Obiliç ⁹	1	1	1	1	1	0	1	0	6
7	Podujevë/Podujevo ⁷	1	1	1	1	1	0	1	1	7
	KRM "Pastrimi"	100%	86%	100%	71%	100%	0%	100%	57%	77%
R1	PRISHTINË/PRISTINA REGION	100%	86%	100%	71%	100%	0%	100%	57%	77%
8	Mitrovicë/Mitrovica	1	1	1	1	1	0	1	1	7
9	Skenderaj/Srbica	1	1	1	1	1	0	1	1	7
10	Vushtrri/Vučitrn	1	1	1	1	1	0	1	1	7
	KRM "Uniteti"	100%	100%	100%	100%	100%	0%	100%	100%	88%
11	North Mitrovica/Mitrovicë									
12	Zvečan/Zvečan ⁵	1	0	0	0	0	0	0	0	1
13	Zubin- Potok									
14	Leposaviq/Leposavić									
R2	MITROVICË/A REGION	100%	50%	50%	50%	50%	0%	50%	50%	50%
15	Peja/Peć	1	1	1	1	1	0	1	0	6
16	Istog/Istok ⁹	1	1	1	1	1	0	0	0	5
17	Klinë/Klina	1	1	1	1	1	0	1	0	6
	KRM "Ambienti"	100%	100%	100%	100%	100%	0%	67%	0%	71%
R3	PEJA/PEĆ REGION	100%	100%	100%	100%	100%	0%	67%	0%	71%
18	Prizren ⁸	1	1	1	1	1	0	0	1	6
19	Suharekë/Suva Reka ⁵	1	0	0	1	0	0	0	1	3
20	Malishevë/Mališevo	0	0	1	1	1	0	0	1	4
21	Rahovec/Orahovac ⁸	1	1	1	1	0	0	0	1	5
22	Dragash/Dragaš ⁸	0	1	1	1	1	0	0	0	4
	KRM "Ekoregjioni"	60%	60%	80%	100%	60%	0%	0%	80%	55%
23	Mamushë/Mamuša	0	0	0	1	1	0	0	0	2
R4	PRIZREN REGION	60%	60%	80%	150%	110%	0%	0%	80%	68%
24	Ferizaj/Uroševac ⁷	1	0	0	1	0	0	0	1	3
25	Kaçanik/Kaçanik ⁷	1	0	1	1	1	0	0	1	5
26	Shtime/Štimlje	1	0	0	0	1	0	0	1	3
	KRM "Pastërtia"	100%	0%	33%	67%	67%	0%	0%	100%	46%
27	Han i Elezit/Elez Han ⁸⁹	1	1	1	1	1	0	0	0	5

	Municipalities/ RWC Region/ REGION	1.Drafting and adoption of MWMP	2.Drafting and adoption of Municipal Regulation on Waste Management ¹	3.WM Officer	4.Environmental Inspector	5.Contracting licensed operators for collection and transportation of municipal waste	6.6.Contracting licensed operators for collection and transportation of CDW ²	7.Setting service fees by undergoing the fee process	8.8. Designation of a facility for the collection, treatment and disposal of CDW ³	Number of implemented processes
28	Shtërpçë/Štrpce									
R5	FERIZAJ/UROŠEVAC REGION	100%	50%	67%	83%	83%	0%	0%	50%	54%
29	Gjilan/Gnjilane ⁶⁷	1	1	0	0	0	0	0	1	3
30	Kamenicë/Kamenica	0	0	0	1	0	0	0	1	2
31	Viti/Vitina ³⁴⁵⁸	0	0	0	1	0	0	0	1	2
32	Novobërdë/Novo Brdo ⁸	1	0	1	0	1	0	0	0	3
	KRM "Ekohigijena"	50%	25%	25%	50%	25%	0%	0%	75%	31%
33	Partesh/Parteš ⁶	0	0	0	0	0	0	0	1	1
34	Klllokot/Klokot									
35	Ranillug/Ranilug	1	0	0	1	0	0	0	0	2
R6	GJILAN/GNJILANE REGION	50%	8%	8%	50%	8%	0%	0%	58%	23%
36	Gjakova/Đakovica	1	1	1	1	1	0	0	1	6
	KRM "Çabрати "	100%	100%	100%	100%	100%	0%	0%	100%	75%
37	Deçan/Dečani ⁷	1	1	1	1	0	0	1	1	6
38	Junik ³⁸	0	1	1	1	1	0	0	1	5
R7	GJAKOVA/ĐAKOVICA REGION	67%	100%	100%	100%	67%	0%	33%	100%	71%
	KOSOVO - no. of municipalities that have implemented the process	26	20	23	26	23	0	13	21	19
	KOSOVO - the average of the process (s) accomplished	78.8%	60.6%	69.7%	78.8%	69.7%	0.0%	39.4%	63.6%	57.6%

0 The process has not been implemented

1 The process is implemented

The Municipality did not submit the report to KEPA for the reporting year 2017/2018;

¹ The process is evaluated in some municipalities if the municipal regulation is protocolled and signed;

² The process has 0 feasibility, as there is no licensed operator for this activity in Kosovo yet. Unable to contract licensed operators, some municipalities (Istog, Junik, Prizren, Rahovec, Ferizaj, Gjilan, Novobrdë, Prishtina, Podujevo and Mitrovica) have however taken steps in this regard, but as companies are not licensed, the requirement is assessed unfulfilled;

³ The municipality of Viti / Vitina submitted the NPMB in the draft version, and is therefore not registered as a completed process;

³ The Municipality of Junik submitted the NPM but did not submit a decision approving the plan, and was therefore not registered as a completed process;

⁴ Municipality of Viti / Vitina has submitted the Municipal Regulation on Waste Management in the draft version, and is therefore not registered as a completed process;

⁴ The Municipality of Gracanica has submitted the Municipal Regulation on Environmental Protection, and is therefore not registered as a completed process;

⁵ The municipality of Suhareka / Suva Reka has a municipal public enterprise officer that does not meet the requirements specified in the report, and is therefore not registered as a process;

⁵ The municipality of Viti / Vitina has submitted an official decision that is not within the prescribed deadline (31 March 2019), therefore it is not registered as a completed process;

⁵ The municipality of Zvecan has a municipal public enterprise officer that does not meet the requirements set out in the report, and therefore is not registered as a completed process;

⁶ Municipality of Gjilan / Gnjilane stated that it has an environmental inspector, however no verification document has been submitted, therefore it is not registered as a completed process;

⁶ The municipality of Parte ka / Parteit has stated that it has an environmental inspector, however no verification document has been submitted, therefore it has not been registered as a completed process;

- ⁶ The Municipality of Fushë Kosovë / Kosovo Polje stated that it has an environmental inspector, however the documentation submitted indicates that the inspector is for public services, therefore it is not registered as a completed process;
- ⁷ The Municipality of Deçan / De Deani has submitted a decision for the secondary services operator, which does not fulfill the contract request for municipal waste collection and transportation, therefore it is not registered as a completed process;
- ⁷ Municipality of Ferizaj has submitted an agreement with the secondary services operator, which does not fulfill the contract request for municipal waste collection and transportation, and therefore is not registered as a completed process;
- ⁷ Municipality of Gjilan / Gnjilane has submitted an agreement with the secondary services operator, which does not fulfill the contract request for municipal waste collection and transportation, and is therefore not registered as a completed process;
- ⁸ The Municipality of Dragash / Dragaash has not submitted a document certifying the tariff process, therefore it has not been registered as a completed process;
- ⁸ The Municipality of Junik did not submit a document certifying the tariff process, therefore it was not registered as a completed process;
- ⁸ The Municipality of Prizren has not submitted a document certifying the tariff process, therefore it is not registered as a completed process;
- ⁸ The Municipality of Rahovec / Orahovac has not submitted a document certifying the tariff process, therefore it is not registered as a completed process;
- ⁸ The municipality of Hani i Elezit has not submitted a document certifying the tariff process, therefore it is not registered as a completed process;
- ⁸ The Municipality of Novobërdë / Novo Brdo did not submit a document certifying the tariff process, therefore it was not registered as a completed process;
- ⁸ The Municipality of Viti / Vitina did not submit a document certifying the tariff process, therefore it was not registered as a completed process;
- ⁹ The Municipality of Istog has not submitted any documents to prove the location of the waste from construction and demolition of construction buildings;
- ⁹ The Municipality of Hani i Elezit has not submitted any documents to prove the location of the waste from construction and demolition of construction buildings;
- ⁹ Obiliq / Obili asnjë Municipality has not submitted any documents to prove the location of waste from construction and demolition of construction buildings;



german
cooperation
DEUTSCHE ZUSAMMENARBEIT

Implemented by
giz Deutsche Gesellschaft
für Internationale
Zusammenarbeit (GIZ) GmbH