



*Government of Republic of Kosovo
Ministry of Environment, Spatial Planning and Infrastructure*



KOSOVO ENVIRONMENTAL PROTECTION AGENCY

KOSOVO MUNICIPAL WASTE MANAGEMENT REPORT

KOSOVO MUNICIPAL WASTE MANAGEMENT REPORT

REPORTING YEAR OF 2019



Prishtina, 2021

CONTENTS

CONTENTS.....	3
ABBREVIATIONS	4
LIST OF TABLES, FIGURES AND MAPS	5
1.0 INTRODUCTION.....	6
1.1 Aim of the report.....	6
1.2 Data collection methodology	6
2.0 MUNICIPAL WASTE MANAGEMENT IN KOSOVO	7
2.1 Current situation	7
2.2 Municipal waste generation	8
2.3 Municipal waste disposal.....	11
3.0 STATE OF MUNICIPAL WASTE MANAGEMENT.....	12
3.1 Municipal waste collection service coverage.....	12
3.2 Fee collection.....	16
3.3 Illegal dumpsites	21
3.4 Waste separation at source - Recycling	24
3.5 Compliance with waste management legal and planning framework.....	25
3.6 Implementation of municipal waste management plans	28
3.7 Licensed waste management operators.....	29
3.8 Municipal waste management assets	30
4.0 FINDINGS AND RECOMMENDATIONS	32
REFERENCES	33
ANNEXES:.....	35

ABBREVIATIONS

MESPI	Ministry of Environment, Spatial Planning and Infrastructure
KEPA	Kosovo Environmental Protection Agency
GIZ	German Society for International Cooperation
AI	Administrative Instructions
AKM	Association of Kosovo Municipalities
MW	Municipal waste
BW	Bulky waste
C&D	Construction and Demolition
LW	Law on Waste
LEP	Law on Environmental Protection
MWMP	Municipal Waste Management Plan
PAMKOS	Association of Kosovo Waste Companies
PRKWM	Plan of Republic of Kosovo on Waste Management
MWMR	Municipal Waste Management Regulation
RL	Regional Landfill
RWC	Regional Waste Company
KAS	Kosovo Agency of Statistics
SRKWM	Strategy of Republic of Kosovo on Waste Management
KLMC	Kosovo Landfill Management Company

List of tables, figures and maps

<u>Table 1.</u>	Quantity of MW generated and collected in Kosovo (2019)
<u>Table 2.</u>	Quantity of MW disposed (2019)
<u>Table 3.</u>	MW collection service coverage (2018 & 2019)
<u>Table 4.</u>	MW collection service coverage rate (2018 & 2019)
<u>Table 5.</u>	Billing for MW collection and transport service (2019)
<u>Table 6.</u>	MW collection and transport service fee collection (2019)
<u>Table 7.</u>	MW collection and transport service fee collection rate (%) (2019)
<u>Table 8.</u>	Illegal dumpsites by size in regions (June 2020)
<u>Table 9.</u>	Illegal dumpsites by fraction in regions (June 2020)
<u>Table 10.</u>	Compliance with waste management legal and planning framework (2018 & 2019)
<u>Table 11.</u>	Licensed MW management operators
<u>Table 12.</u>	Municipal assets for MW management
<u>Figure 1.</u>	MW generation by region at the national level expressed in kg/capita/year (2018 & 2019)
<u>Figure 2.</u>	Household MW collection and transport service coverage rate by municipality (2018 & 2019)
<u>Figure 3.</u>	Household MW collection and transport service coverage rate by region and at national level (2018 & 2019)
<u>Figure 4.</u>	MW collection and transport service fee collection for households by region and at national level (2018 & 2019)
<u>Figure 5.</u>	Household MW collection and transport service fee collection by municipality (2018 & 2019)
<u>Figure 6.</u>	Number of illegal dumpsites by size (June 2020)
<u>Figure 7.</u>	Illegal dumpsites by waste fraction (June 2020)
<u>Figure 8.</u>	Level (%) of implementation of required processes at national level (2018 & 2019)
<u>Map 1.</u>	MW generation in municipalities expressed in kg/capita/year (2018 & 2019)
<u>Map 2.</u>	MW collection and transport service coverage rate by municipality (2018 & 2019)
<u>Map 3.</u>	MW collection and transport service fee collection rate (2018 & 2019)
<u>Map 4.</u>	Illegal dumpsites by municipality (June 2020)

1.0 INTRODUCTION

1.1 *Aim of the report*

Law No. 04/L-060 on Waste is the legal basis for activities related to waste management in Kosovo. The Law and the respective Administrative Instructions regulate the monitoring and reporting duties of all stakeholders in the sector.

Kosovo Environmental Protection Agency - KEPA (Article 60 of Law No. 03/L-025 on Environmental Protection and Article 14, paragraph 1.8 of Law No. 04/L-060) is tasked with and given the responsibility of creating a waste management database and system. AMMK is also responsible for the development of the annual waste management report.

This report aims to provide a comprehensive and reliable overview of municipal waste management at municipal level, guiding the development of strategic policies, monitoring and implementation of the national integrated waste management strategy, municipal performance evaluation and fostering well-planned investments focusing on improving the state of environment, public health and economic aspects.

The content of this report introduces a current overview of the state of municipal waste management, including: implementation of legislation, service coverage on waste collection and transport, billing and fee collection, registration of illegal dumpsites, the amount of municipal waste collected and generated by municipalities, data on municipal initiatives for waste separation at source, etc.

The content of this report presents the data from the reporting year of 2019, using comparative method with the data of previous years of 2017/2018.

1.2 *Data collection methodology*

Prior to the reporting phase, with the support of the German Corporation for International Cooperation (GIZ), KEPA and Association of Kosovo Municipalities (AKM) held meetings to discuss on the format, procedure and timelines for reporting on municipal waste management for 2019.

The data in this report were taken from the reports of municipalities and licensed companies dealing with municipal waste collection and transportation, landfill management companies and Kosovo Agency of Statistics.

This is the second year in a row that the abovementioned stakeholders are reporting through a reporting format that KEPA has developed for the purpose of standardized reporting.

This report was compiled using the data reported by:

- Municipalities through municipal officers responsible for waste management;
- Waste collection operators (RWCs, MCs, etc.);
- Landfill management companies (KLMC, RWC, etc.).

The results of the data on illegal dumpsites are based on field registration conducted in all municipalities in June 2020, and these data were then reported on KEPA's standardized forms.

To verify the accuracy of data reported on, inter alia, the number of households served, fee collection, waste disposal, access to infrastructure for separation at source etc., necessary documentation was requested from municipalities and operators. These documents include: financial statements, billing lists, reports on quantities of waste disposed, etc.

Reported data on illegal dumpsites were verified via field visits to the locations selected on the ground.

Data and documents were then reviewed by a working group within the MESPI, assessments were done and the results of the 2019 municipal waste management report were extracted.

KEPA has forwarded the draft report to the municipalities to review it once again and avoid possible errors in the processed data.

2.0 MUNICIPAL WASTE MANAGEMENT IN KOSOVO

2.1 Current situation

Waste management in the Republic of Kosovo is regulated by Law No. 64/L-060 on Waste and other bylaws. An increased activity of waste management stakeholders was noticed with concrete initiatives undertaken to improve the situation in this sector. However, without proper implementation of the legal basis, investments and concrete projects in improving waste management, there will be no improvement of the situation in this sector.

Based on the data provided and reflected in the report, which includes the entire waste cycle, starting from production up to their final treatment, a move towards improvement in terms of indicators is noticed. The disposal of most of the generated waste in sanitary landfills remains a major problem at national level.

There are still no real initiatives at local or national level, indicating concrete actions towards a circular economy.

The reported data for this reporting year are not comprehensive, and there are some shortcomings in all aspects such as: generation, collection, treatment, etc. Yet, the reported data have undergone a verification process.

The amount of waste collected in 2019 is 2.19% higher compared to last year, while waste generation based on the amount of waste collected in 2019 is 269.18 kg/capita/year, which is 15.46 kg lower than last year.

Municipal waste collection service coverage in 2019 is 78.5%, marking an increase of 2.9% compared to last year.

A grave situation of sanitary landfills in Kosovo, aggravating further as a consequence of mismanagement, lack of rehabilitation investments and exceeding waste quantity intake capacities, has been recorded during this reporting year as well.

2.2 *Municipal waste generation*

As a result of cooperation with municipalities in the collection of municipal waste management data, a satisfactory database level has been reached. However, these data are not sufficient to provide an overview of waste composition, be it in individual municipalities or at regional level, or differentiated data on the amount of waste generated from rural or urban areas.

Yet, based on the data collected from reports of municipalities and operators dealing with municipal waste management, the total amount of waste generated can only be calculated based on an average generation per capita at municipal and national levels.

Consequently, based on the reported amount of collected waste and taking into account the number of inhabitants served, the waste generation rate per capita per day can be calculated, which results to 0.74 kg/inhabitant/day at national level.

Taking into account the number of 1,779.521 inhabitants in the country (as per 2011 census and population estimate for North Mitrovica, Leposaviq/Leposavic, Zubin Potok and Zvečan/Zvečan) and the annual amount of municipal waste per capita, which is approximately 0.74 kg/capita/day, the total amount of waste generated turns out to be around 480,648.62 tons/year.

As for bulky waste, based on data reported by municipalities, 5,214.64 t/year were collected in Prizren region, and smaller amounts or none in other regions (*see tab.1*).

Detailed data on the amount of waste collected and generated are provided in Annex 1 of the report.

Table 1. Quantity of MW generated and collected in Kosovo (2019)

	REGION	General and service data				Collected waste amount (2019)		Municipal waste generation (2019) ¹	
		Number of inhabitants (KAS-2011)	Number of inhabitants served	Number of households (KAS-2011)	Number of households served (12/2019)	Collected mixed municipal waste (ton/year)	of which bulky (ton/year)	Waste generation per capita (kg/year)	Waste generation per capita (kg/day)
R1	PRISTINA REGION	470,583	563,984	85,104	107,470	139806,41	200,56	247,89	0,68
R2	MITROVICË/A REGION	206,734	184,232	36,312	32,302	54005,67	202,00	274,38	0,75
R3	PEJA/PEÇ REGION	174,235	148,183	30,266	25,758	56774,00	0,00	383,13	1,05
R4	PRIZREN REGION	387,828	368,363	60,651	57,750	83477,04	5214,64	226,62	0,62
R5	FERIZAJ/UROŠEVAC REGION	185,695	109,134	31,001	18,059	31158,68	0,00	285,51	0,78
R6	GJILAN/GNJILANE REGION	188,188	98,449	34,387	18,011	35082,21	0,00	344,45	0,94
R7	GJAKOVA/ĐAKOVICA REGION	140,659	101,974	22,960	16,648	23466,76	0,00	230,13	0,63
KOSOVO		1,753,922	1,574,319	300.681	275.998	423,770.77	5,617.20	269.18	0.74

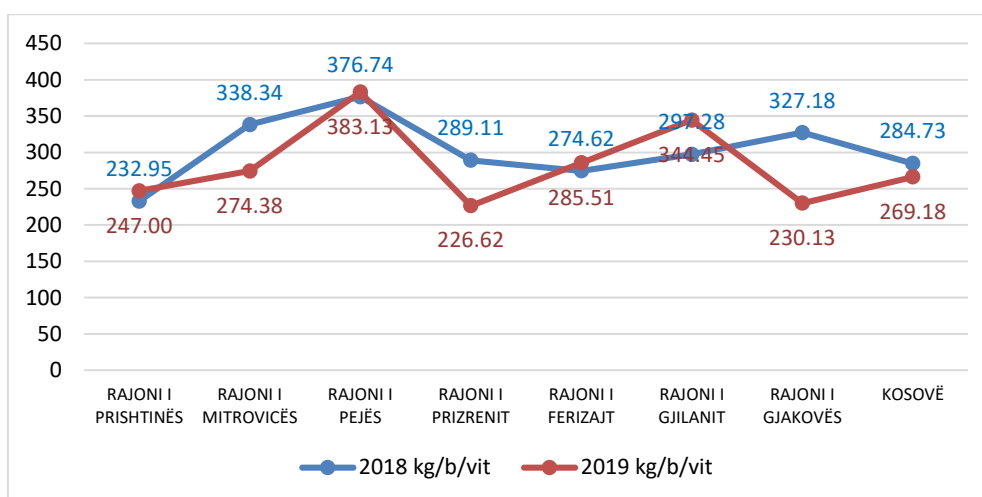
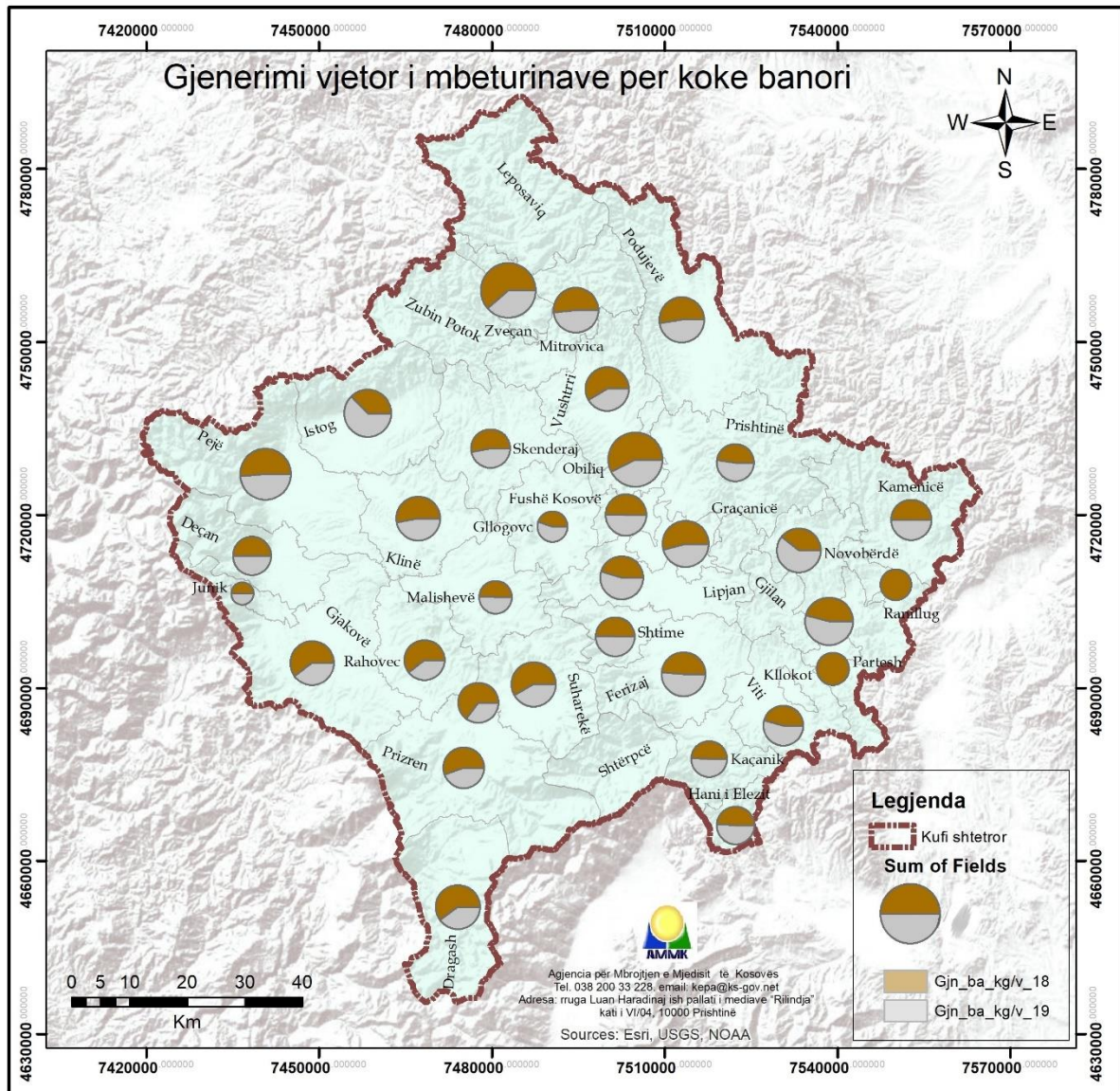


Figure 1. MW generation by region at the national level expressed in kg/capita/year, (2018 & 2019)

¹ Generation is based on the amount of municipal waste collected. Uncollected and bulky waste are not included in the calculation.



Map 1. MW generation in municipalities in kg/capita/year (2018 & 2019)

2.3 Municipal waste disposal

The amount of waste disposed in sanitary landfills managed by KLMC for 2019 is **337,397.19 tons/year** (see table 2). On the other hand, in other sanitary landfills managed by RWCs, the amount of waste disposed is about **112,484.62 tons/year**.

Hence, the amount of municipal waste disposed in sanitary landfills amounts to **449,881.81 tons/year** and does not include the amount of waste disposed in other non-sanitary landfills, such as the one in Istog/k (Tuçep/Tučep) or other landfills in the northern part of Kosovo, as there is no reported data.

Unlike in the previous year, the amount of waste deposited in 2019 has increased by **24,292.55 tons** or **5.7%** percentage wise.

Table 2. Quantity of MW disposed (2019)

Landfill/transfer station	Disposed waste (t/y)
Pristina (Mirash/Miraš) regional landfill	150,921.83
Gjilan/Gnjilane (Velekince/Velekinca) regional landfill	66,740.60
Podujevë/Podujevo Municipal Landfill	15,676.18
Prizren (Landovicë/Landovica) regional landfill	104,058.58
Subtotal of landfills managed by KLMC:	337,397.19
Mitrovicë/Mitrovica regional landfill (Gërmovë/Grmovo)	53,729.62
Pejë/Peć regional landfill (Sferkë/Svrhe)	52,688.00
Dragash/Dragaš municipal landfill	6,067.00
Subtotal in landfills managed by RWC:	112,484.62
Total amount of waste disposed in sanitary landfills:	449,881.81
Landfill in Istog/k (Tuçep/Tučep)	
Landfill in Zveçan/Zvečan*	
Zubin Potok (Lluçkarekë/Lučka Reka)	
Landfill in Leposaviq/Leposavić*	
Total amount of waste disposed in non-sanitary landfills:	
Total waste disposed:	449,881.81

* No data on these landfills were reported in this reporting year.

3.0 STATE OF MUNICIPAL WASTE MANAGEMENT

3.1 *Municipal waste collection service coverage*

Municipal waste collection service coverage for households until the end of 2019 at the national level is 78.5%. According to data reported on service coverage, out of 36 municipalities that have reported to KEPA, 5 municipalities have already reached the 100% service coverage rate.

It is important to note that due to outdated official data from KAS (2011 census) regarding the number of inhabitants and households in municipalities and a big change in population growing trends over the recent years, a significant number of municipalities have a bigger number of households that are billed, as opposed to the total number of households taken as reference by the KAS, such as: municipalities of Prishtinë/Priština, Fushë Kosovë/Kosovo Polje, Vushtrri/Vučitrn etc.

Also, in recent years, a large number of municipalities have decided to take over the fee collection from operators and used property tax data for fee collection or found another way to ensure the registration of households in the the fee collection registry. Therefore, the number of households is much higher than the one indicated in the census of population and households of 2011, thus making it impossible to present real data on the situation on the ground.

On the other hand, in some other municipalities, such as: Suharekë/Suva Reka, Rahovec/Orahovac, Kaçanik/Kaçanik, Podujevë/Podujevo, etc., private companies licensed for waste collection operate, but were not contracted through public procurement procedures. Hence, the (billing) data reported by these companies were not calculated.

In the reporting year of 2019, the waste collection service coverage rate for households is 78.5%, marking an increase of 2.9% at national level compared to 2018.

Another category for which municipalities have reported on service coverage are businesses and institutions. However, it should be clarified that many municipalities have not managed to do a filtering on their databases between registered businesses and active ones i.e. those receiving waste collection service. So, the number of businesses may present all the businesses registered within the territory of the municipality and, consequently, the service coverage may be much lower than it appears in reality.

Based on these data, service coverage for businesses by the end of 2019 was 51%, while for institutions 85%.

The following definition was used to calculate the waste service coverage:

$$Cr = \frac{N_{\text{ef. sh}}}{N_{\text{p. ef.}}} \times 100\%$$

* Cr Coverage rate

* N s.h. – Number of served/billed households in December 2018/2019

* T n.h. – Total number of households, according to the KAS 2011 population census

Detailed data on municipal waste collection service coverage rate are provided in Annex 2 of the report.

Table 3. MW collection service coverage (2018 & 2019)

	REGION	General information				Waste collection service coverage			
		Number of inhabitants (KAS-2011)	Number of households (KAS-2011)	Number of active businesses in the municipality 2019	Number of institutions in the municipality 2019	Number of households receiving service (2018)	Number of households receiving service (2019)	Number of businesses receiving service (2019)	Number of institutions receiving service (2019)
R1	PRISTINA REGION	470,583.00	85,104.00	15.160	498	100.343	107.470	8.141	445
R2	MITROVICĚ/A REGION	206,734.00	34,616.00	9.249	355	28.725	32.302	1.439	139
R3	PEJA/PEĆ REGION	174,235.00	30,266.00	5.346	307	23.645	25.758	3.740	307
R4	PRIZREN REGION	387,828.00	60,651.00	6.726	305	50.499	57.750	6.043	345
R5	FERIZAJ/UROŠEVAC REGION	185,695.00	29,516.00	8.570	193	17.213	18.664	2.476	132
R6	GJILAN/GNJILANE REGION	188,188.00	32,503.00	5.556	294	19.690	18.011	1.918	278
R7	GJAKOVA/ĐAKOVICA REGION	140,659.00	22,960.00	1.455	120	13.821	16.648	2.782	118
KOSOVO		1,753,922.00	295,616.00	52.062	2.072	253.936	274.344	26.539	1.764

Table 4. MW collection service coverage rate (2018 & 2019)

	REGION	Waste collection service coverage rate				
		Household service coverage rate (2018)	Household service coverage rate (2019)	Household service coverage rate increase or decrease 2018 -2019 (% points)	Service coverage rate for businesses - 2019 points	Service coverage rate for institutions (2019)
R1	PRISTINA REGION	80.5%	85.2%	4.7%	53.7%	89.4%
R2	MITROVICĚ/A REGION	82.7%	83.2%	0.5%	14.4%	35.7%
R3	PEJA/PEĆ REGION	78.1%	85.1%	7.0%	70.0%	100.0%
R4	PRIZREN REGION	83.3%	95.2%	12.0%	89.8%	100.0%
R5	FERIZAJ/UROŠEVAC REGION	58.3%	63.2%	4.9%	28.9%	68.4%
R6	GJILAN/GNJILANE REGION	60.6%	55.4%	-5.2%	34.5%	100.0%
R7	GJAKOVA/ĐAKOVICA REGION	60.2%	72.5%	12.3%	100.0%	98.3%
KOSOVO		75.6%	78.5%	2.9%	51.0%	85.1%

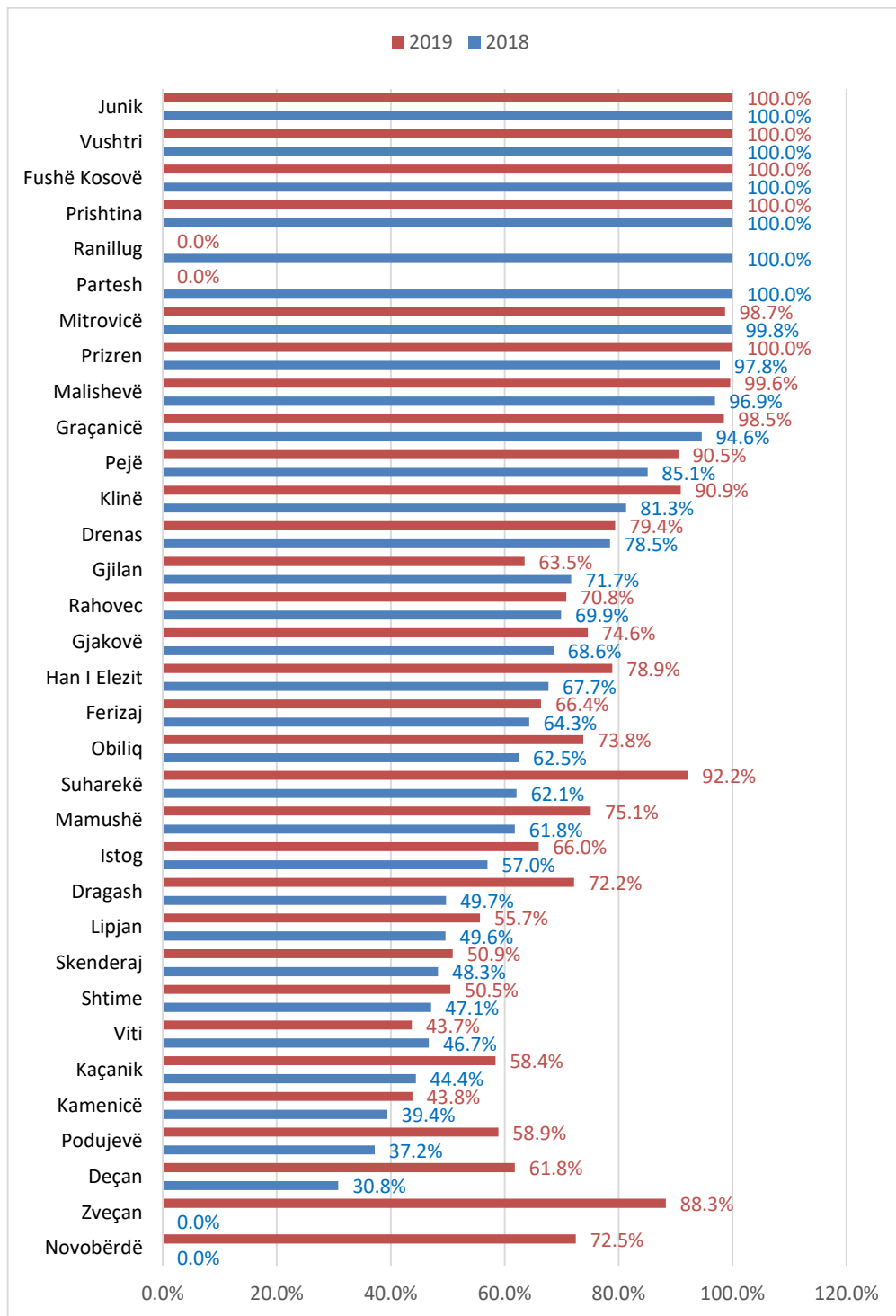


Figure 2. Household MW collection and transport service coverage rate by municipality (2018 & 2019)

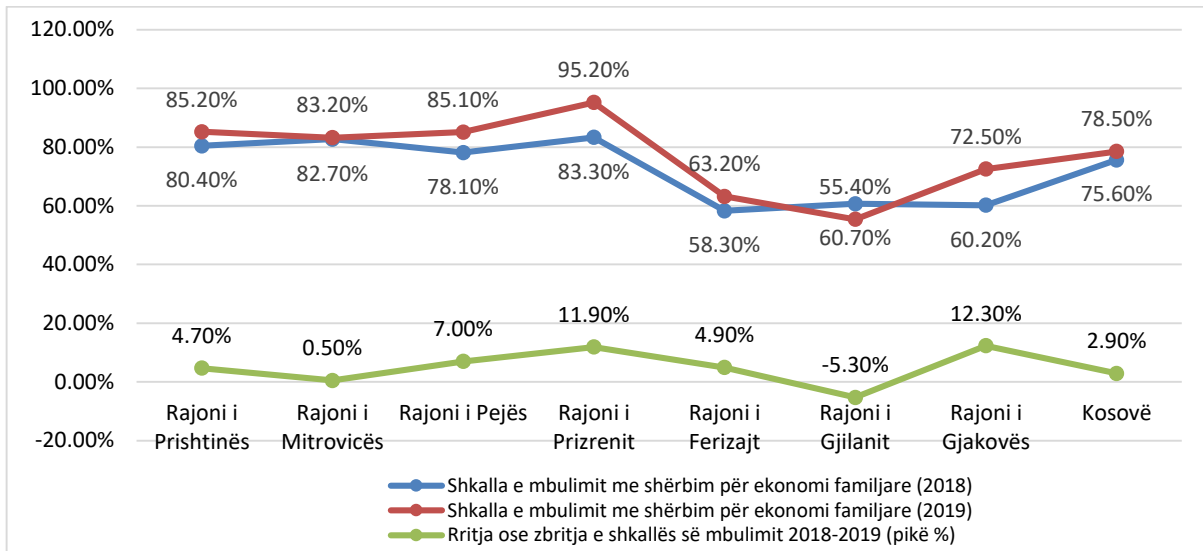
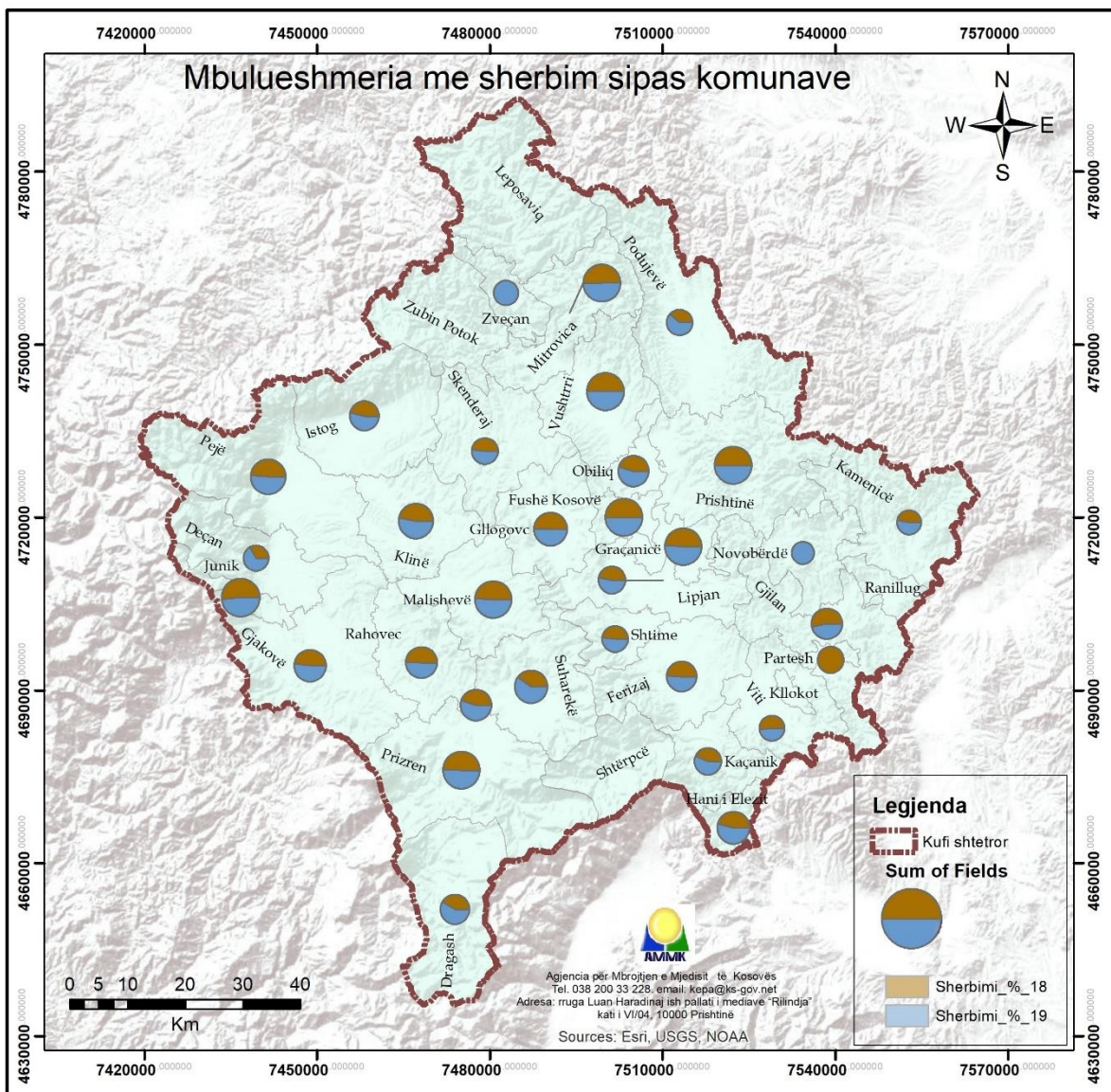


Figure 3. Household MW collection and transport service coverage by region and at national level (2018 & 2019)



Map 2. MW collection and transport service coverage rate by municipality (2018 & 2019)

3.2 Fee collection

Fee collection rate is a necessary indicator that is addressed in this report. The indicator helps us see the commitment of municipalities i.e. operators to expand the municipal waste collection service coverage in their territory.

In general, the waste collection service fee collection rate by the end of 2019 at national level is 90.4%, while in 2018 it was 76.64%, thus marking a significant increase of 13.76% in the fee collection rate.

It is important to note that operators could not make a distinction in fee collection from billing between the reporting year and previous years (old debts). Therefore, it should be understood that the current fee collection rate is lower than the one presented by the formula, and the increase in fee collection does not necessarily reflect an increase in the fee collection as per invoices issued in the reporting year.

Given this situation, it can be assumed that the current fee collection rate is about 10% lower than the one resulting from the formula. Therefore, it can be said that the real fee collection rate in the country is about 80%.

The data reported for 2019 indicate that 5 municipalities have reached a rate of over 100% in fee collection for the household waste collection service. Calculation was not limited to 100%, as the calculation of fee collection also includes customers' old debts. A 90% fee collection rate was reached by 9 municipalities.

If fee collection rate is measured at regional level, then it can be concluded that the Pejë/Peć Region has reached the highest fee collection rate of 98%, and the lowest fee collection rate is in Mitrovica Region with 76.62%.

Fee collection rate data were calculated by using the following formula:

$$Fcr = \frac{a.i.i.y}{a.i.c} \times 100\%$$

* Fcr- Fee collection rate

* A.i.i.y - Amount of invoices issued per year

* A.i.c - Amount of invoices collected in the respective year

It is important to clarify that it may turn out that the municipalities that have taken over the fee collection and expanded the client base based on the property tax list have seen a decrease in the fee collection rate. This is due to the change in the operator model and also because the number of invoices has increased significantly, and this is reflected in the formula as a decrease in the fee collection rate.

Detailed data on fee collection rate are provided in Annex 3 of the report.

Table 5. Billing for MW collection and transport service (2019)

		Billing for waste collection service in 2019 (€)			
	REGION	Billing for household service (2019)	Billing for business service (2019)	Billing for institution service (2019)	Billing for services for all categories (2019)
R1	PRISTINA REGION	€ 4,664,187.50	€ 776,626.21	€ 1,119,574.02	€ 6,560,387.73
R2	MITROVICĚ/A REGION	€ 1,368,982.64	€ 375,851.29	€ 795,837.17	€ 2,540,671.10
R3	PEJA/PEĆ REGION	€ 1,336,057.15	€ 431,153.78	€ 214,057.30	€ 1,981,268.23
R4	PRIZREN REGION	€ 2,300,505.00	€ 271,646.00	€ 74,368.00	€ 2,646,519.00
R5	FERIZAJ/UROŠEVA C REGION	€ 948,343.10	€ 350,543.62	€ 206,753.27	€ 1,505,639.99
R6	GJILAN/GNJILANE REGION	€ 1,092,628.15	€ 406,176.18	€ 117,610.11	€ 1,616,414.44
R7	GJAKOVA/ĐAKOVI CA REGION	€ 750,163.00	€ 286,707.04	€ 135,204.38	€ 1,172,074.42
KOSOVO		€ 12,460,866.54	€ 2,898,704.12	€ 2,663,404.25	€ 18,022,974.90

Table 6. MW collection and transport service fee collection (2019)

		Fee collection for waste collection service in 2019 (€)			
	REGION	Fee collection for household service (2019)	Fee collection for business service (2019)	Fee collection for institution service (2019)	Fee collection for services for all categories (2019)
R1	PRISTINA REGION	€ 4,854,411.29	€ 667,715.82	€ 500,338.16	€ 6,022,465.27
R2	MITROVICĚ/A REGION	€ 882,164.35	€ 332,004.17	€ 732,518.49	€ 1,946,687.01
R3	PEJA/PEĆ REGION	€ 1,277,673.11	€ 397,151.61	€ 276,421.69	€ 1,951,246.41
R4	PRIZREN REGION	€ 2,212,924.00	€ 276,421.69	€ 68,844.00	€ 2,522,865.00
R5	FERIZAJ/UROŠEVAC REGION	€ 815,689.71	€ 102,072.29	€ 82,622.98	€ 1,328,877.52
R6	GJILAN/GNJILANE REGION	€ 973,026.44	€ 297,489.41	€ 117,303.56	€ 1,387,819.41
R7	GJAKOVA/ĐAKOVICA REGION	€ 676,908.00	€ 253,414.90	€ 137,581.00	€ 1,067,903.90
KOSOVO		€ 11,692,796.90	€ 2,290,945.20	€ 1,915,629.88	€ 16,227,864.52

Table 7. MW collection and transport service fee collection rate (%) (2019)

Fee collection rate for waste collection service in 2019 (€)					
	REGION	Household service fee collection rate (2019)	Business service fee collection rate (2019)	Institution service fee collection rate (2019)	Service fee collection rate for all categories (2019)
R1	PRISTINA REGION	104.08%	85.98%	44.69%	91.80%
R2	MITROVICË/A REGION	64.44%	88.33%	92.04%	76.62%
R3	PEJA/PEĆ REGION	95.63%	92.11%	129.13%	98.48%
R4	PRIZREN REGION	96.19%	88.75%	92.57%	95.33%
R5	FERIZAJ/UROŠEVAC REGION	86.01%	29.12%	39.96%	88.26%
R6	GJILAN/GNJILANE REGION	89.05%	73.24%	99.74%	85.86%
R7	GJAKOVA/ĐAKOVICA REGION	90.23%	88.39%	101.76%	91.11%
KOSOVO		93.84%	79.03%	71.92%	90.04%

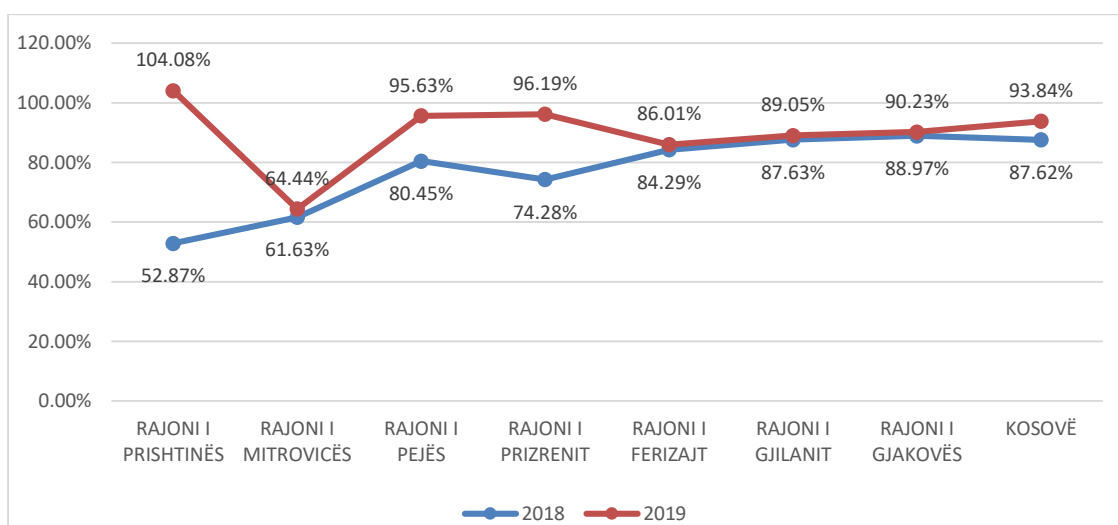


Figure 4. MW collection and transport service fee collection for households at regional and national level (2018 & 2019)

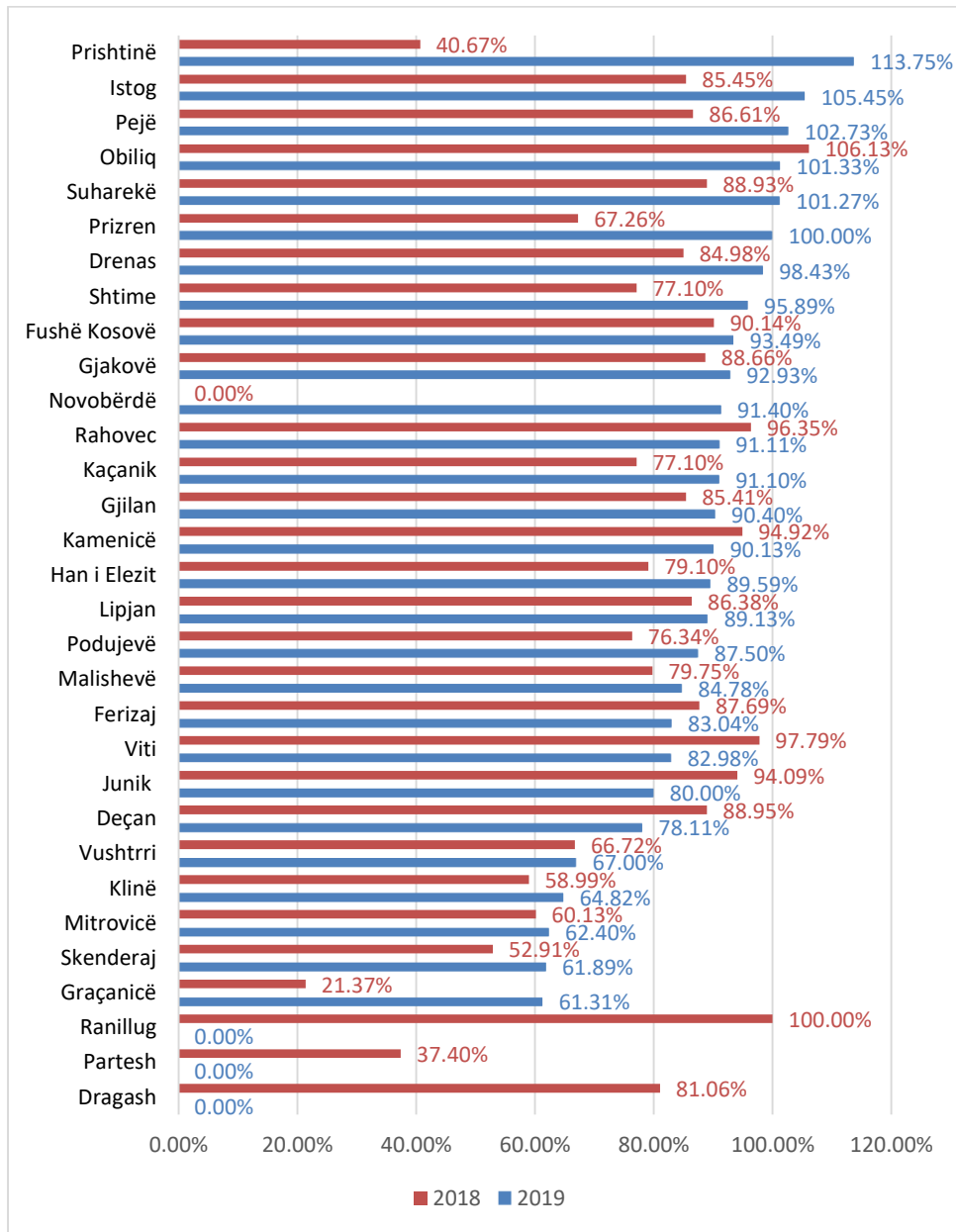
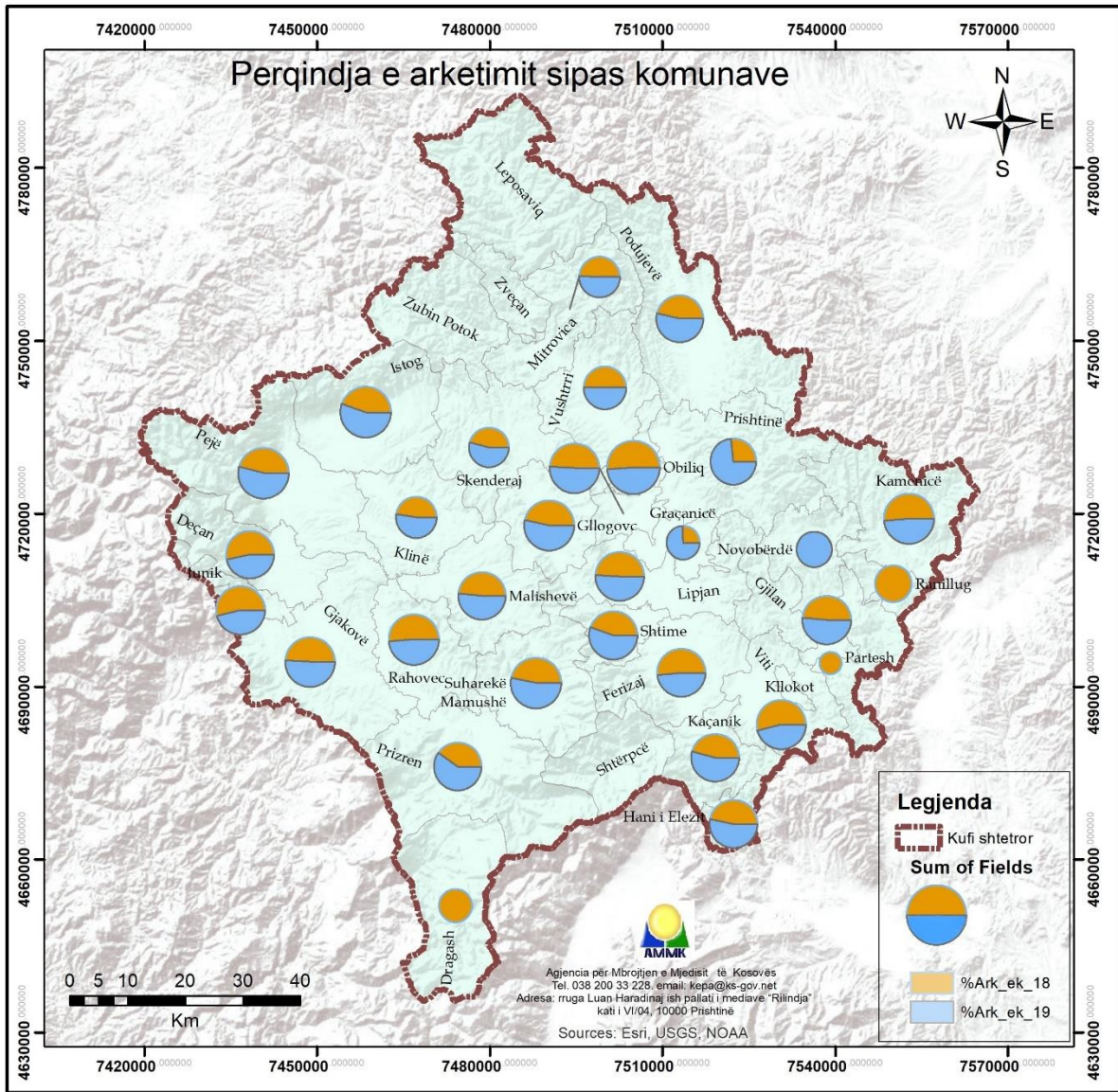


Figure 5. MW collection and transport service fee collection for households by municipality (2018 & 2019)



Map 3. MW waste collection and transport service fee collection rate (2018 & 2019)

3.3 *Illegal dumpsites*

The process of registration of illegal dumpsites in all Kosovo municipalities has taken place in June 2020.

Registered dumpsites are categorized by size into: large, medium and small dumpsites, based on the estimated volume.

Furthermore, categorization was also done according to the composition of the waste, such as: (a) municipal waste dumpsite; (b) construction and demolition waste dumpsite; (c) hazardous waste dumpsite; (d) bulky waste dumpsite; and (e) other waste dumpsite.

During this process, at Kosovo level, a total of 1490 illegal dumpsites of various sizes was recorded in 38 municipalities, with the category of large dumpsites prevailing at a rate of 43%.

If the number of illegal dumpsites is compared with the previous registration in March 2019 (when 2,529 illegal dumpsites were registered), it can be estimated that there is a significant decrease in their number by 1040 dumpsites.

Illegal dumpsites are mainly dominated by mixed waste (45%), followed by construction and demolition and municipal waste. The largest number of illegal dumpsites was registered in Gjilan/Gnjilane region, respectively 325 illegal dumpsites, and the least illegal dumpsites \ were registered in Gjakovë/Đakovica region, respectively 60 of those.

Detailed data on illegal dumpsites are provided in Annex 4 to the report.

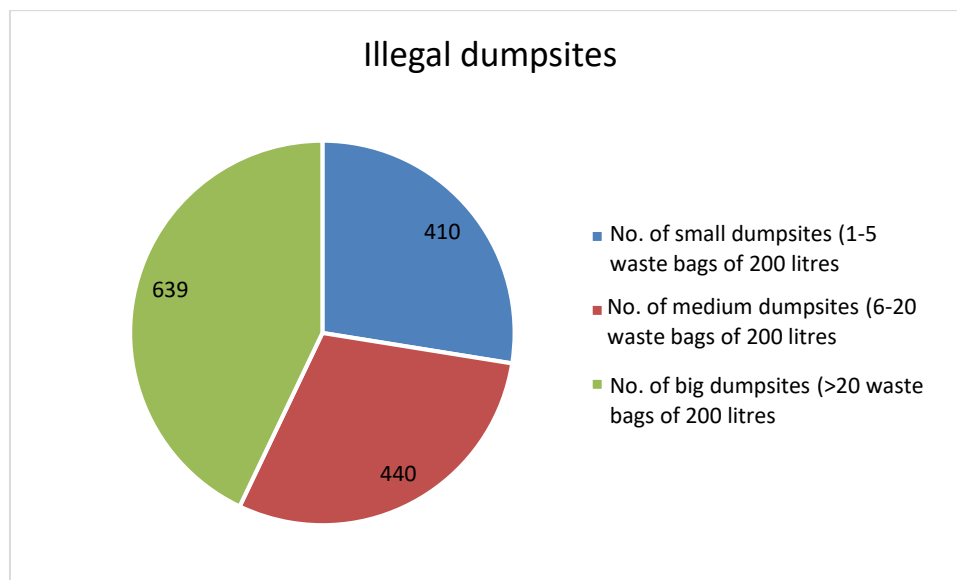


Figure 6. Number of illegal dumpsites by size (June 2020)

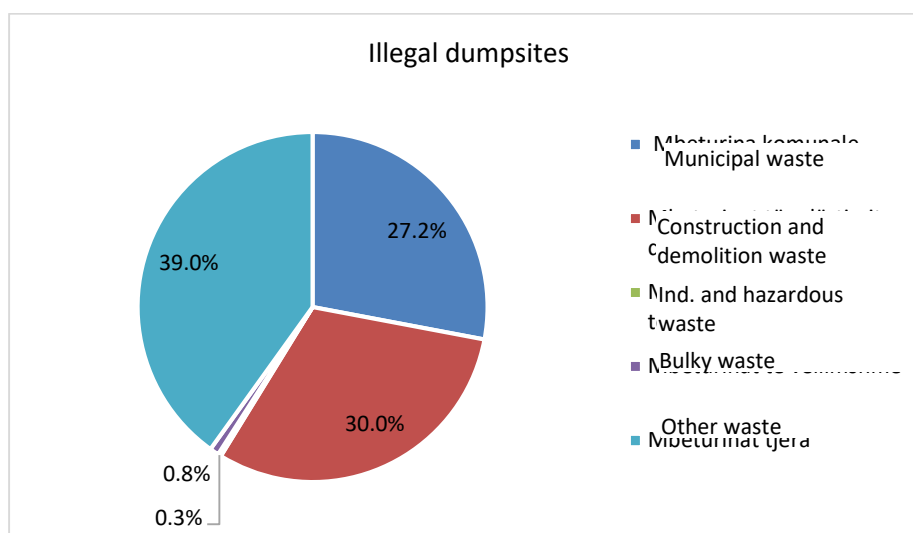


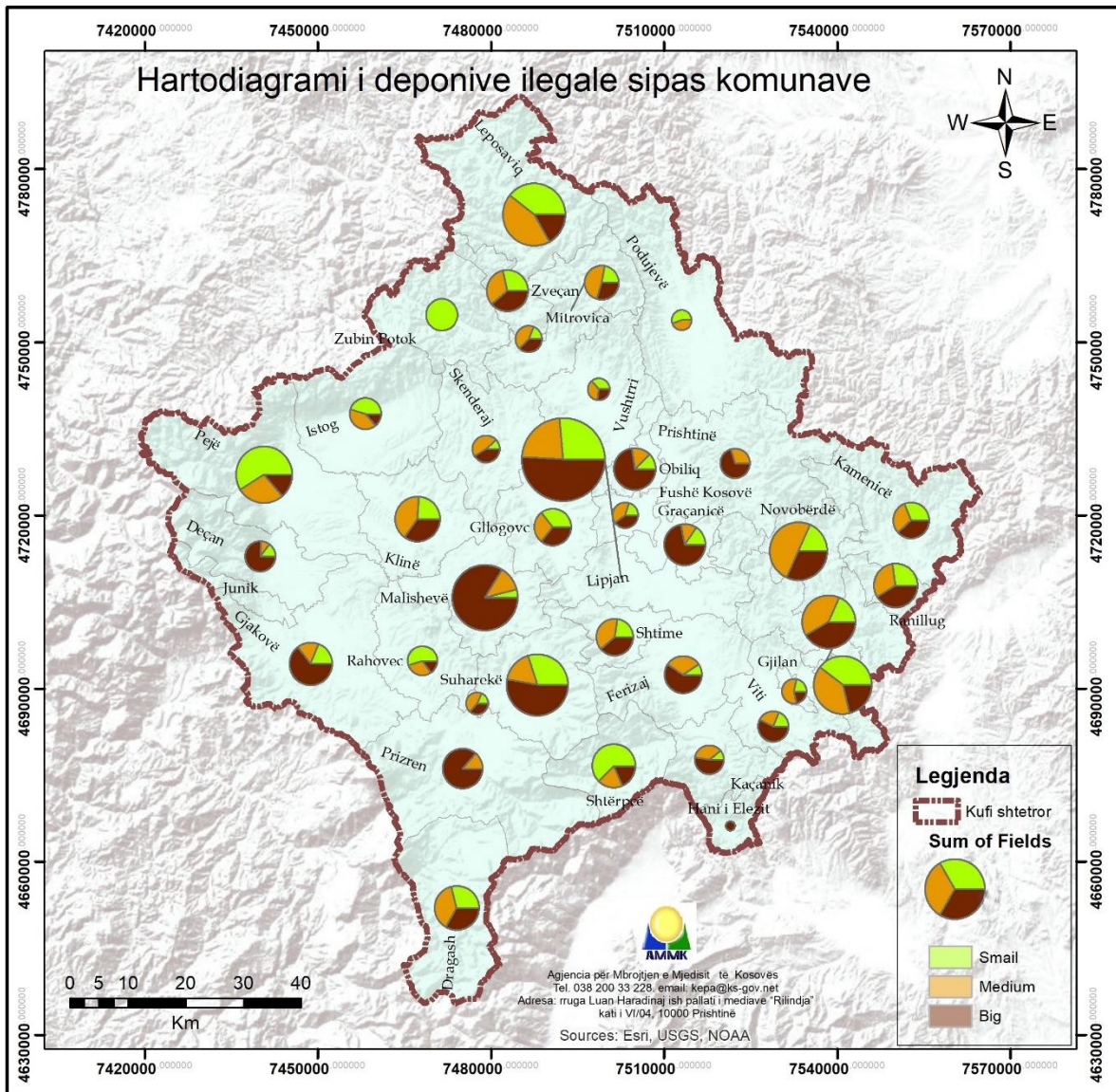
Figure 7. Illegal dumpsites by waste fraction (June 2020)

Table 8. Illegal dumpsites by size in regions (June 2020)

	REGION	Illegal dumpsites by size			Total Illegal dumpsites
		Small dumpsites (1-5 waste bags of 200 litres)	Medium dumpsites (6-20 waste bags of 200 litres)	Large dumpsites (> 20 waste bags of 200 litres)	
R1	PRISTINA REGION	72	72	169	313
R2	MITROVICĚ/A REGION	84	84	54	223
R3	PEJA/PEĆ REGION	64	48	29	141
R4	PRIZREN REGION	56	60	182	298
R5	FERIZAJ/UROŠEVAC REGION	39	37	51	127
R6	GJILAN/GNJILANE REGION	84	130	111	325
R7	GJAKOVA/ĐAKOVICA REGION	11	9	43	63
KOSOVO		410	440	639	1490

Table 9. Illegal dumpsites by fraction in regions (June 2020)

	REGION	Illegal dumpsites by fraction				
		Municipal waste	Construction and demolition waste	Indust. and hazardous waste	Bulky waste	Other waste
R1	PRISTINA REGION	27.0%	41.1%	0.0%	0.6%	31.3%
R2	MITROVICĚ/A REGION	46.4%	19.5%	1.2%	1.4%	31.5%
R3	PEJA/PEĆ REGION	46.3%	19.3%	0.3%	0.0%	34.0%
R4	PRIZREN REGION	8.2%	33.5%	0.4%	0.0%	57.9%
R5	FERIZAJ/UROŠEVAC REGION	27.3%	37.2%	0.0%	1.1%	34.3%
R6	GJILAN/GNJILANE REGION	28.8%	24.3%	0.0%	0.9%	46.1%
R7	GJAKOVA/ĐAKOVICA REGION	3.3%	18.3%	0.0%	0.0%	45.0%
KOSOVO		28.0%	30.0%	0.3%	0.8%	40.1%



Map 4. Illegal dumpsites by municipality (June 2020)

3.4 Waste separation at source - Recycling

No complete information on activities of separation at source and recycling was received in this reporting year.

Municipalities were required to report on the number of households that have access to waste separation at source infrastructure, including all households within a 250 m radius of a waste collection facility that provides separation of recyclable waste, households that are equipped with a composter and households within a radius of 5 km from a separated waste collection facility (if there are such facilities in the municipality).

Out of 36 municipalities that reported on waste management in 2018 and 2019, only 7 municipalities turned out to have provided access to infrastructure for separation at source. Such first steps towards circular economy were taken by the municipalities of: Prizren, Prishtinë/Priština, Fushë Kosovë/Kosovo Polje, Glllogoc/Glogovac, Mitrovicë/a, Vushtrri/Vučitrn and Rahovec/Orahovac.

For all these municipalities, the reported data were verified by planning documents and photographic proofs of locations, orthophotos, settlement lists etc.

It turns out that in some municipalities most households have access to infrastructure for separation at source, but in fact the figure is lower. As explained above, this is because the existing number of inhabitants, namely households like in Fushë Kosovë/Kosovo Polje, is higher than presented in the 2011 census, a number that was taken as a basis for the calculation of the percentage of households that have access to infrastructure for waste separation at source.

In general, based on the reported data, it turns out that the number of households that have had access to infrastructure for separation at source at national level in 2019 has increased by 3.4%, from 6.8% in 2018. Therefore, according to 2019 data, 10.2% of economic households at a country level have access to separation at source infrastructure. However, this percentage should be taken lightly for the reasons mentioned above.

Detailed data on separation at source are provided in Annex 5 of the report.

3.5 Compliance with waste management legal and planning framework

Within the legal framework covering the field of waste management, one should note the Law No. 04/L-060 on Waste, from which other bylaws and planning documents of national and local level derive, and which stipulates municipalities' duties and responsibilities for waste management within their territories. It also provides for a development framework for local and regional levels and take measures to accomplish the set goals and objectives.

Some of the obligations that derive from the legal basis, the fulfilment of which is key to enable municipalities to implement the law and waste management plans, involve:

1. Drafting and adoption of Regulation on Waste Management;
2. Drafting and adoption of Municipal Waste Management Plan (MWMP);
3. Employment of a full-time Waste Management Officer whose job description ensures that at least 50% of his/her responsibilities cover waste management;
4. Employment of an environmental inspector whose job ensures responsibilities for waste management;
5. Contracting licensed operators for the collection and transportation of municipal waste, by implementing procurement procedures;
6. Contracting licensed operators for the collection and transportation of waste from construction and demolition of construction sites, by implementing procurement procedures;
7. Setting service fees by going through the fee process for the collection, transportation and disposal of municipal waste, by calculating service costs, profiling clients and setting service fees;
8. Designation of a facility for the collection, treatment, and disposal of waste from the construction and demolition of buildings;
9. The organizational structure of the municipal inspectorate; and
10. Imposition of mandatory fines.

As it is known, municipalities have the responsibility to meet the legal duty to report within the stipulated deadline i.e. by 31 March of the next year for the previous reporting year. However for the reporting year of 2019, due to the emergency situation caused by the global COVID-19 pandemic, reporting was postponed for a month, until 30 April 30², by completing a questionnaire highlighting the requirements for relevant documentation that the municipality has managed to meet.

Based on these reports, and then on the verification of the data therein, an overview of the implementation of processes in compliance with waste management legal and planning framework was presented. In 2019, two reporting requirements, which were not requested from the municipalities in 2018, were added, namely: the organizational structure of the municipal inspectorate, and the requirement for the statement of mandatory fines imposed in 2019. It should be emphasized that in the comparison of results of processes implemented in 2018 and 2019, these two processes were not included. So, at national level, in 2019, the average implementation of processes is 61.5%, thus marking an increase of 4% compared with the previous year (see Table 10).

² The regular legal deadline for reporting, which is 31 March, was postponed for 31 May 2020, because of the situation with the Covid-2019 pandemic.

Table 10. Compliance with waste management legal and planning framework (2018 & 2019)

REGION	Year	1. Drafting and adoption of MWMP	Drafting and adoption of municipal waste management regulation,	3. WM Officer	4. Environmental Inspector	5. Contracting licensed operators for municipal waste collection	6. Contracting licensed operators for C&D waste collection	7. Setting service fees by going through the fee process	8. Designation of a facility for the collection, treatment and disposal of waste from the construction and demolition of buildings.	Number of implemented processes
PRISHTINË/PRIŠTINA	2018	100%	86%	100%	71%	100%	0%	100%	57%	77%
	2019	100%	100%	100%	71%	57%	0%	100%	71%	75%
MITROVICË/A	2018	100%	75%	75%	75%	75%	0%	75%	75%	69%
	2019	80%	60%	80%	80%	60%	0%	100%	60%	65%
PEJA	2018	100%	100%	100%	100%	100%	0%	67%	0%	71%
	2019	100%	100%	100%	100%	33%	0%	100%	33%	71%
Prizren	2018	50%	50%	67%	100%	67%	0%	0%	67%	50%
	2019	50%	50%	67%	100%	83%	0%	17%	67%	54%
FERIZAJ/UROŠEVAC	2018	100%	25%	50%	75%	75%	0%	0%	75%	50%
	2019	80%	60%	60%	80%	60%	0%	80%	80%	63%
GJILAN/GNJILANE	2018	50%	17%	17%	50%	17%	0%	0%	67%	27%
	2019	71%	43%	43%	57%	57%	0%	0%	43%	39%
GJAKOVË/ĐAKOVICA	2018	67%	100%	100%	100%	67%	0%	33%	100%	71%
	2019	100%	100%	100%	100%	67%	0%	67%	100%	79%
No. of municipalities that have implemented the process	2018	26	20	23	26	23	0	13	21	19
	2019	29	25	27	29	22	0	22	23	22
Average implementation of the process/es	2018	78.79%	60.61%	69.70%	78.79%	69.70%	0.00%	39.39%	63.64%	57.6%
	2019	80.56%	69.44%	75.00%	80.56%	61.11%	0.00%	61.11%	63.89%	61.5%

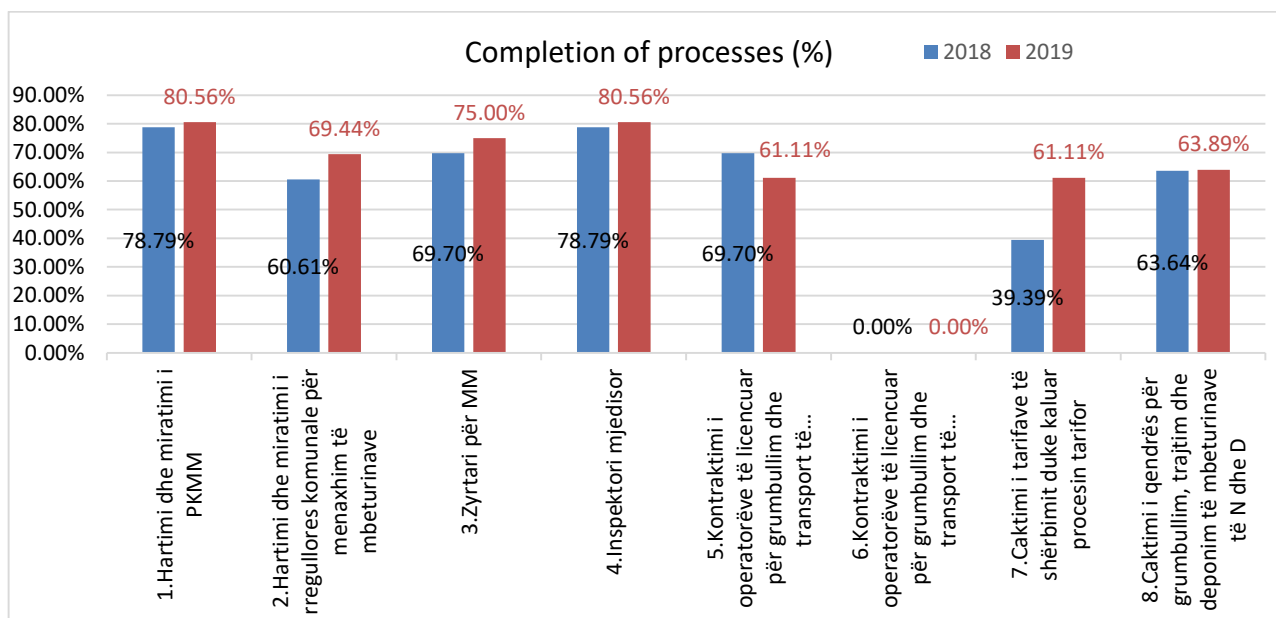


Figure 8. Level (%) of implementation of required processes at national level (2018 & 2019)

If viewed from the regional aspect, the highest process implementation rate was reached in Gjakovë/Đakovica region with 79%, followed by Prishtinë/Priština region with 75%, while Gjiilan/Gnjilane region has the lowest process implementation rate of 39%.

Like last year, in this reporting year as well, process no.6 was not implemented by municipalities. This is due to the inability to contract companies licensed to collect and transport construction and demolition waste. This phenomenon is apparently related to the lack of interest to license companies to carry out the construction and demolition waste collection activity. On the other hand, some municipalities have taken steps in managing this type of waste and contracted publicly owned companies operating in their territory, private construction companies or other companies.

Processes that have come out as the most implemented by the municipalities (29 out of 36 municipalities) are the following: process 1, drafting and adoption of the MWMP and process 4, environmental inspector.

Detailed data on process implementation rate are provided in Annex 6 to the report.

3.6 Implementation of municipal waste management plans

Out of 36 municipalities that have reported to KEPA, a total of 29 of them have reported to have met the legal requirement of drafting a municipal waste management plan, which is valid for the reporting year and adopted by the municipal assembly. Most of these municipalities have reported on the implementation of the MWMP, meeting the legal requirement of the Law on Waste (Article 58.2).

Compared with last year, more municipalities have reported correctly in this reporting year, referring to the Action Plan within the MWMP, relevant activities, relevant objective related to the activity, implementation rate and also explaining the reasons for the failure to implement an activity. However, there are again cases when the activities described in the report do not directly reflect the MWMP.

The requirement for municipalities to clearly report on the implementation rate of the MWMP as required in the standard form, which serves us to generate the implementation rate of the MWMP, posed a challenge during this year as well for most municipalities. Even in cases when municipalities have described the activities that they have carried out, they could not relate to the objective, the implementation rate, nor direct reference to the MWMP.

During this reporting year as well, municipalities are advised to develop a feasible MWMP in the coming years, where the planning of activities and resources (both human and financial) for the implementation of activities should correspond to the real opportunities that the municipality has. Municipal waste management officers should also be regularly monitored and report on the implementation of the MWMP.

3.7 Licensed waste management operators

In the reports provided to to KEPA, a significant number of municipalities have also reported on operators operating in their territories. Most municipalities have agreements on municipal waste collection operations with licensed public operators, but some municipalities also have waste collection agreements with private operators. For the reporting year of 2019, the data registered by the municipalities are for operators licensed for waste collection and transport.

Regional Waste Companies (RWCs) operate in 7 regions, thus covering over 26 municipalities with municipal waste collection and transport services.

In some municipalities such as: Deçan/Deçani, Zveçan/Zvečan and Han i Elezit/Elez Han, municipal companies operate, while the municipalities of Ranillug/Ranilug and Partesh/Parteš are served by municipal staff. Private companies also operate in many municipalities, but only in municipalities of Prizren, Mamushë/Mamuša and Junik these companies were contracted according to public procurement procedures.

These data will be part of operators' registry at national level. The registry will be updated every year with new data from the respective municipalities.

A clearer picture of the scope of municipal waste collection and transport operators is provided in the following table:

Table 11. Licensed MW management operators

	Municipalities	Licensed operators for municipal waste collection and transport that provide services in the municipality	
		Public operators	Private operators
1	Pristina	RWC Pastrimi	
2	Glllogoc/Glogovac		
3	Fushë Kosovë/Kosovo Polje		
4	Graçanicë/Gračanica		
5	Lipjan/Lipljan		
6	Obiliq/Obilić		
7	Podujevë/Podujevo		Natyra LLC
8	Mitrovicë/a	RWC Uniteti	
9	Skenderaj/Srbica		
10	Vushtrri/Vučitrn		
11	North Mitrovicë/a*		
12	Zveçan/Zvečan	Municipal public housing enterprise	
13	Zubin Potok*		
14	Leposaviq/Leposavić*		
15	Peja/Peć	RWC Ambienti	
16	Istog/Istok		
17	Klina		
18	Prizren	RWC Ekoregjioni	Is Company LLC and Sherbimi SOE
19	Suharekë/Suva Reka		Is Company LLC
20	Malishevë/o		
21	Rahovec/Orahovac		Eco-Drinia LLC
22	Dragash/Dragaš		
23	Mamushë/Mamuša		I&S Company LLC

24	Ferizaj/Uroševac		
25	Kaçanik/Kaçanik	RWC Pastrimi	Krasniqi STC
26	Shtime/Štimlje		
27	Han i Elezit/Elez Han	NPL Pastrimi JSC	
28	Shtërpçë/Štrpce*		
29	Gjilan/Gnjilane		
30	Kamenica		
31	Year	RWC Ekohigjiena	
32	Novobërdë/Novo Brdo		
33	Partesh/Parteš	Municipality of Partesh/Parteš	
34	Kllokot/Klokot*		
35	Ranillug/Ranilug	Municipality of Ranillug/Ranilug ³	
36	Gjakova/Đakovica	RWC CABRATI	
37	Deçan/Deçani	Hixhiena JSC - Bjeshkët e Deçanit [Deçan/Deçani Mountains]	
38	Junik		VB. TOFAJ LLC

* The municipality has reported to KEPA for the reporting year of 2019

3.8 Municipal waste management assets

Almost all reporting municipalities have also entered information on municipal waste management assets, although not all required data were entered or not all the requirements included in the form were met. Such data was requested from the local level to have an overview of the number, distribution and age of municipal waste management assets. Municipal assets involve all equipment owned by the municipality or the publicly owned enterprise (owned by the municipality).

According to the reported data, 36 municipalities in Kosovo have 258 waste collection and transport trucks and 34 transport tractors in use. The average age of trucks is about 14 years.

The Municipality of Prishtinë/Priština has the largest waste collection and transport fleet with a total of 40 trucks (with Pastrimi publicly owned company), followed by the Municipality of Prizren with a total of 24 trucks (with Ekoregjioni publicly owned company). Some municipalities, like: Mamushë/Mamuša, Novobërdë/Novo Brdo, Kllokot/Klokot, Ranillug/Ranilug and Junik only have one municipal transport truck/municipal waste truck.

Other equipment, municipal assets, the number and capacity of containers were also reported. Hence, 36 municipalities have reported that they have 67,160 containers starting with those of 120 litres up to those with a capacity of 15m³ which are used to transfer the waste to the landfill. The biggest number of containers was reported by the municipality of Glllogoc/Glogovac, with 7,939 containers, followed by the municipality of Fushë Kosovë/Kosovo Polje, with 7,832 containers. On the other hand, less than 100 containers were reported by the municipalities of: Dragash/Dragaš, Viti/Vitina, Partesh/Parteš, Istog/Istok, Shtërpçë/Štrpce.

A clearer overview of municipal waste management assets is provided in the following table.

³ The municipality of Ranillug/Ranilug has a department that deals with waste collection.

Table 12. Municipal assets for MW management

Municipal assets for waste collection and transport				
#	Municipalities	Number of trucks	Number of tractors	Number of containers
1	Pristina	40	2	1886
2	Glllogoc/Glogovac	7	0	7939
3	Fushë Kosovë/Kosovo Polje	7	0	7832
4	Gračanicë/Gračanica	3	0	3262
5	Lipjan/Lipljan	12	3	1783
6	Obiliq/Obilić	0	0	560
7	Podujevë/Podujevo	14	0	2051
8	Mitrovicë/a	15	3	262
9	Skenderaj/Srbica	9	2	3031
10	Vushtrri/Vučitrn	13	1	1013
11	North Mitrovicë/a *			
12	Zveçan/Zvečan	2	1	1301
13	Zubin Potok	4	0	374
14	Leposaviq/Leposavić*			
15	Peja/Peć	16	0	2139
16	Istog/Istok	0	0	0
17	Klinë/Klina	4	0	2860
18	Prizren	24	3	1033
19	Suharekë/Suva Reka	6	2	210
20	Malishevë/Mališevo	8	2	123
21	Rahovec/Orahovac	6	0	2635
22	Dragash/Dragaš	7	2	55
23	Mamushë/Mamuša	1	2	745
24	Ferizaj/Uroševac	13	1	1848
25	Kaçanik/Kaçanik	5	1	3428
26	Shtime/Štimlje	3	3	2163
27	Han i Elezit/Elez Han	2	1	1053
28	Shtërpcë/Štrpce	0	0	0
29	Gjilan/Gnjilane	9	1	4161
30	Kamenica	3	0	5892
31	Viti/Vitina	0	0	3
32	Novobërdë/Novo Brdo	1	0	474
33	Partesh/Parteš	0	0	1
34	Klllokot/Klokot	1	0	150
35	Ranillug/Ranilug	1	0	504
36	Gjakova/Đakovica	13	3	1605
37	Deçan/Dečani	8	1	3582
38	Junik	1	0	1202
TOTAL		258	34	67160

* The municipality has not submitted the report to KEPA for the reporting year of 2019

4.0 Findings and recommendations

The following summary presents the findings and recommendations about the current state of municipal waste management in Kosovo for the reporting year of 2019:

- About 90% of the amount of waste generated ends up in sanitary landfills, while the rest of generated waste ends up in non-sanitary landfills. Development policies should focus on preventing waste generation and disposal through treatment;
- Coverage with waste collection and transportation service is increasing year after year, from 57.7% in 2016, 70.9% in 2017, 75.6% in 2018 to 78.5% in 2019;
- Fee collection rate in Kosovo this reporting year has been difficult to estimate, due to the inclusion of old debts in the amount collected. But, it is assumed that the real fee collection rate for the service provided in 2019 is about 80%. Municipalities, namely operators, should clearly distinguish between the debts collected and the fee collection rate in the reporting year;
- Financial viability in the sector remains challenging;
- 756 fewer illegal dumpsites were recorded compared with last year or, expressed in percentage, there is a decrease of 33.65%. The presence of these dumpsites is mainly related to the lack of coverage with waste collection service throughout the country, insufficient awareness of and communication with citizens, lack of any strategy to implement legal obligations against polluters, etc. Therefore, concrete measures to prevent the creation of illegal dumpsites must be taken;
- Recycling remains challenging to implement. There are initiatives to provide access to separation at source for recyclable waste, mainly plastic, paper, cardboard, and aluminium, including organic waste. An in-depth analysis of the recycling potential is indispensable;
- The technical capacities of the municipalities, namely operators that provide waste collection and transport services, remain insufficient. Financial adjustments are required on a legal basis for the proper functioning of operators;
- Municipalities have made progress in implementing important processes that derive from the laws. Municipalities should renew their efforts to complete the stalled processes;
- The progress in the field of waste management is not balanced in all regions, due to some regions and municipalities having greater technical capacities and resources compared to other regions or municipalities. Therefore, central policies and donor support should be oriented towards ensuring a balanced development in this sector.

REFERENCES

- Kosovo Agency of Statistics (2011) "Kosovo 2011 Population, Household and Housing Census"
Law on Waste (No. 02/L-30),
Kosovo sanitary landfill management companies
Municipal waste management companies
Annual Waste Management Report, reporting year of 2019, municipality of Prishtinë/Priština
Annual Waste Management Report, reporting year of 2019, municipality of Gillogoc/Glogovac
Annual Waste Management Report, reporting year of 2019, municipality of Fushë Kosovë/Kosovo Polje
Annual Waste Management Report, reporting year of 2019, municipality of Graçanicë/Gračanica
Annual Waste Management Report, reporting year of 2019, municipality of Lipjan/Lipljan
Annual Waste Management Report, reporting year of 2019, municipality of Obiliq/Obilić
Annual Waste Management Report, reporting year of 2019, municipality of Podujevë/Podujevo
Annual Waste Management Report, reporting year of 2019, municipality of Mitrovicë/Mitrovica
Annual Waste Management Report, reporting year of 2019, municipality of Skenderaj/Srbica
Annual Waste Management Report, reporting year of 2019, municipality of Vushtrri/Vučitrn
Annual Waste Management Report, reporting year of 2019, municipality of Zveçan/Zvečan
Annual Waste Management Report, reporting year of 2019, municipality of Pejë/Peć
Annual Waste Management Report, reporting year of 2019, municipality of Istog/Istok
Annual Waste Management Report, reporting year of 2019, municipality of Klinë/Klina
Annual Waste Management Report, reporting year of 2019, municipality of Prizren
Annual Waste Management Report, reporting year of 2019, municipality of Suharekë/Suva Reka
Annual Waste Management Report, reporting year of 2019, municipality of Malishevë/Mališevo
Annual Waste Management Report, reporting year of 2019, municipality of Rahovec/Orahovac
Annual Waste Management Report, reporting year of 2019, municipality of Dragash/Dragaš
Annual Waste Management Report, reporting year of 2019, municipality of Mamushë/Mamuša
Annual Waste Management Report, reporting year of 2019, municipality of Rahovec/Orahovac
Annual Waste Management Report, reporting year of 2019, municipality of Kaçanik/Kaçanik
Annual Waste Management Report, reporting year of 2019, municipality of Shtime/Štimlje
Annual Waste Management Report, reporting year of 2019, municipality of Hani i Elezit/Elez Han
Annual Waste Management Report, reporting year of 2019, municipality of Gjilan/Gnjilane
Annual Waste Management Report, reporting year of 2019, municipality of Kamenicë/Kamenica
Annual Waste Management Report, reporting year of 2019, municipality of Viti/Vitina
Annual Waste Management Report, reporting year of 2019, municipality of Novobërdë/Novo Brdo
Annual Waste Management Report, reporting year of 2019, municipality of Partesh/Parteš
Annual Waste Management Report, reporting year of 2019, municipality of Ranillug/Ranilug
Annual Waste Management Report, reporting year of 2019, municipality of Gjakovë/Đakovica
Annual Waste Management Report, reporting year of 2019, municipality of Deçan/Dečani
Annual Waste Management Report, reporting year of 2019, municipality of Junik
Annual Waste Management Report, reporting year of 2019, municipality of Shtërpçë/Štrpce
Annual Waste Management Report, reporting year of 2019, municipality of Kllokot/Klokot
Annual Waste Management Report, reporting year of 2019, municipality of Zubin Potok

KOSOVO MUNICIPAL WASTE MANAGEMENT REPORT
REPORTING YEAR OF 2019

This report was prepared by the Directorate of Environmental Status Assessment of the Kosovo Environmental Protection Agency, with the support of the Deutsche Gesellschaft für Internationale Zusammenarbeit (GIZ) GmbH, on behalf of the German Government.

Prepared by: Armend Agushi

Contributors:

Afrim Berisha, Tafë Veselaj, Përparim Gashi, Vjollca Behluli (GIZ)

KEPA address:

Luan Haradinaj Street, former Rilindja press building, floor XV/04 Tel. +381 38 200 33
228, email: ammk@rks-gov.net; www.ammk-rks.net

Prishtina, 2021

ANNEXES:

- Annex 1.** Amount of municipal waste collected and generated in Kosovo.
- Annex 2.** Overview of coverage with the service of collection and transport of municipal waste in 2018 and 2019.
- Annex 3.** Overview of fee collection for the service of collection and transport of municipal waste in 2019
- Annex 4.** Illegal dumpsites in 2019/2020
- Annex 5.** Access to infrastructure for municipal waste separation at source in 2019
- Annex 6. (1)** Compliance with waste management legal and planning framework.
- Annex 6. (2)** Compliance with waste management legal and planning framework.

Annex 1. Amount of municipal waste collected and generated in Kosovo

	Municipalities RWC Region REGION	General and service data				Collected waste amount (2019)			Waste generation (2019)	
		Number of inhabitants (KAS-2011)	Number of inhabitants served	Number of households (KAS-2011)	Number of households served (12/2019)	Collected mixed municipal waste (ton/year)	of which bulky (ton/year)	Collected mixed municipal waste (kg/year)	Waste generation per capita (kg/year)	Waste generation per capita (kg/day)
1	Pristina	198.897	349.645	40.528	71.245	80,951.56	200.56	80,951,560.00	231.52	0.63
2	Drenas/Glogovac	58.531	46.473	8.786	6.976	7,467.00	0.00	7,467,000.00	160.67	0.44
3	Fushë Kosovë/Kosovo Polje	34.827	57.295	6.580	10.825	15,528.71	0.00	15,528,710.00	271.03	0.74
4	Gračanicë/Gračanica	10.675	10.516	2.421	2.385	3,272.25	0.00	3,272,250.00	311.16	0.85
5	Lipjan/Lipljan	57.605	32.069	9.497	5.287	10,359.60	0.00	10,359,600.00	323.04	0.89
6	Obiliq/Obiliq	21.549	15.893	3.852	2.841	6,340.80	0.00	6,340,800.00	398.96	1.09
7	Podujevë/Podujevo	88.499	52.092	13.440	7.911	15,886.49	0.00	15,886,490.00	304.97	0.84
	RWC Pastrimi	470.583	563.984	85.104	107.470	139,806.41	200.56	139,806,410.00	247.89	0.68
R1	PRISTINA REGION	470.583	563.984	85.104	107.470	139,806.41	200.56	139,806,410.00	247.89	0.68
8	Mitrovicë/Mitrovica	71.909	71.003	13.173	13.007	21.943	0.00	21,942,610.00	309.04	0.85
9	Skenderaj/Srbica	50.858	25.892	7.682	3.911	5.873	0.00	5,872,550.00	226.81	0.62
10	Vushtrri/Vuçitër	69.870	80.728	11.866	13.710	20.305	202.00	20,304,810.00	251.52	0.69
	RWC Uniteti	192.637	177.623	32.721	30.628	48,119.97	202.00	48,119,970.00	270.91	0.74
11	North Mitrovicë/a*									
12	Zveçan/Zvečan	7.481	6.609	1.895	1.674	2,429.70	0.00	2,429,700.00	367.66	1.01
13	Zubin Potok	6.616		1.696		3,456.00	0.00	0.00	0.00	0.00
14	Leposaviq/Leposavić*									
R2	MITROVICË/A REGION	206.734	184.232	36.312	32.302	54,005.67	202.00	50,549,670.00	274.38	0.75
15	Peja/Peć	96.450	87.281	17.682	16.001	35,316.00	0.00	35,316,000.00	404.63	1.11
16	Istog/Istok	39.289	25.925	6.741	4.448	11,529.00	0.00	11,529,000.00	444.71	1.22
17	Klinë/Klina	38.496	34.978	5.843	5.309	9,929.00	0.00	9,929,000.00	283.87	0.78
	RWC Ambienti	174.235	148.183	30.266	25.758	56,774.00	0.00	56,774,000.00	383.13	1.05
R3	PEJA/PEC REGION	174.235	148.183	30.266	25.758	56,774.00	0.00	56,774,000.00	383.13	1.05
18	Prizren	177.781	190.467	29.625	31.739	44,841.21	5,214.64	44,841,210.00	235.43	0.65
19	Suharekë/Suva Reka	59.722	55.059	9.145	8.431	14,364.06	0.00	14,364,060.00	260.88	0.71
20	Malishevë/Mališevo	54.613	54.375	6.879	6.849	9,368.00	0.00	9,368,000.00	172.29	0.47
21	Rahovec/Orahovac	56.208	39.772	8.221	5.817	8,093.00	0.00	8,093,000.00	203.49	0.56
22	Dragash/Dragaš	33.997	24.556	6.215	4.489	6,067.00	0.00	6,067,000.00	247.07	0.68
	RWC Ekoregjioni	382.321	364.228	60.085	57.325	82,733.27	5,214.64	82,733,270.00	227.15	0.62
23	Mamushë/Mamuša	5.507	4.135	566	425	743.77	0.00	743,770.00	179.87	0.49
R4	PRIZREN REGION	387.828	368.363	60.651	57.750	83,477.04	5,214.64	83,477,040.00	226.62	0.62
24	Ferizaj/Uroševac	108.610	72.073	18.359	12.183	22,751.00	0.00	22,751,000.00	315.66	0.86
25	Kaçanik/Kaçanik	33.409	15.852	5.547	2.632	3,350.40	0.00	3,350,400.00	211.35	0.58
26	Shtime/Štimlje	27.324	13.793	4.158	2.099	3,363.51	0.00	3,363,510.00	243.85	0.67
	RWC Pastrimi	169.343	101.719	28.064	16.914	29,464.91	0.00	29,464,910.00	289.67	0.79
27	Han i Elezit/Elez Han	9.403	7.415	1.452	1.145	1,693.77	0.00	1,693,770.00	228.43	0.63
28	Shtërpcë/Štrpce	6.949		1.485		0.00	0.00	0.00	0.00	0.00

R 5	FERIZAJ/UROŠEVAC REGION	185.695	109.134	31.001	18.059	31,158.68	0.00	31,158,680.00	285.51	0.78
29	Gjilan/Gnjilane	90.178	57.252	17.115	10.866	22,319.60	0.00	22,319,600.00	389.85	1.07
30	Kamenicë/Kamenica	36.085	15.808	6.419	2.812	4,104.92	0.00	4,104,920.00	259.67	0.71
31	Viti/Vitina	46.987	20.513	7.520	3.283	5,671.69	0.00	5,671,690.00	276.49	0.76
32	Novobërdë/Novo Brdo	6.729	4.876	1.449	1.050	1,815.00	0.00	1,815,000.00	372.22	1.02
RWC Ekohigijena		179.979	98.449	32.503	18.011	33,911.21	0.00	33,911,210.00	344.45	0.94
33	Partesh/Partesh	1.787		418		0.00	0.00	0.00	0.00	0.00
34	Klllokot/Klllokot	2.556		510		0.00	0.00	0.00	0.00	0.00
35	Ranillug/Ranillug	3.866		956		1,171.00	0.00	0.00	0.00	0.00
R 6	GJILAN/GNJILANE REGION	188.188	98.449	34.387	18.011	35,082.21	0.00	33,911,210.00	344.45	0.94
36	Gjakova/Đakovica	94.556	70.527	16.303	12.160	17,184.96	0.00	17,184,960.00	243.67	0.67
RWC CABRATI		94.556	70.527	16.303	12.160	17,184.96	0.00	17,184,960.00	243.67	0.67
37	Deçan/Deçani	40.019	24.731	5.887	3.638	5,743.00	0.00	5,743,000.00	232.22	0.64
38	Junik	6.084	6.716	770	850	538.80	0.00	538,800.00	80.23	0.22
R 7	GJAKOVA/ĐAKOVIC A REGION	140.659	101.974	22.960	16.648	23,466.76	0.00	23,466,760.00	230.13	0.63
KOSOVO		1,753,922	1,574,319	300.681	275.998	423,770.77	5,617.20	423,770,770.00	269.18	0.74

* The Municipality has not reported to KEPA

- Annex 1 presents the data regarding the amount of municipal waste collected and generated in Kosovo;
- The results in the table are obtained from processing KAS data and the data reported by municipalities;
- Some municipalities have not provided complete data, either on the number of inhabitants served, or on the amount of waste collected, so, in these cases, it was possible to calculate the amount of waste generated, and the results are zero.

Annex 2. Overview of municipal waste collection and transportation service coverage in 2018 and 2019

	Municipalities RWC Region REGION	General information				Coverage with waste collection services			
		Number of inhabitants (KAS-2011)	Number of households (KAS-2011)	Number of active businesses in the municipality 2019	Number of institutions in the municipality 2019	Number of households served (2018)	Number of households served (2019)	Number of businesses receiving service (2019)	Number of institutions receiving service (2019)
1	Pristina	198,897.00	40,528.00	5.790	143	69.587	71.245	5.790	152
2	Drenas/Glogovac	58,531.00	8,786.00	1.570	71	6.895	6.976	547	65
3	Fushë Kosovë/Kosovo Polje	34,827.00	6,580.00	1.022	61	9.458	10.825	64	61
4	Gračanicë/Gračanica	10,675.00	2,421.00			2.291	2.385		
5	Lipjan/Lipljan	57,605.00	9,497.00	3.063	96	4.713	5.287	565	49
6	Obiliq/Obilić	21,549.00	3,852.00	438	30	2.406	2.841	303	30
7	Podujevë/Podujevo	88,499.00	13,440.00	3.277	97	4.993	7.911	872	88
	RWC Pastrimi	470,583.00	85,104.00	15.160	498	100.343	107.470	8.141	445
R1	PRISTINA REGION	470,583.00	85,104.00	15.160	498	100.343	107.470	8.141	445
8	Mitrovicë/Mitrovica	71,909.00	13,173.00	7.360	94	13.148	13.007		
9	Skenderaj/Srbica	50,858.00	7,682.00	564	78	3.711	3.911	418	68
10	Vushtrri/Vučitrn	69,870.00	11,866.00	1.205	164	11.866	13.710	901	52
	RWC Uniteti	192,637.00	32,721.00	9.129	336	28.725	30.628	1.319	120
11	North Mitrovicë/a								
12	Zvečan/Zvečan	7,481.00	1,895.00	120	19		1.674	120	19
13	Zubin Potok	6,616.00							
14	Leposaviq/Leposavić								
R2	MITROVICË/A REGION	206,734.00	34,616.00	9.249	355	28.725	32.302	1.439	139
15	Peja/Peć	96,450.00	17,682.00	2.534	187	15.053	16.001	2.512	187
16	Istog/Istok	39,289.00	6,741.00	612	50	3.842	4.448	628	50
17	Klinë/Klina	38,496.00	5,843.00	2.200	70	4.750	5.309	600	70
	RWC Ambienti	174,235.00	30,266.00	5.346	307	23.645	25.758	3.740	307
R3	PEJA/PEĆ REGION	174,235.00	30,266.00	5.346	307	23.645	25.758	3.740	307
18	Prizren	177,781.00	29,625.00	3.716	134	28.972	31.739	3.716	134
19	Suharekë/Suva Reka	59,722.00	9,145.00	1.909	64	5.676	8.431	682	64
20	Malishevë/o	54,613.00	6,879.00	597	69	6.663	6.849	630	67
21	Rahovec/Orahovac	56,208.00	8,221.00			5.750	5.817	718	41
22	Dragash/Dragaš	33,997.00	6,215.00	428	33	3.088	4.489	278	33

RWC Ekoregjioni		382,321.00	60,085.00	6.650	300	50.149	57.325	6.024	339
23	Mamushë/Mamuša	5,507.00	566.00	76	5	350	425	19	6
R4	PRIZREN REGION	387,828.00	60,651.00	6.726	305	50.499	57.750	6.043	345
24	Ferizaj/Uroševac	108,610.00	18,359.00	8.000	81	11.812	12.183	1.850	61
25	Kaçanik/Kaçanik	33,409.00	5,547.00		71	2.461	3.237	257	34
26	Shtëmë/Štimlje	27,324.00	4,158.00	350	32	1.957	2.099	298	28
RWC Pastrimi		169,343.00	28,064.00	8.350	184	16.230	17.519	2.405	123
27	Han i Elezit/Elez Han	9,403.00	1,452.00	220	9	983	1.145	71	9
28	Shtërpçë/Štrpce	6.949							
R5	FERIZAJ/UROŠEVAC REGION	185,695.00	29,516.00	8.570	193	17.213	18.664	2.476	132
29	Gjilan/Gnjilane	90,178.00	17,115.00	4.823	129	12.275	10.866	1.073	131
30	Kamenicë/Kamenica	36,085.00	6,419.00	645	79	2.527	2.812	428	68
31	Viti/Vitina	46,987.00	7,520.00		40	3.514	3.283	356	49
32	Novobërdë/Novo Brdo	6.729	1.449	88	46		1.050	61	30
RWC Ekohigjiena		179,979.00	32,503.00	5.556	294	18.316	18.011	1.918	278
33	Partesh/Parteš	1,787.00				418			
34	Kllokot/Klokot	2,556.00							
35	Ranillug/Ranilug	3,866.00				956			
R6	GJILAN/GNJILANE REGION	188,188.00	32,503.00	5.556	294	19.690	18.011	1.918	278
36	Gjakova/Đakovica	94,556.00	16,303.00	0	79	11.176	12.160	2.327	79
RWC CABRATI		94,556.00	16,303.00	0.00	79.00	11.176	12.160	2.327	79
37	Deçan/Dečani	40,019.00	5,887.00	1.353	33	1.815	3.638	353	31
38	Junik	6,084.00	770.00	102	8	830	850	102	8
R7	GJAKOVA/ĐAKOVICA REGION	140,659.00	22,960.00	1.455	120	13.821	16.648	2.782	118
KOSOVO		1,753,922.0	295,616.0	52.062	2.072	253.936	276.603	26.539	1.764

		Waste collection service coverage rate				
	Municipalities RWC Region REGION	Household service coverage rate (2018)	Household service coverage rate (2019)	Household service coverage rate increase or decrease 2018 - 2019 (% points)	Service coverage rate for businesses - 2019 points	Service coverage rate for institutions (2019)
1	Pristina	100.0%	100.0%	0%	100.0%	100.0%
2	Glogoc/Glogovac	78.5%	79.4%	1%	34.8%	91.5%
3	Fushë Kosovë/Kosovo Polje	100.0%	100.0%	0%	6.3%	100.0%
4	Gračanicë/Gračanica	94.6%	98.5%	4%	0.0%	0.0%
5	Lipjan/Lipljan	49.6%	55.7%	6%	18.4%	51.0%
6	Obiliq/Obilić	62.5%	73.8%	11%	69.2%	100.0%
7	Podujevë/Podujevo	37.2%	58.9%	22%	26.6%	90.7%
RWC Pastrimi		80.5%	85.2%	4.7%	53.7%	89.4%
R 1	PRISTINA REGION	80.5%	85.2%	4.7%	53.7%	89.4%
8	Mitrovicë/Mitrovica	99.8%	98.7%	-1%	0.0%	0.0%
9	Skenderaj/Srbica	48.3%	50.9%	3%	74.1%	87.2%
10	Vushtrri/Vučitrn	100.0%	100.0%	0%	74.8%	31.7%
RWC Uniteti		82.7%	83.2%	0.5%	14.4%	35.7%
11	North Mitrovicë/a*					
12	Zveçan/Zvečan	0.0%	88.3%	88%	100.0%	100.0%
13	Zubin Potok	0.0%	0.0%	0.0%	0.0%	0.0%
14	Leposaviq/Leposavić*					
R 2	MITROVICË/A REGION	82.7%	83.2%	0.5%	14.4%	35.7%
15	Pejë/Peć	85.1%	90.5%	5%	99.1%	100.0%
16	Istog/Istok	57.0%	66.0%	9%	100.0%	100.0%
17	Klinë/Klina	81.3%	90.9%	10%	27.3%	100.0%
RWC Ambienti		78.1%	85.1%	7.0%	70.0%	100.0%

R 3	PEJA/PEĆ REGION	78.1%	85.1%	7.0%	70.0%	100.0%
18	Prizren	97.8%	100.0%	2%	100.0%	100.0%
19	Suharekë/Suva Reka	62.1%	92.2%	30%	35.7%	100.0%
20	Malishevë/Mališevo	96.9%	99.6%	3%		97.1%
21	Rahovec/Orahovac	69.9%	70.8%	1%	0.0%	0.0%
22	Dragash/Dragaš	49.7%	72.2%	23%	65.0%	100.0%
	RWC Ekoregjioni	83.5%	95.4%	11.9%	90.6%	113.0%
23	Mamushë/Mamuša	61.8%	75.1%	13%	25.0%	100.0%
R 4	PRIZREN REGION	83.3%	95.2%	12.0%	89.8%	100.0%
24	Ferizaj/Uroševac	64.3%	66.4%	2%	23.1%	
25	Kaçanik/Kaçanik	44.4%	58.4%	14%	0.0%	47.9%
26	Shtime/Štimlje	47.1%	50.5%	3%	85.1%	87.5%
	RWC Pastrimi	57.8%	62.4%	4.6%	28.8%	66.8%
27	Han i Elezit/Elez Han	67.7%	78.9%	11%	32.3%	100.0%
28	Shtërpçë/Štrpce	0.0%	0.0%	0.0%	0.0%	0.0%
R 5	FERIZAJ/UROŠEVAC REGION	58.3%	63.2%	4.9%	28.9%	68.4%
29	Gjilan/Gnjilane	71.7%	63.5%	-8%	22.2%	100.0%
30	Kamenicë/Kamenica	39.4%	43.8%	4%	66.4%	86.1%
31	Viti/Vitina	46.7%	43.7%	-3%	0.0%	100.0%
32	Novobërdë/Novo Brdo	0.0%	72.5%	72%	69.3%	65.2%
	RWC Ekohigjiena	59.0%	55.4%	-3.6%	34.5%	100.0%
33	Partesh/Parteš	100.0%	0.0%	0.0%	0.0%	0.0%
34	Kllokot/Klokot	00	0.0%	0.0%	0.0%	0.0%
35	Ranillug/Ranilug	0.0%	0.0%	0.0%	0.0%	0.0%
R 6	GJILAN/GNJILANE REGION	60.6%	55.4%	-5.2%	34.5%	100.0%
36	Gjakova/Đakovica	68.6%	74.6%	0.0%	0.0%	100.0%
	RWC CABRATI	68.6%	74.6%	6.0%	0.0%	100.0%

37	Deçan/Dečani	30.8%	61.8%	31%	26.1%	93.9%
38	Junik	107.8%	100.0%	-8%	100.0%	100.0%
R 7	GJAKOVA/DAKOVIC A REGION	60.2%	72.5%	12.3%	100.0%	98.3%
KOSOVO		75.6%	78.5%	2.9%	51.0%	85.1%

* The Municipality has not reported to KEPA;

- Annex 2 i.e. this table presents the general data on coverage with municipal waste collection and transport service for 2018 and 2019;
- Municipalities have reported on waste collection and transportation service coverage for households, institutions and businesses;
- Some municipalities have not provided complete data on service coverage, especially for institutions and businesses, so during the processing of the data some difficulties were come across in calculating service coverage for these categories;
- In general, the data reported by municipalities based on the findings during the verification process have changed, so we recommend that the data are based on operator's reports in the coming years;
- In some municipalities, the coverage rate turns out to be above 100%, but was registered as 100%, and this is so for several reasons, like: the number of households in the municipality is significantly higher than in the 2011 census, or because the municipality has updated the list of clients, using the property tax registry, which may be more extensive than the real one;
- In calculating the coverage rate in several municipalities, in order not to distort the formula (for the reasons given above), when the number of households served was greater than the existing number of households, the existing number of households was read;

Annex 3. Overview of fee collection rate for the service of collection and transport of municipal waste in 2019

		Billing for waste collection service in 2019 €				Fee collection for waste collection service in 2019 €			
Municipalities RWC Region REGION		Billing for household service (2019)	Billing for business service (2019)	Billing for institution service (2019)	Billing for services for all categories (2019)	Fee collection for household service (2019)	Fee collection for business service (2019)	Fee collection for institution service (2019)	Fee collection for services for all categories (2019)
1	Pristina	€ 2,691,796.00	€ 531,186.00	€ 991,866.00	€ 4,214,848.00	€ 3,061,828.00	€ 484,746.00	€ 269,736.00	€ 3,816,310.00
2	Glllogoc/Glogovac	€ 369,711.40	€ 38,292.42	€ 5,335.26	€ 413,339.08	€ 363,894.32	€ 34,314.35	€ 5,677.11	€ 403,885.78
3	Fushë Kosovë/Kosovo Polje	€ 590,921.60	€ 58,220.97	€ 18,192.99	€ 667,335.56	€ 552,465.85	€ 37,787.19	€ 30,590.54	€ 620,843.58
4	Graçanicë/Gračanica	€ 134,528.50	€ 12,504.31	€ 3,541.26	€ 150,574.07	€ 82,484.02	€ 6,650.00	€ 98.97	€ 89,232.99
5	Lipjan/Lipljan	€ 293,482.40	€ 41,112.49	€ 1,899.78	€ 336,494.67	€ 261,580.00	€ 21,761.00	€ 5,641.52	€ 288,982.52
6	Obiliq/Obilić	€ 154,489.00	€ 13,878.05	€ 62,685.00	€ 231,052.05	€ 156,543.50	€ 12,867.77	€ 125,933.17	€ 295,344.44
7	Podujevë/Podujevo	€ 429,258.60	€ 81,431.97	€ 36,053.73	€ 546,744.30	€ 375,615.60	€ 69,589.51	€ 62,660.85	€ 507,865.96
RWC Pastrimi		€ 4,664,187.50	€ 776,626.21	€ 1,119,574.02	€ 6,560,387.73	€ 4,854,411.29	€ 667,715.82	€ 500,338.16	€ 6,022,465.27
R1	PRISHTINË/PRIŠTINA REGION	€ 4,664,187.50	€ 776,626.21	€ 1,119,574.02	€ 6,560,387.73	€ 4,854,411.29	€ 667,715.82	€ 500,338.16	€ 6,022,465.27
8	Mitrovicë/Mitrovica	€ 567,494.40	€ 249,422.00	€ 564,383.00	€ 1,381,299.40	€ 354,097.68	€ 221,801.00	€ 516,852.00	€ 1,092,750.68
9	Skenderaj/Srbica	€ 174,963.44	€ 67,679.29	€ 45,390.63	€ 288,033.36	€ 108,289.04	€ 58,874.17	€ 56,482.39	€ 223,645.60
10	Vushtrri/Vučitrn	€ 626,524.80	€ 58,750.00	€ 186,063.54	€ 871,338.34	€ 419,777.63	€ 51,329.00	€ 159,184.10	€ 630,290.73
RWC Uniteti		€ 1,368,982.64	€ 375,851.29	€ 795,837.17	€ 2,540,671.10	€ 882,164.35	€ 332,004.17	€ 732,518.49	€ 1,946,687.01
11	North Mitrovica								
12	Zveçan/Zvečan	€ 0.00	€ 0.00	€ 0.00	€ 0.00	€ 0.00	€ 0.00	€ 0.00	€ 0.00
13	Zubin Potok	€ 0.00	€ 0.00	€ 0.00	€ 0.00	€ 0.00	€ 0.00	€ 0.00	€ 0.00
14	Leposaviq/Leposavić								
R2	R. OF MITROVICË/MITROVICA	€ 1,368,982.64	€ 375,851.29	€ 795,837.17	€ 2,540,671.10	€ 882,164.35	€ 332,004.17	€ 732,518.49	€ 1,946,687.01
15	Peja/Peć	€ 833,696.00	€ 316,198.00	€ 113,188.00	€ 1,263,082.00	€ 856,420.00	€ 267,825.00	€ 152,149.00	€ 1,276,394.00
16	Istog/Istok	€ 235,318.65	€ 62,704.93	€ 65,516.75	€ 363,540.33	€ 248,149.91	€ 63,237.26	€ 65,348.64	€ 376,735.81
17	Klinë/Klina	€ 267,042.50	€ 52,250.85	€ 35,352.55	€ 354,645.90	€ 173,103.20	€ 66,089.35	€ 58,924.05	€ 298,116.60
RWC Ambienti		€ 1,336,057.15	€ 431,153.78	€ 214,057.30	€ 1,981,268.23	€ 1,277,673.11	€ 397,151.61	€ 276,421.69	€ 1,951,246.41

R3	R. OF PEJË/PEÇ	€ 1,336,057.15	€ 431,153.78	€ 214,057.30	€ 1,981,268.23	€ 1,277,673.11	€ 397,151.61	€ 276,421.69	€ 1,951,246.41
18	Prizren	€ 1,447,296.00	€ 0.00	€ 0.00	€ 1,447,296.00	€ 1,447,296.00	€ 0.00	€ 0.00	€ 1,447,296.00
19	Suharekë/Suva Reka	€ 249,308.00	€ 74,562.00	€ 19,519.00	€ 343,389.00	€ 252,466.00	€ 71,640.00	€ 24,840.00	€ 348,946.00
20	Malishevë/Mališevo	€ 332,801.00	€ 75,438.00	€ 52,548.00	€ 460,787.00	€ 282,158.00	€ 63,778.00	€ 26,763.00	€ 372,699.00
21	Rahovec/Orahovac	€ 253,550.00	€ 121,646.00	€ 2,301.00	€ 377,497.00	€ 231,004.00	€ 105,679.00	€ 17,241.00	€ 353,924.00
22	Dragash/Dragaš	€ 0.00	€ 0.00	€ 0.00	€ 0.00	€ 0.00	€ 0.00	€ 0.00	€ 0.00
RWC Ekoregjioni		€ 2,282,955.00	€ 271,646.00	€ 74,368.00	€ 2,628,969.00	€ 2,212,924.00	€ 276,421.69	€ 68,844.00	€ 2,522,865.00
23	Mamushë/Mamuša	€ 17,550.00	€ 0.00	€ 0.00	€ 17,550.00	€ 0.00	€ 0.00	€ 0.00	€ 0.00
R4	R. OF PRIZREN	€ 2,300,505.00	€ 271,646.00	€ 74,368.00	€ 2,646,519.00	€ 2,212,924.00	€ 276,421.69	€ 68,844.00	€ 2,522,865.00
24	Ferizaj/Uroševac	€ 648,844.00	€ 255,458.70	€ 143,504.69	€ 1,047,807.39	€ 538,818.52	€ 216,444.44	€ 151,687.96	€ 906,950.92
25	Kaçanik/Kaçanik	€ 125,763.00	€ 28,284.00	€ 28,354.81	€ 182,401.81	€ 114,564.39	€ 19,549.07	€ 34,112.04	€ 168,225.50
26	Shtime/Štimlje	€ 105,756.10	€ 39,406.92	€ 24,059.77	€ 169,222.79	€ 101,406.80	€ 40,178.35	€ 30,766.95	€ 172,352.10
RWC Pastrimi		€ 880,363.10	€ 323,149.62	€ 195,919.27	€ 1,399,431.99	€ 754,789.71	€ 92,057.29	€ 72,188.98	€ 1,247,528.52
27	Han i Elezit/Elez Han	€ 67,980.00	€ 27,394.00	€ 10,834.00	€ 106,208.00	€ 60,900.00	€ 10,015.00	€ 10,434.00	€ 81,349.00
28	Shtërpçë/Štrpce	€ 0.00	€ 0.00	€ 0.00	€ 0.00	€ 0.00	€ 0.00	€ 0.00	€ 0.00
R5	R. OF FERIZAJ/UROŠEVAC	€ 948,343.10	€ 350,543.62	€ 206,753.27	€ 1,505,639.99	€ 815,689.71	€ 102,072.29	€ 82,622.98	€ 1,328,877.52
29	Gjilan/Gnjilane	€ 676,370.00	€ 301,011.24	€ 73,270.04	€ 1,050,651.28	€ 611,464.01	€ 184,686.82	€ 74,584.30	€ 870,735.13
30	Kamenicë/Kamenica	€ 150,269.15	€ 40,880.69	€ 18,119.78	€ 209,269.62	€ 135,444.64	€ 42,486.53	€ 18,319.08	€ 196,250.25
31	Viti/Vitina	€ 201,900.00	€ 43,354.25	€ 26,220.29	€ 271,474.54	€ 167,538.79	€ 44,290.06	€ 24,400.18	€ 236,229.03
32	Novobërdë/Novo Brdo	€ 64,089.00	€ 20,930.00	€ 0.00	€ 85,019.00	€ 58,579.00	€ 26,026.00	€ 0.00	€ 84,605.00
RWC Ekohigjiena		€ 1,092,628.15	€ 406,176.18	€ 117,610.11	€ 1,616,414.44	€ 973,026.44	€ 297,489.41	€ 117,303.56	€ 1,387,819.41
33	Partesh/Parteš	€ 0.00	€ 0.00	€ 0.00	€ 0.00	€ 0.00	€ 0.00	€ 0.00	€ 0.00
34	Kllokot/Klokot	€ 0.00	€ 0.00	€ 0.00	€ 0.00	€ 0.00	€ 0.00	€ 0.00	€ 0.00
35	Ranillug/Ranilug	€ 0.00	€ 0.00	€ 0.00	€ 0.00	€ 0.00	€ 0.00	€ 0.00	€ 0.00
R6	R. OF GJILAN/GNJILANE	€ 1,092,628.15	€ 406,176.18	€ 117,610.11	€ 1,616,414.44	€ 973,026.44	€ 297,489.41	€ 117,303.56	€ 1,387,819.41
36	Gjakova/Đakovica	€ 608,104.00	€ 209,644.00	€ 78,223.00	€ 895,971.00	€ 565,127.00	€ 194,524.00	€ 85,754.00	€ 845,405.00
RWC CABRATI		€ 608,104.00	€ 209,644.00	€ 78,223.00	€ 895,971.00	€ 565,127.00	€ 194,524.00	€ 85,754.00	€ 845,405.00
37	Deçan/Deçani	€ 98,709.00	€ 59,192.64	€ 49,121.38	€ 207,023.02	€ 77,101.00	€ 41,914.02	€ 43,967.00	€ 162,982.02
38	Junik	€ 43,350.00	€ 17,870.40	€ 7,860.00	€ 69,080.40	€ 34,680.00	€ 16,976.88	€ 7,860.00	€ 59,516.88

R7	R. OF GJAKOVË/ĐAKOVICA	€ 750,163.00	€ 286,707.04	€ 135,204.38	€ 1,172,074.42	€ 676,908.00	€ 253,414.90	€ 137,581.00	€ 1,067,903.90
KOSOVO		€ 12,460,866.5	€ 2,898,704.1	€ 2,663,404.2	€ 18,022,974.9	€ 11,692,796.9	€ 2,290,945.2	€ 1,915,629.8	€ 16,227,864.5

Fee collection rate for waste collection service in 2019 (€)					
	Municipalities RWC region REGION	Household service fee collection rate (2019)	Business service fee collection rate (2019)	Institution service fee collection rate (2019)	Service fee collection rate for all categories (2019)
1	Pristina	113.75%	91.26%	27.19%	90.54%
2	Gllgoc/Glogovac	98.43%	89.61%	106.41%	97.71%
3	Fushë Kosovë/Kosovo Polje	93.49%	64.90%	168.14%	93.03%
4	Gračanicë/Gračanica	61.31%	53.18%	2.79%	59.26%
5	Lipjan/Lipljan	89.13%	52.93%	296.96%	85.88%
6	Obiliq/Obilić	101.33%	92.72%	200.90%	127.83%
7	Podujevë/Podujevo	87.50%	85.46%	173.80%	92.89%
RWC Pastrimi		104.08%	85.98%	44.69%	91.80%
R1	PRISTINA REGION	104.08%	85.98%	44.69%	91.80%
8	Mitrovicë/Mitrovica	62.40%	88.93%	91.58%	79.11%
9	Skenderaj/Srbica	61.89%	86.99%	124.44%	77.65%
10	Vushtrri/Vučitrn	67.00%	87.37%	85.55%	72.34%
RWC Uniteti		64.44%	88.33%	92.04%	76.62%
11	North Mitrovicë/a*				
12	Zvečan/Zvečan	0.00%	0.00%	0.00%	0.00%
13	Zubin Potok	0.00%	0.00%	0.00%	0.00%
14	Leposaviq/Leposavić*				
R2	MITROVICË/A REGION	64.44%	88.33%	92.04%	76.62%
15	Peja/Peć	102.73%	84.70%	134.42%	101.05%
16	Istog/Istok	105.45%	100.85%	99.74%	103.63%

17	Klinë/Klina	64.82%	126.48%	166.68%	84.06%
RWC Ambienti		95.63%	92.11%	129.13%	98.48%
R3	PEJA/PEĆ REGION	95.63%	92.11%	129.13%	98.48%
18	Prizren	100.00%	0.00%	0.00%	100.00%
19	Suharekë/Suva Reka	101.27%	96.08%	127.26%	101.62%
20	Malishevë/Mališevo	84.78%	84.54%	50.93%	80.88%
21	Rahovec/Orahovac	91.11%	86.87%	749.28%	93.76%
22	Dragash/Dragaš	0.00%	0.00%	0.00%	0.00%
RWC Ekoregjioni		96.93%	88.75%	92.57%	95.96%
23	Mamushë/Mamuša	0.00%	0.00%	0.00%	0.00%
R4	PRIZREN REGION	96.19%	88.75%	92.57%	95.33%
24	Ferizaj/Uroševac	83.04%	84.73%	105.70%	86.56%
25	Kaçanik/Kaçanik	91.10%	69.12%	120.30%	92.23%
26	Shtime/Štimlje	95.89%	101.96%	127.88%	101.85%
RWC Pastërtia		85.74%	28.49%	36.85%	89.15%
27	Han i Elezit/Elez Han	89.59%	36.56%	96.31%	76.59%
28	Shtërpçë/Štrpce	0.00%	0.00%	0.00%	0.00%
R5	FERIZAJ/UROŠEVAC REGION	86.01%	29.12%	39.96%	88.26%
29	Gjilan/Gnjilane	90.40%	61.36%	101.79%	82.88%
30	Kamenicë/Kamenica	90.13%	103.93%	101.10%	93.78%
31	Viti/Vitina	82.98%	102.16%	93.06%	87.02%
32	Novobërdë/Novo Brdo	91.40%	124.35%	0.00%	99.51%
RWC Ekohigjiena		89.05%	73.24%	99.74%	85.86%
33	Partesh/Parteš	0.00%	0.00%	0.00%	0.00%
34	Kllokot/Klokot	0.00%	0.00%	0.00%	0.00%
35	Ranillug/Ranilug	0.00%	0.00%	0.00%	0.00%
R6	GJILAN/GNJILANE REGION	89.05%	73.24%	99.74%	85.86%
36	Gjakova/Đakovica	92.93%	92.79%	109.63%	94.36%

RWC CABRATI		92.93%	92.79%	109.63%	94.36%
37	Deçan/Deçani	78.11%	70.81%	89.51%	78.73%
38	Junik	80.00%	95.00%	100.00%	86.16%
R7	GJAKOVA/ĐAKOVICA REGION	90.23%	88.39%	101.76%	91.11%
KOSOVO		93.84%	79.03%	71.92%	90.04%

* The municipality has not submitted the report to KEPA for the reporting year of 2019;

- The data reported by the municipality were not verified by the operator during the verification process, so they were not included in the calculation;
- Fee collection rate for waste management services is over 100%, because the collected amount includes old customer debts;
- In general, the data reported by municipalities have changed, based on the findings of the verification process. In future reports, municipalities need to address the findings during the verification, otherwise the process will not be recorded as completed;
- Billing and fee collection data for customers have somewhere smaller and elsewhere bigger discrepancies between the Municipality and the Operator, so, the data proved by the operator were taken as reference in the process.
- In some cases, the operator evidence does not include billing of households, businesses and institutions, which impedes verification. Therefore, this process remains unfinished by the municipality.

Annex 4. Illegal dumpsites in 2019/2020

	Municipalities RWC Region REGION	Illegal dumpsites by size			Illegal dumpsites by fraction					Total Illegal dumpsites
		Small dumpsites (1-5 waste bags of 200 litres)	Medium dumpsites (6-20 waste bags of 200 l)	Large dumpsites (> 20 waste bags of 200 litres)	Municipal waste	Construction and demolition waste	Indust. and hazardous waste	Bulky waste	Other waste	
1	Pristina	0	6	14	0.00%	55.00%	0.00%	0.00%	45.00%	20
2	Glogoc/Glogovac	11	9	11	26.00%	32.00%	0.00%	0.00%	42.00%	31
3	Fushë Kosovë/Kosovo Polje	3	6	6	7.00%	86.00%	0.00%	0.00%	7.00%	15
4	Gračanicë/Gračanica	6	5	28	51.00%	46.00%	0.00%	3.00%	0.00%	39
5	Lipjan/Lipljan	42	36	81	35.00%	18.00%	0.00%	1.00%	46.00%	159
6	Obiliq/Obilić	5	6	29	37.00%	7.00%	0.00%	0.00%	56.00%	40
7	Podujevë/Podujevo	5	4	0	33.00%	44.00%	0.00%	0.00%	23.00%	9
RWC Pastrimi		72	72	169	27.0%	41.1%	0.0%	0.6%	31.3%	313
R1	R. OF PRISHTINË/PRIŠTINA	72	72	169	27.0%	41.1%	0.0%	0.6%	31.3%	313
8	Mitrovicë/a	6	13	8	15.00%	33.00%	0.00%	0.00%	52.00%	27
9	Skenderaj/Srbica	2	8	7	18.00%	12.00%	0.00%	0.00%	70.00%	17
10	Vushtrri/Vučitrn	4	4	3	27.00%	64.00%	0.00%	0.00%	9.00%	11
RWC Uniteti		12	25	18	20.0%	36.3%	0.0%	0.0%	43.7%	55
11	North Mitrovicë/a	3	7	6	44.00%	25.00%	6.00%	6.00%	19.00%	16
12	Zveçan/Zvečan	11	13	15	23.00%	28.00%	0.00%	0.00%	49.00%	39
13	Zubin Potok	23	0	0	96.00%	4.00%	0.00%	0.00%	0.00%	23
14	Leposaviq/Leposavić	35	39	15	49.00%	4.00%	0.00%	1.00%	46.00%	89
R2	R. OF MITROVICË/MITROVICA	84	84	54	46.4%	19.5%	1.2%	1.4%	31.5%	222
15	Peja/Peć	43	20	10	41.00%	5.00%	1.00%	0.00%	53.00%	73
16	Istog/Istok	10	9	3	55.00%	18.00%	0.00%	0.00%	27.00%	22
17	Klinë/Klina	11	19	16	43.00%	35.00%	0.00%	0.00%	22.00%	46
RWC Ambienti		64	48	29	46.3%	19.3%	0.3%	0.0%	34.0%	141
R3	R. OF PEJË/PEĆ	64	48	29	46.3%	19.3%	0.3%	0.0%	34.0%	141
18	Prizren	0	5	32	3.00%	19.00%	3.00%	0.00%	75.00%	37
19	Suharekë/Suva Reka	26	15	46	29.00%	71.00%	0.00%	0.00%	0.00%	87
20	Malishevë/Mališevo	4	12	82	2.00%	46.00%	1.00%	0.00%	51.00%	98
21	Rahovec/Orahovac	11	6	3	30.00%	20.00%	0.00%	0.00%	50.00%	20

22	Dragash/Dragaš	13	17	15	18.00%	44.00%	0.00%	0.00%	38.00%	45
RWC Ekoregjioni		54	55	178	16.4%	40.0%	0.8%	0.0%	42.8%	287
23	Mamushë/Mamuša	2	5	4	0.00%	27.00%	0.00%	0.00%	73.00%	11
R4	R. OF PRIZREN	56	60	182	8.2%	33.5%	0.4%	0.0%	57.9%	298
24	Ferizaj/Uroševac	3	10	19	6.00%	34.00%	0.00%	4.00%	56.00%	32
25	Kaçanik/Kaçanik	2	7	10	26.00%	32.00%	0.00%	0.00%	42.00%	19
26	Shtime/Štimlje	7	12	12	19.00%	26.00%	0.00%	0.00%	55.00%	31
RWC Pastrimi		12	29	41	17.0%	30.7%	0.0%	1.3%	51.0%	82
27	Han i Elezit/Elez Han	0	0	2	0.00%	50.00%	0.00%	0.00%	50.00%	2
28	Shtërpçë/Štrpce	27	8	8	65.00%	31.00%	0.00%	2.00%	2.00%	43
R5	R. OF FERIZAJ/UROŠEVAC	39	37	51	27.3%	37.2%	0.0%	1.1%	34.3%	127
29	Gjilan/Gnjilane	12	26	27	29.00%	32.00%	0.00%	0.00%	39.00%	65
30	Kamenicë/Kamenica	9	9	11	52.00%	7.00%	0.00%	0.00%	41.00%	29
31	Viti/Vitina	4	5	12	19.00%	43.00%	0.00%	14.00%	24.00%	21
32	Novobërdë/Novo Brdo	14	38	24	49.00%	14.00%	0.00%	0.00%	37.00%	76
RWC Ekohigjiena		39	78	74	37.3%	24.0%	0.0%	3.5%	35.3%	191
33	Partesh/Parteš	30	30	16	39.00%	17.00%	0.00%	0.00%	44.00%	76
34	Klllokot/Klokot	3	8	3	14.00%	36.00%	0.00%	0.00%	50.00%	14
35	Ranillug/Ranilug	12	14	18	25.00%	20.00%	0.00%	0.00%	55.00%	44
R6	R. OF GJILAN/GNJILANE	84	130	111	28.8%	24.3%	0.0%	0.9%	46.1%	325
36	Gjakova/Đakovica	8	7	27	10.00%	3.00%	0.00%	0.00%	87.00%	42
RWC CABRATI		8	7	27	10.0%	3.0%	0.0%	0.0%	87.0%	42
37	Deçan/Dečani	3	2	16	0.00%	52.00%	0.00%	0.00%	48.00%	21
38	Junik	0	0	0	0.00%	0.00%	0.00%	0.00%	0.00%	0
R7	R. OF GJAKOVË/ĐAKOVICA	11	9	43	3.3%	18.3%	0.0%	0.0%	45.0%	63
KOSOVO		410	440	639	27.2%	30.0%	0.3%	0.8%	39.0%	1489

* The municipality has not submitted the report to KEPA for the reporting year of 2019;

- The data presented were reported by municipalities based on the field registration in June 2020;
- However, the reported data have undergone a verification process.

Annex 5. Access to infrastructure for municipal waste separation at source in 2019

	Municipalities RWC region REGION	General information		Access to infrastructure for waste separation at source	
		Population (KAS-2011)	Number of households (KAS-2011)	Number of households with access to infrastructure for separation at source (2019)	Percentage of households have access to with access to infrastructure for separation at sour (2019)
1	Pristina	198,897.00	40,528.00	0	0.0%
2	Glogoc/Glogovac	58,531.00	8,786.00	1.859	21.2%
3	Fushë Kosovë/Kosovo Polje	34,827.00	6,580.00	2.220	33.7%
4	Graçanicë/Gračanica	10,675.00	2,421.00	0	0.0%
5	Lipjan/Lipljan	57,605.00	9,497.00	0	0.0%
6	Obiliq/Obilić	21,549.00	3,852.00	0	0.0%
7	Podujevë/Podujevo	88,499.00	13,440.00	0	0.0%
RWC Pastrimi		470,583.00	85,104.00	4.079	4.8%
R1	PRISTINA REGION	470,583.00	85,104.00	4.079	4.8%
8	Mitrovicë/Mitrovica	71,909.00	13,173.00	210	1.6%
9	Skenderaj/Srbica	50,858.00	7,682.00	0	0.0%
10	Vushtrri/Vučitrn	69,870.00	11,866.00	4.710	39.7%
RWC Uniteti		192,637.00	32,721.00	4.920	15.0%
11	North Mitrovicë/a*				0.0%
12	Zveçan/Zvečan	7,481.00	1,895.00	0.00	0.0%
13	Zubin Potok	0.00	0.00	0.00	0.0%
14	Leposaviq/Leposavić*				0.0%
R2	MITROVICË/A REGION	200,118.00	34,616.00	4.920	14.2%
15	Peja/Peć	96,450.00	17,682.00	0.00	0.0%
16	Istog/Istok	39,289.00	6,741.00	0.00	0.0%
17	Klinë/Klina	38,496.00	5,843.00	0.00	0.0%
RWC Ambienti		174,235.00	30,266.00	0	0.00
R3	PEJA/PEC REGION	174,235.00	30,266.00	0.00	0.0%
18	Prizren	177,781.00	29,625.00	600	2.0%
19	Suharekë/Suva Reka	59,722.00	9,145.00	0.00	0.0%
20	Malishevë/Mališevo	54,613.00	6,879.00	0.00	0.0%
21	Rahovec/Orahovac	56,208.00	8,221.00	260	3.2%
22	Dragash/Dragaš	33,997.00	6,215.00	0.00	0.0%
RWC Ekoregjioni		382,321.00	60,085.00	860	5.2%

23	Mamushë/Mamuša	5,507.00	566.00	0.00	0.0%
R4	PRIZREN REGION	387,828.00	60,651.00	860	5.2%
24	Ferizaj/Uroševac	108,610.00	18,359.00	0.00	0.0%
25	Kaçanik/Kaçanik	33,409.00	5,547.00	0.00	0.0%
26	Shtime/Štimlje	27,324.00	4,158.00	0.00	0.0%
	RWC Pastrimi	169,343.00	28,064.00	0	0.00
27	Han i Elezit/Elez Han	9,403.00	1,452.00	0.00	0.0%
28	Shtërpçë/Štrpce	6,949.00	1,485.00	0.00	0.0%
R5	FERIZAJ/UROŠEVAC REGION	185,695.00	31,001.00	0.00	0.0%
29	Gjilan/Gnjilane	90,178.00	17,115.00	0.00	0.0%
30	Kamenica	36,085.00	6,419.00	0.00	0.0%
31	Viti/Vitina	46,987.00	7,520.00	0.00	0.0%
32	Novobërdë/Novo Brdo	6,729.00	1,449.00	0.00	0.0%
	RWC Ekohigjiena	179,979.00	32,503.00	0	0.00
33	Partesh/Parteš	1,787.00	418.00	0.00	0.0%
34	Klllokot/Klokot	2,556.00	510.00	0.00	0.0%
35	Ranillug/Ranilug	3,866.00	956.00	0.00	0.0%
R6	GJILAN/GNJILANE REGION	188,188.00	34,387.00	0.00	0.0%
36	Gjakova/Đakovica	94,556.00	16,303.00	295	1.8%
	RWC CABRATI	94,556.00	16,303.00	295	1.8%
37	Deçan/Deçani	40,019.00	5,887.00	0.00	0.0%
38	Junik	6,084.00	770.00	0.00	0.0%
R7	GJAKOVA/ĐAKOVICA REGION	140,659.00	22,960.00	295	1.8%
KOSOVO		1,747,306.00	298,985.00	10,154.00	3.4%

* The municipality has not submitted the report to KEPA for the reporting year of 2019;

- This annex presented the data on municipal waste separation at source. Only some municipalities, such as: Fushë Kosovë/Kosovo Polje, Drenas/Glogovac, Gjakovë/Đakovica, Vushtrri/Vučitrn, Mitrovicë/Mitrovica, Prizren and Rahovec/Orahovac, have reported on this type of activity;
- The data reported by these municipalities were verified during the verification process based on relevant documents.

Annex 6. (1) Compliance with waste management legal and planning framework

	Municipalities RWC Region REGION	1.Drafting and adoption of MWMP	2. Development and adoption of Municipal Regulation on Waste Management	3. WM Officer	4. Environmental Inspector	6. Contracting licensed operators for municipal waste collection and transport	6. Contracting licensed operators for C&D waste collection and transport
1	Pristina	1	1	1	0	1	0
2	Drenas/Glogovac	1	1	1	1	0	0
3	Fushë Kosovë/Kosovo Polje	1	1	1	0	0	0
4	Gračanicë/Gračanica	1	1	1	1	1	0
5	Lipjan/Lipljan	1	1	1	1	0	0
6	Obiliq/Obilić	1	1	1	1	1	0
7	Podujevë/Podujevo	1	1	1	1	1	0
	RWC Pastrimi	100%	100%	100%	71%	57%	0%
R1	R. OF PRISHTINË/PRIŠTINA	100%	100%	100%	71%	57%	0%
8	Mitrovicë/Mitrovica	1	1	1	1	1	0
9	Skenderaj/Srbica	1	1	1	1	1	0
10	Vushtrri/Vučitrn	1	1	1	1	1	0
	RWC Uniteti	100%	100%	100%	100%	100%	0%
11	North Mitrovicë/a*						
12	Zvečan/Zvečan	1	0	1	1	0	0
13	Zubin Potok	0	0	0	0	0	0
14	Leposaviq/Leposavić*						
R2	R. OF MITROVICË/MITROVICA	80%	60%	80%	80%	60%	0%
15	Peja/Peć	1	1	1	1	1	0
16	Istog/Istok	1	1	1	1	0	0
17	Klinë/Klina	1	1	1	1	0	0
	RWC Ambienti	100%	100%	100%	100%	33%	0%
R3	PEJA/PEĆ REGION	100%	100%	100%	100%	33%	0%
18	Prizren	1	1	1	1	1	0
19	Suharekë/Suva Reka	1	0	0	1	1	0
20	Malishevë/o	0	0	1	1	1	0
21	Rahovec/Orahovac	1	1	1	1	1	0

22	Dragash/Dragaš	0	1	1	1	0	0
RWC Ekoregjioni		60%	60%	80%	100%	80%	0%
23	Mamushë/Mamuša	0	0	0	1	1	0
R4	R. OF PRIZREN	50%	50%	67%	100%	83%	0%
24	Ferizaj/Uroševac	1	0	0	1	0	0
25	Kaçanik/Kaçanik	1	1	1	1	1	0
26	Shtime/Štimlje	1	1	1	1	1	0
RWC Pastrimi		100%	67%	67%	100%	67%	0%
27	Han i Elezit/Elez Han	1	1	1	1	1	0
28	Shtërpcë/Štrpce	0	0	0	0	0	0
R5	FERIZAJ/UROŠEVAC REGION	80%	60%	60%	80%	60%	0%
29	Gjilan/Gnjilane	1	1	0	1	1	0
30	Kamenicë/Kamenica	1	1	1	1	1	0
31	Viti/Vitina	0	0	1	1	1	0
32	Novobërdë/Novo Brdo	1	0	1	0	1	0
RWC Ekohigjiena		75%	50%	75%	75%	100%	0%
33	Partesh/Parteš	0	0	0	0	0	0
34	Klllokot/Klokot	1	1	0	0	0	0
35	Ranillug/Ranilug	1	0	0	1	0	0
R6	GJILAN/GNJILANE REGION	71%	43%	43%	57%	57%	0%
36	Gjakova/Đakovica	1	1	1	1	0	0
RWC Çabratë		100%	100%	100%	100%	0%	0%
37	Deçan/Deçani	1	1	1	1	1	0
38	Junik	1	1	1	1	1	0
R7	R. OF GJAKOVË/ĐAKOVICA	100%	100%	100%	100%	67%	0%
KOSOVO- No. of municipalities that have implemented the process		29	25	27	29	22	0
KOSOVO-process implementation average		80.6%	69.4%	75.0%	80.6%	61.1%	0.0%

Annex 6. (2) Compliance with waste management legal and planning framework

	Municipalities RWC Region REGION	7. Setting service fees by going through the fee process	8. Designation of a facility for the collection, treatment and disposal of waste from the construction and demolition of buildings.	9. Organizational structure reflects the inspectorate in the municipality	10. The municipality has reported on mandatory fines imposed during the reporting year	Number of processes implemented by municipality and % of implementation by region
1	Pristina	1	1	1	1	8
2	Drenas/Glogovac	1	1	1	1	8
3	Fushë Kosovë/Kosovo Polje	1	0	1	0	5
4	Graçanicë/Gračanica	1	1	1	1	9
5	Lipjan/Lipljan	1	1	1	1	8
6	Obiliq/Obilić	1	0	1	1	8
7	Podujevë/Podujevo	1	1	1	0	8
RWC Pastrimi		100%	71%	100%	71%	77%
R1	PRISTINA REGION	100%	71%	100%	71%	77%
8	Mitrovicë/a	1	1	1	1	9
9	Skenderaj/Srbica	1	1	1	1	9
10	Vushtrri/Vučitrn	1	1	1	1	9
RWC Uniteti		100%	100%	100%	100%	90%
11	North Mitrovicë/a*					
12	Zveçan/Zvečan	1	0	1	0	5
13	Zubin Potok	1	0	0	0	1
14	Leposaviq/Leposavić*					
R2	MITROVICË/A REGION	100%	60%	80%	60%	66%
15	Peja/Peć	1	1	1	1	9
16	Istog/Istok	1	0	1	1	7
17	Klinë/Klina	1	0	1	0	6
RWC Ambienti		100%	33%	100%	67%	73%
R3	PEJA/PEĆ REGION	100%	33%	100%	67%	73%
18	Prizren	1	1	1	1	9
19	Suharekë/Suva Reka	0	1	1	0	5

20	Malishevë/Mališevo	0	1	1	0	5
21	Rahovec/Orahovac	0	1	1	1	8
22	Dragash/Dragaš	0	0	1	1	5
RWC Ekoregjioni		20%	80%	100%	60%	64%
23	Mamushë/Mamuša	0	0	1	0	3
R4	PRIZREN REGION	17%	67%	100%	50%	58%
24	Ferizaj/Uroševac	1	1	1	1	6
25	Kaçanik/Kaçanik	1	1	1	1	9
26	Shtime/Štimlje	1	1	1	1	9
RWC Pastrimi		100%	100%	100%	100%	80%
27	Han i Elezit/Elez Han	1	1	1	1	9
28	Shtërpcë/Štrpce	0	0	0	0	0
R5	FERIZAJ/UROŠEVAC REGION	80%	80%	80%	80%	66%
29	Gjilan/Gnjilane	0	1	1	1	7
30	Kamenicë/Kamenica	0	1	1	1	8
31	Viti/Vitina	0	1	1	1	6
32	Novobërdë/Novo Brdo	0	0	1	0	4
RWC Ekohigjiena		0%	75%	100%	75%	63%
33	Partesh/Parteš	0	0	1	0	1
34	Klllokot/Klokot	0	0	0	0	2
35	Ranillug/Ranilug	0	0	0	0	2
R6	GJILAN/GNJILANE REGION	0%	43%	71%	43%	43%
36	Gjakova/Đakovica	1	1	1	1	8
RWC Çabrati		100%	100%	33%	33%	67%
37	Deçan/Dečani	1	1	1	1	9
38	Junik	0	1	1	0	7
R7	GJAKOVA/ĐAKOVICA REGION	67%	100%	100%	67%	80%
KOSOVO- No. of municipalities that have implemented the process		22	23	32	22	23.1
KOSOVO-process implementation average		61.1%	63.9%	88.9%	61.1%	64.2%

- * The municipality has not submitted the report to KEPA for the reporting year of 2019;
- 0 The process was implemented;
- 1 The process was not implemented;
- 2 Process 6. Contracting licensed operators for C&D waste collection and transport has 0 implementation rate, because there are still no licensed operators for this activity in Kosovo. Some municipalities have taken steps in this regard, but since the companies are not licensed, the requirement was registered as not met;
 - Some municipalities have reported draft documents on certain processes such as MWMPs or MWMRs, which were not registered as completed processes;
 - For some processes such as: the appointment of the municipal waste management officer and the environmental inspector, the municipalities have stated that they have implemented these processes according to reporting requirements, but this was not corroborated with adequate documentation.
 - In general, the municipalities have reported on the implementation of processes according to the reporting requirements, but deviations and inconsistencies between the documentation submitted and the reporting requirements were found during the verification of reports.